

NOTE (METRIC CONVERSIONS)

PLOTTED G.S.

PLAN OF SUBDIVISION OF  
PART OF N.W. 1/4 OF  
DISTRICT LOT 4046  
CARIBOO DISTRICT-BRITISH COLUMBIA

21748

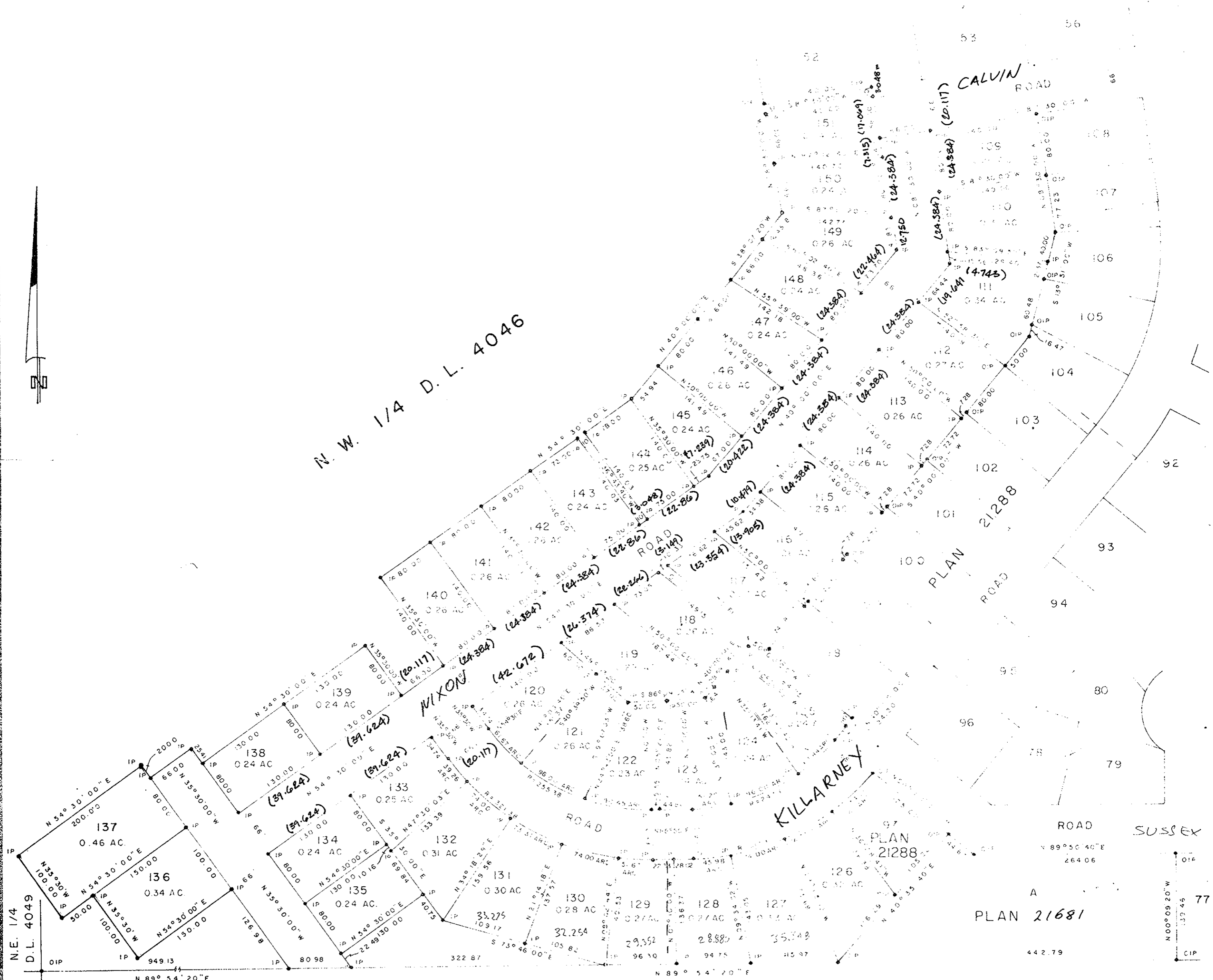
SCALE: 1" = 100'

16 OCT. 74

NOTE: Bearings are astronomic, derived from the south boundary  
of N.W. 1/4 D.L. 4046 as shown on Plan 21288.

LEGEND: •OIP denotes an old iron pin found.  
•IP denotes an iron pin set.

E.T. SCHOOLEY  
for R.S.



S. W. 1/4 D. L. 4046

I, DONALD A. DUFFY, of the City of Vancouver, a British Columbia Land Surveyor, hereby certify that I was present at and approved the survey represented by this plan and plan are correct and true to the original on the 16th day of June 1974.

Mortgagee  
CAINE HOLDINGS LTD.

Sworn before me this  
day of 22.7.74 1974

NORCAN DEVELOPMENTS LTD.

A Commissioner for Taking Affidavits  
for British Columbia