

CITY of PRINCE GEORGE  
 EXPLANATORY PLAN of RIGHT of WAY  
 THROUGH THAT PORTION of CLOSED 1st. AVENUE  
 ADJOINING THE NORTH BOUNDARY BLOCK W, PLAN B 3783  
 AS SHOWN ON BY LAW PLAN 19486, D.L. 343  
 CARIBOO DISTRICT

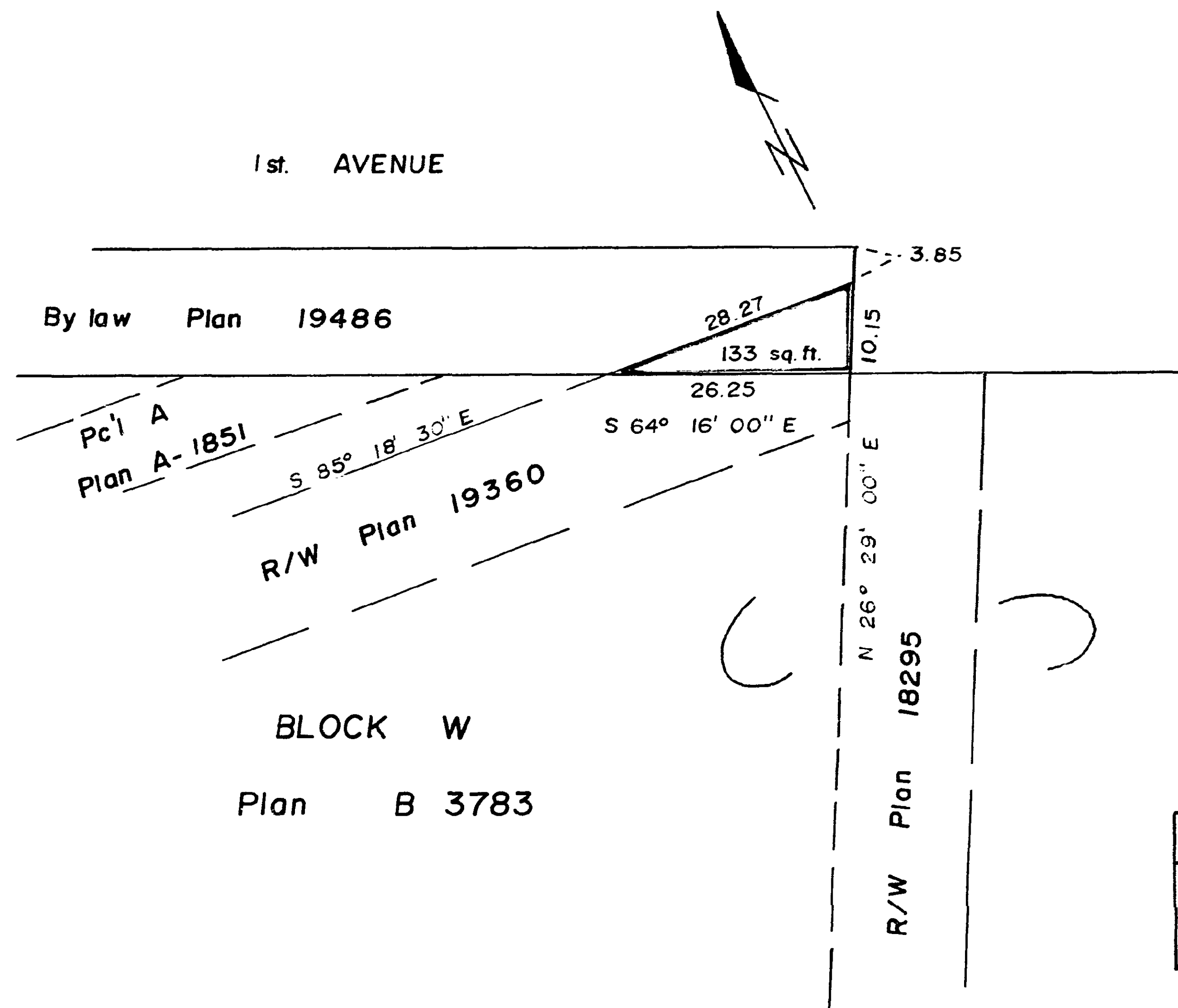
Scale: 1" = 20'

PLAN NO. 21 727

Deposited in the Land Registry Office at  
 Prince George this 30 day of SEPTEMBER 1974.

E.T. SCHOOLEY

Per: ES



CERTIFIED CORRECT ACCORDING TO LAND REGISTRY  
 OFFICE RECORDS THIS 17 DAY OF SEPTEMBER 1974

V. Bartell  
 V. Bartell, B.C.L.S.

BOOK OF REFERENCE	
DESCRIPTION	AREA
Closed 1st. Ave - Plan 19486	133 sq. ft.

THIS PLAN LIES WITHIN  
 THE FRASER - FORT GEORGE  
 REGIONAL DISTRICT

McWILLIAM, WHYTE, GOBLE & ASSOCIATES  
 B. C. LAND SURVEYORS  
 PRINCE GEORGE - KAMLOOPS - SMITHERS

REF. NO.: 74100-19