

22042.015
020

PLAN OF SUBDIVISION OF PART OF
LOT 1, PLAN 20393
DISTRICT LOT 2422
CARIBOO DISTRICT - BRITISH COLUMBIA

SCALE: 1" = 200'

NOTE: Bearings are astronomic, derived from the west boundary of Lot 1, as shown on Plan 20393.

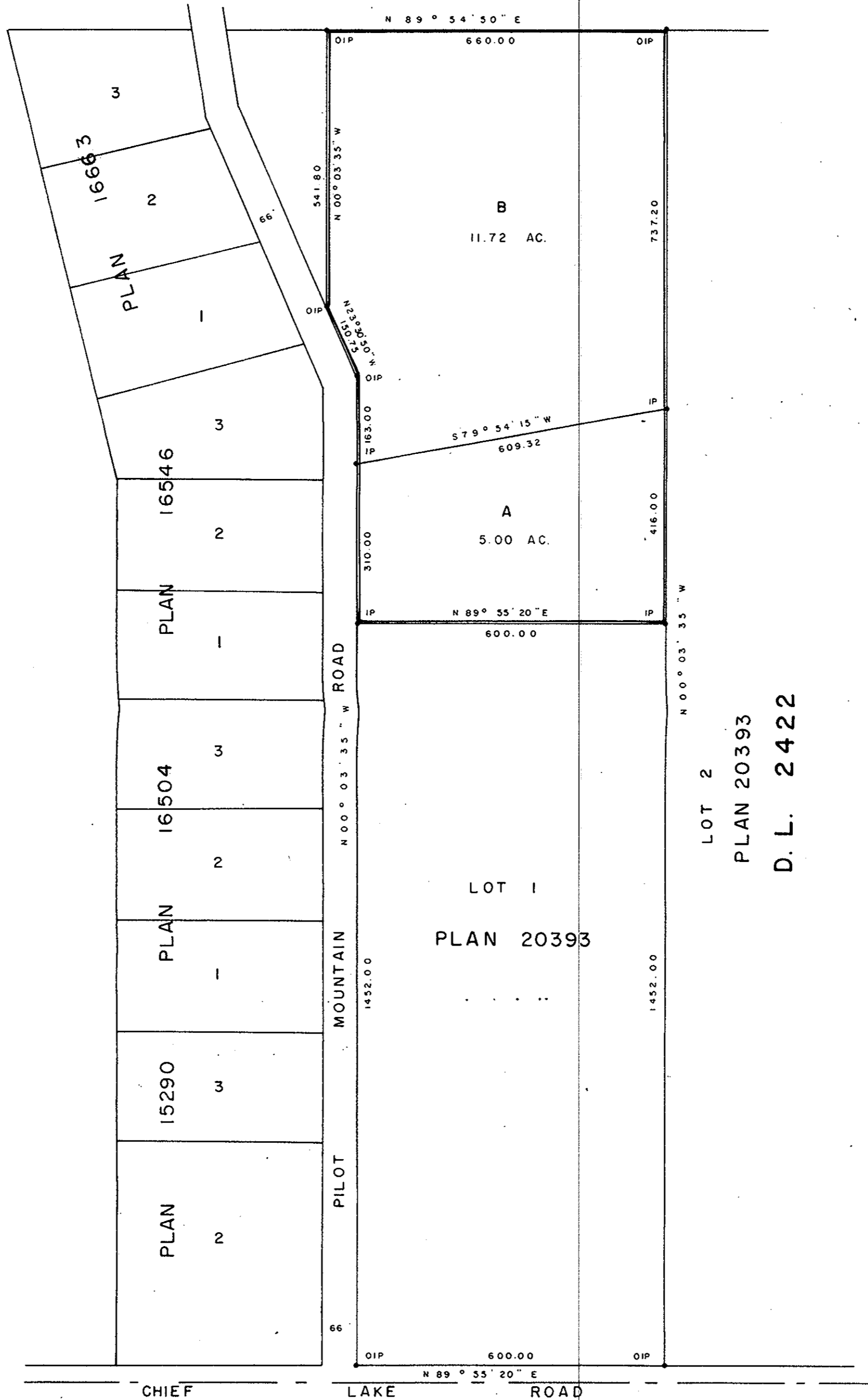
LEGEND: • OIP denotes an old iron pin found.
• IP denotes an iron pin set.

PLAN N° 21724

Deposited in the Land Registry Office at Prince George, B.C. this 26 day of September, 1974.

E.T. SCHOOLEY
Registrar

N. W. 1/4 D. L. 2422



RECEIVED
NOV 18 1974
PROVINCIAL ASSESSOR
PRINCE GEORGE, B. C.



I, DONALD A. DUFFY of the City of Prince George, a British Columbia Land Surveyor, make oath and say that I was present at and did personally superintend the survey represented by this plan and that the survey and plan are correct. The said survey was completed on the 20 day of JULY 1973

[Signature]
B.C.L.S.

Sworn before me this 16 day of JULY 1974

[Signature]
A Commissioner for taking Affidavits for British Columbia.

Owner *[Signature]*
Witness *[Signature]*

LOT 1 PLAN 20279
LOT 2 PLAN 20279
N. W. 1/4 D. L. 2423

Approved under the Land Registry Act this 12th day of September, 1974

[Signature]
Approving Officer, Dept. of Highways.

This plan lies within the Fraser-Fort George Regional District.