

PLAN of RIGHT of WAY  
in LOT A , PLAN 21708  
D.L. 1430 , CARIBOO DISTRICT

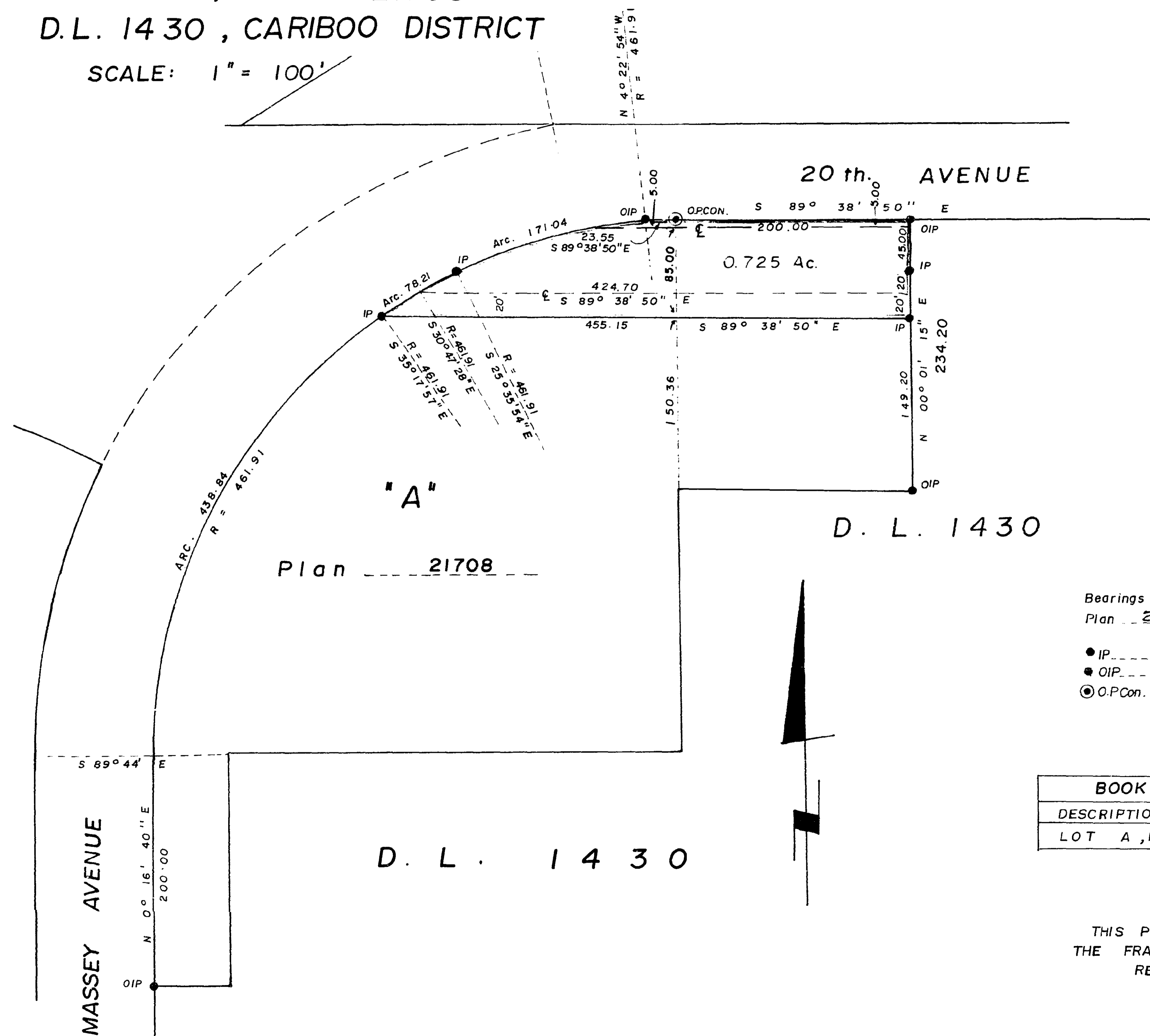
SCALE: 1" = 100'

PLAN NO. : 21 720

DEPOSITED IN THE LAND REGISTRY OFFICE  
AT PRINCE GEORGE THIS 24 DAY OF SEPTEMBER 1974

E. T. SCHOOLEY  
REGISTRAR

per: *ES*



Bearings are astronomic, derived from  
Plan 21708

- IP..... Standard Iron Post
- OIP..... Old Iron Post
- O.P.Con..... Old Concrete Post

I, V. BARTELL of the City of Prince George  
British Columbia Land Surveyor, make oath and  
say that I was present at and did personally  
superintend the survey represented by this  
plan and that the survey and plan are correct.  
The said survey was completed on  
the 16 day of September 1974

*V. Bartell*  
V. BARTELL, B. C. L. S.

Sworn before me at Prince George  
this 17 day of September 1974

*H. W. Lawson*  
A commissioner for taking affidavits  
for British Columbia

BOOK OF REFERENCE	
DESCRIPTION	AREA
LOT A, PLAN 21708	0.725 Ac

THIS PLAN LIES WITHIN  
THE FRASER FORT GEORGE  
REGIONAL DISTRICT.

Mc. WILLIAM - WHYTE - GOBLE & ASSOCIATES  
B.C. LAND SURVEYORS  
PRINCE GEORGE - KAMLOOPS - SMITHERS

REF. NO.: 74239 R/W