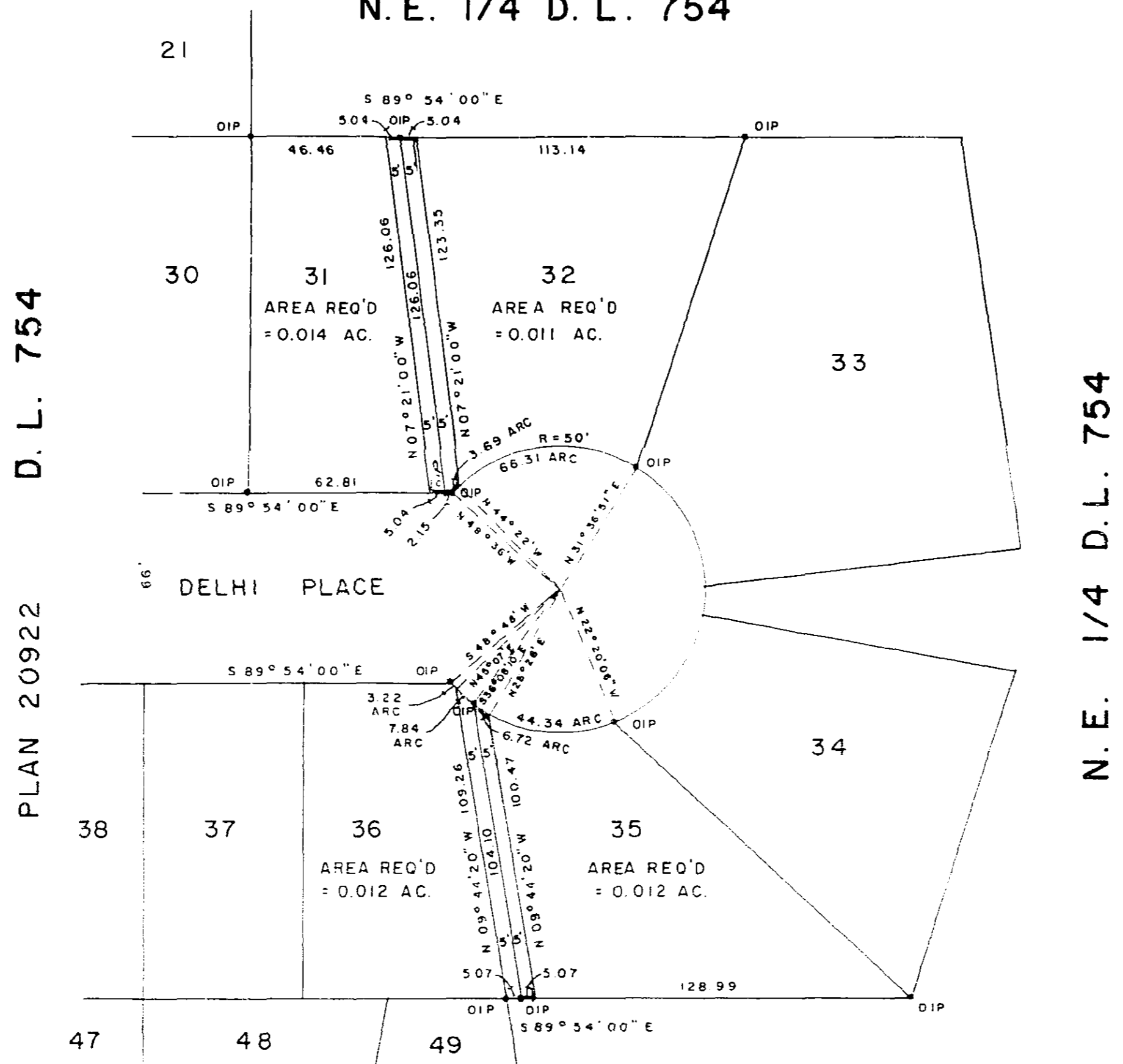


N. E. 1/4 D. L. 754



PLAN No 21 714

Deposited in the Land Registry Office at Prince George, B.C. this 19 day of SEPTEMBER, 1973

E. T. SCHOOLEY Registrar

not: *LS*

PLAN OF RIGHT-OF-WAY THROUGH DISTRICT LOT 754 CARIBOO DISTRICT - BRITISH COLUMBIA

SCALE: 1" = 50'

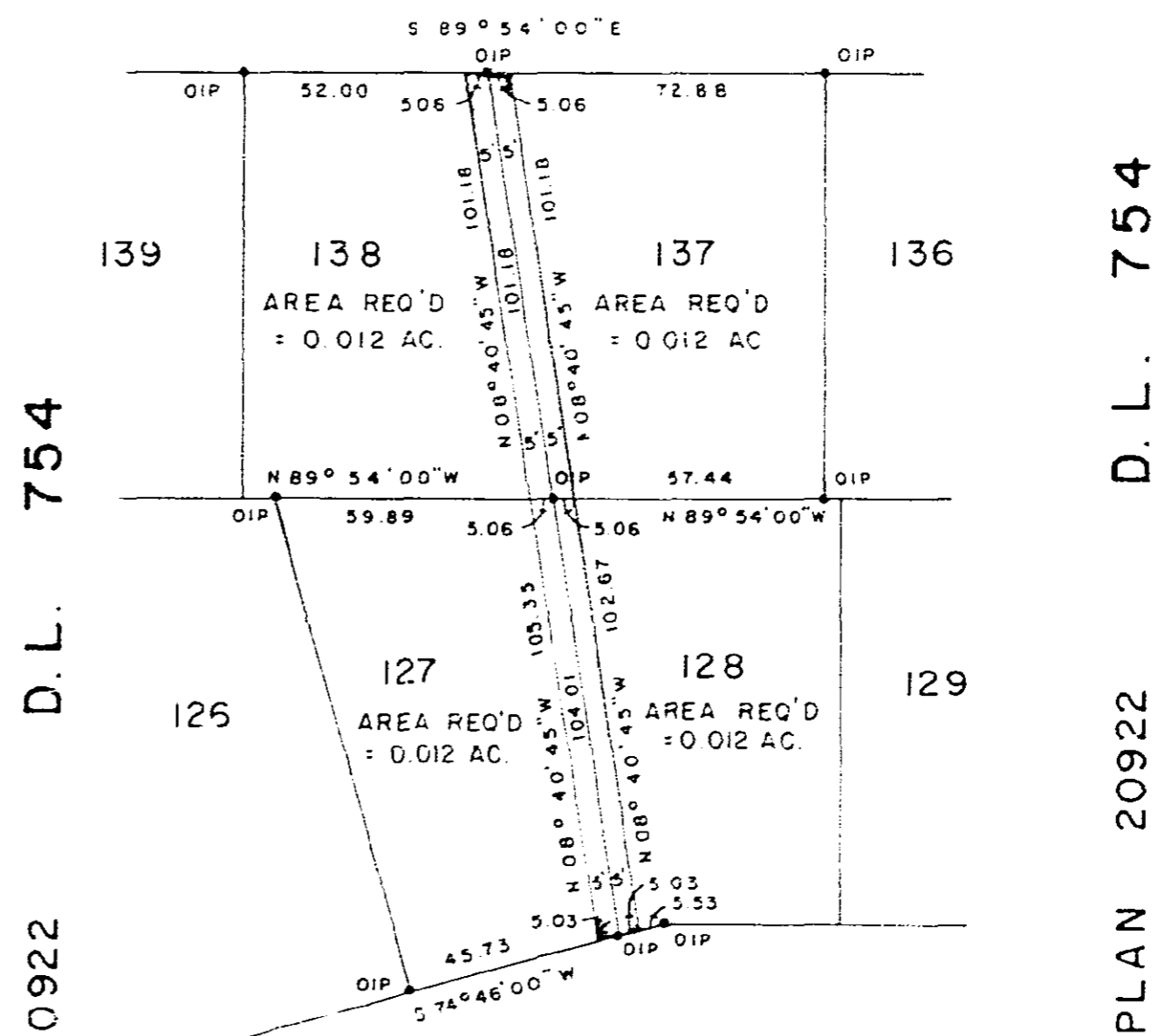
NOTE: Bearings are astronomic, derived from the East boundaries of Lots 31, 36, 138 & 104, Plan 20922.

LEGEND: •OIP denotes an old iron pin found.

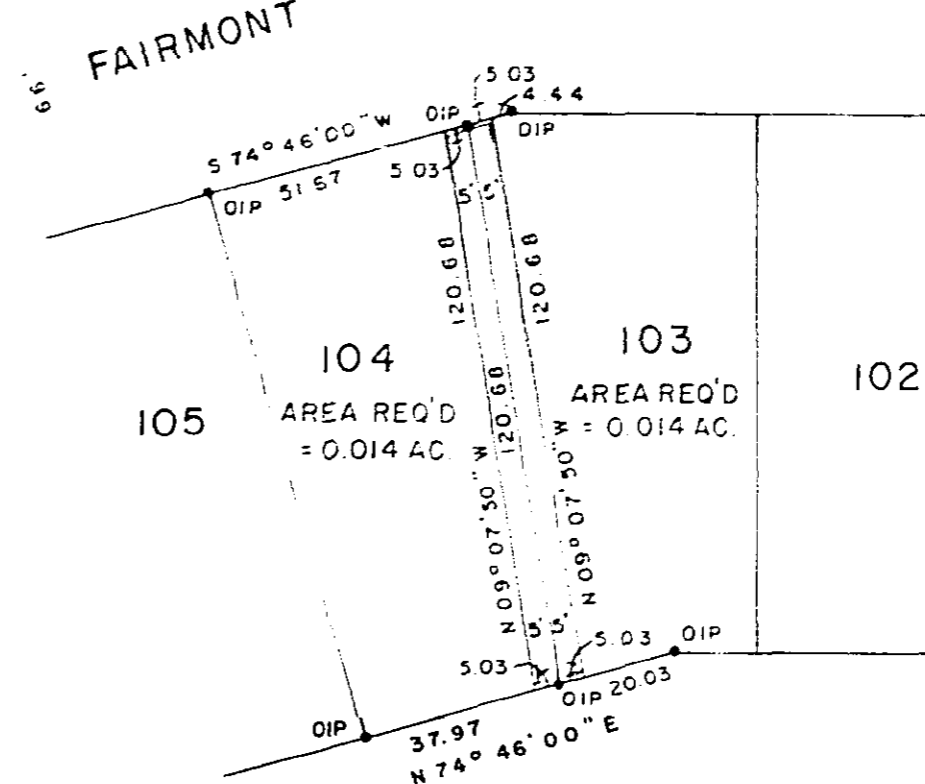
BOOK OF REFERENCE

PARCEL	AREA REQ'D
LOT 31, PLAN 20922, D.L. 754	0.014 AC.
LOT 32, PLAN 20922, D.L. 754	0.011 AC.
LOT 35, PLAN 20922, D.L. 754	0.012 AC.
LOT 36, PLAN 20922, D.L. 754	0.012 AC.
LOT 103, PLAN 20922, D.L. 754	0.014 AC.
LOT 104, PLAN 20922, D.L. 754	0.014 AC.
LOT 127, PLAN 20922, D.L. 754	0.012 AC.
LOT 128, PLAN 20922, D.L. 754	0.012 AC.
LOT 137, PLAN 20922, D.L. 754	0.012 AC.
LOT 138, PLAN 20922, D.L. 754	0.012 AC.

FAIRMONT CRESCENT



FAIRMONT CRESCENT



S. E. 1/4 D. L. 754

I, DONALD A. DUFFY of the City of Prince George, a British Columbia Land Surveyor, make oath and say that I was present at and did personally superintend the survey represented by this plan and that the survey and plan are correct. The said survey was completed on the 19 day of JUNE 1973

[Signature]
B.C.L.S.

Sworn before me this 20th day of JUNE, 1973

[Signature]
A Commissioner for taking Affidavits for British Columbia.

This plan lies within the Fraser-Fort George Regional District.

W. D. USHER & ASSOCIATES
LAND SURVEYORS
PRINCE GEORGE - B.C.