

PLAN OF RIGHT-OF-WAY THROUGH
LOTS 26 & 27, PLAN 19462
DISTRICT LOT 753
CARIBOO DISTRICT, BRITISH COLUMBIA

SCALE: 1" = 100'

NOTE: Bearings are astronomic, derived from the
Northeasterly boundary of Lot 27, Plan 19462.

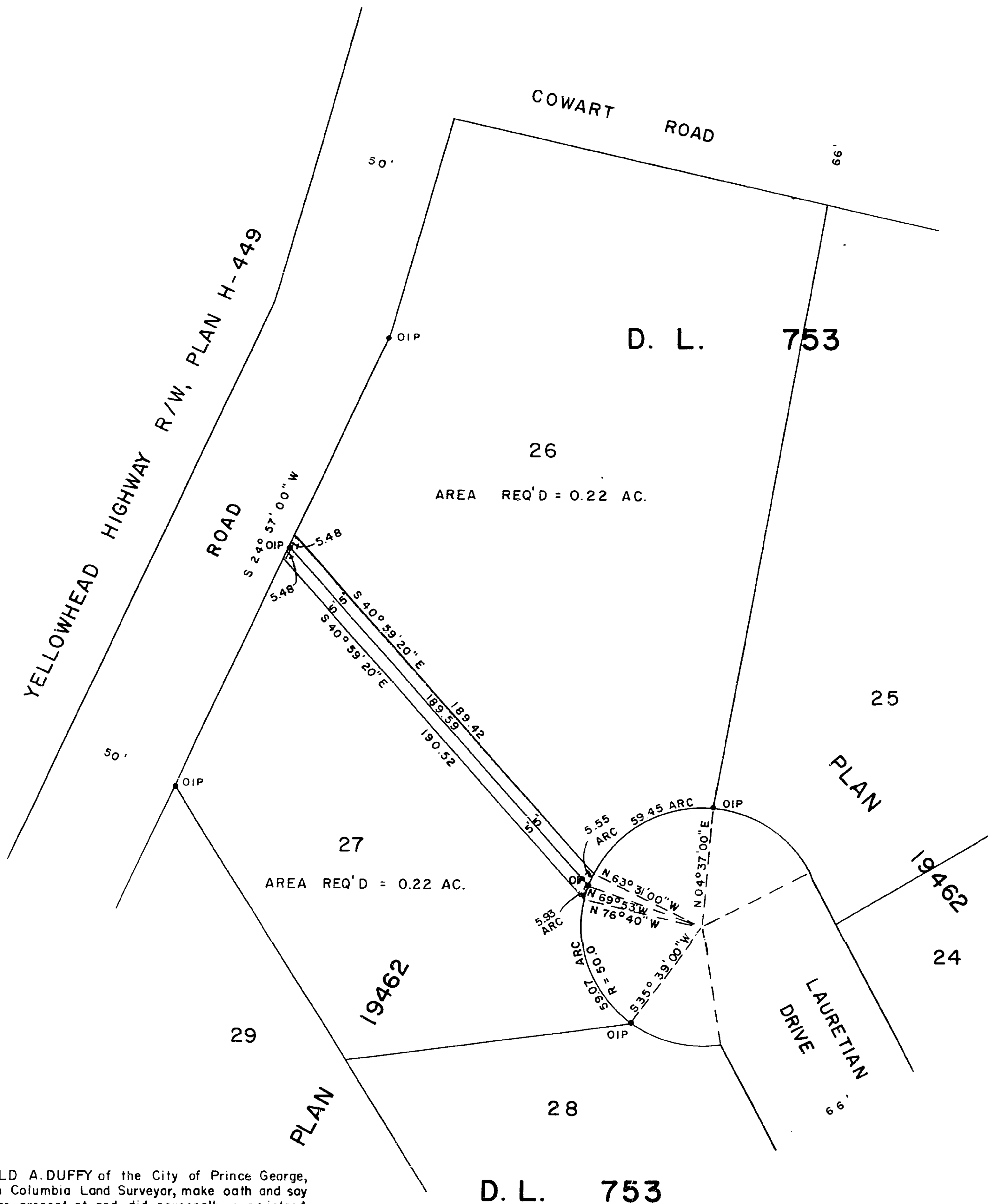
LEGEND: • OIP denotes an old iron pin found.

PLAN N^o 21 710

Deposited in the Land Registry
Office at Prince George, B.C. this
12. day of SEPTEMBER, 1974.

E. T. SCHOOLEY
Registrar

NOT: *[Signature]*



I, DONALD A. DUFFY of the City of Prince George,
a British Columbia Land Surveyor, make oath and say
that I was present at and did personally superintend
the survey represented by this plan and that the survey
and plan are correct. The said survey was completed
on the 19th day of MAY 1972.

[Signature of Donald A. Duffy]
B.C.L.S.

Sworn before me this 22nd
day of MAY, 1972.

[Signature]
A Commissioner for taking Affidavits
for British Columbia.

This plan lies within the Fraser-Fort George
Regional District.