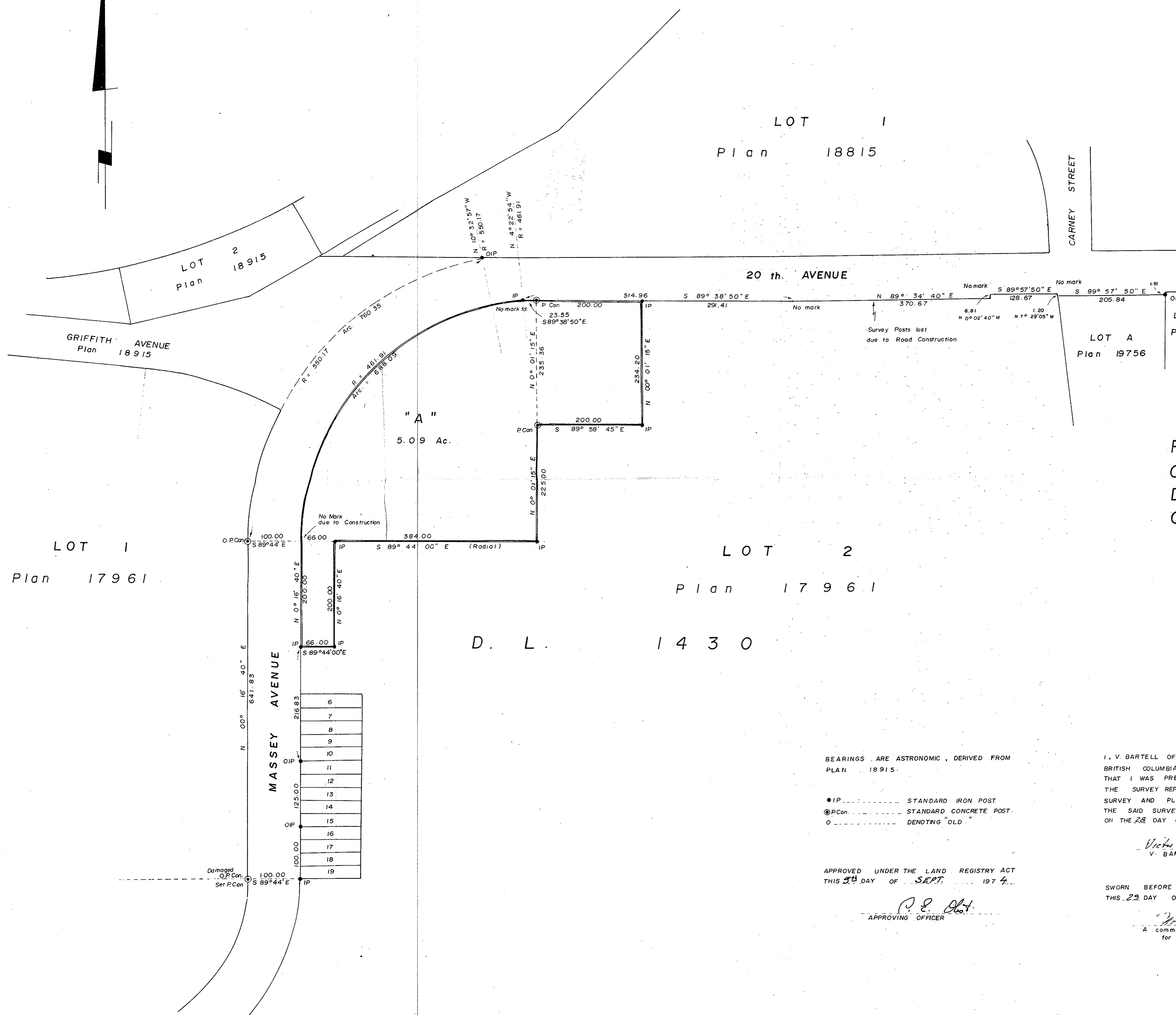


PLAN NO. 21708
 DEPOSITED IN THE LAND REGISTRY OFFICE
 AT PRINCE GEORGE THIS 14 DAY OF Sept 1974

D5791

"E. T. SCHOOLEY"
 REGISTRAR
 Copy sent to Records
 Dec 6/74
RECEIVED
 NOV 26 1974
 CITY ASSESSOR
 PRINCE GEORGE



PLAN OF SUBDIVISION
 OF PART OF LOT 2, PLAN 17961
 DISTRICT LOT 1430
 CARIBOO DISTRICT

SCALE: 1" = 100'

Mc WILLIAM - WHYTE - GOBLE & ASSOCIATES
 B. C. LAND SURVEYORS
 PRINCE GEORGE - KAMLOOPS - SMITHERS
 REF. NO.: 74 239