

RECEIVED

NOV 4 1974

CITY ASSESSOR
PRINCE GEORGE

PLAN No **21 687**

Deposited in the Land Registry
Office at Prince George, B.C. this
20 day of AUGUST, 1974.

E. T. SCHOOLEY
Registrar

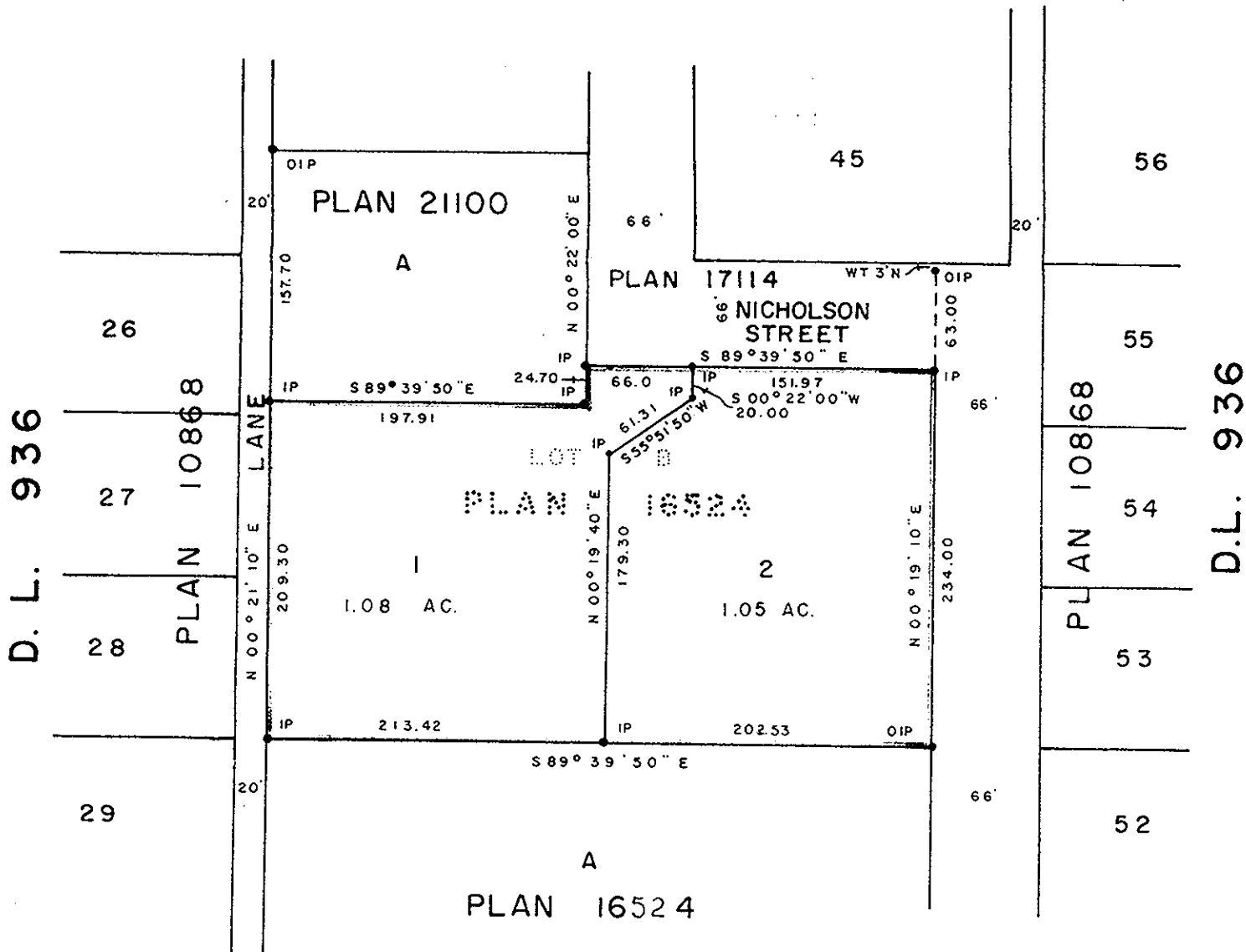
Ref: **G**

PLAN OF SUBDIVISION OF
LOT B, PLAN 16524, EXCEPT
PLANS 20255 & 21100
DISTRICT LOT 936
CARIBOO DISTRICT - BRITISH COLUMBIA

SCALE: 1" = 100'

NOTE: Bearings are astronomic, derived from the west
boundary of Lot B, Plan 16524, as shown on
Plan 21100.

LEGEND: • OIP denotes an old iron pin found.
• IP denotes an iron pin set.



I, DONALD A. DUFFY of the City of Prince George,
a British Columbia Land Surveyor, make oath and say
that I was present at and did personally superintend
the survey represented by this plan and that the survey
and plan are correct. The said survey was completed
on the 24th day of JUNE, 1974.

[Signature]
B.C.L.S.

Sworn before me this 23
day of August, 1974

[Signature]
A Commissioner for taking Affidavits
for British Columbia.

CROSS-ATLANTIC ENTERPRISES LTD.

[Signature]
PRES.

CITY OF PRINCE GEORGE

[Signature]
Mayor

[Signature]
Clerk

Approved under the Land Registry Act
this 15th day of AUG., 1974

[Signature]
Approving Officer, City of Prince George

This plan lies within the Fraser-Fort George
Regional District.

W. D. USHER & ASSOCIATES
LAND SURVEYORS
PRINCE GEORGE - B.C.
GS 58 6250