

RECEIVED

SEP 23 1974

CITY ASSESSOR
PRINCE GEORGE

PLAN No 21 680

Deposited in the Land Registry
Office at Prince George, B.C. this
22 day of AUGUST, 1974.

E.T. SCHOOLEY

Registrar

Per: J. S. Finlayson
(SURVEYOR L.T.O.)

PLAN OF SUBDIVISION OF
LOTS 68 & 70, PLAN 20829
DISTRICT LOT 2507 &
LOT 85, PLAN 20829
DISTRICT LOT 2610
CARIBOO DISTRICT-BRITISH COLUMBIA

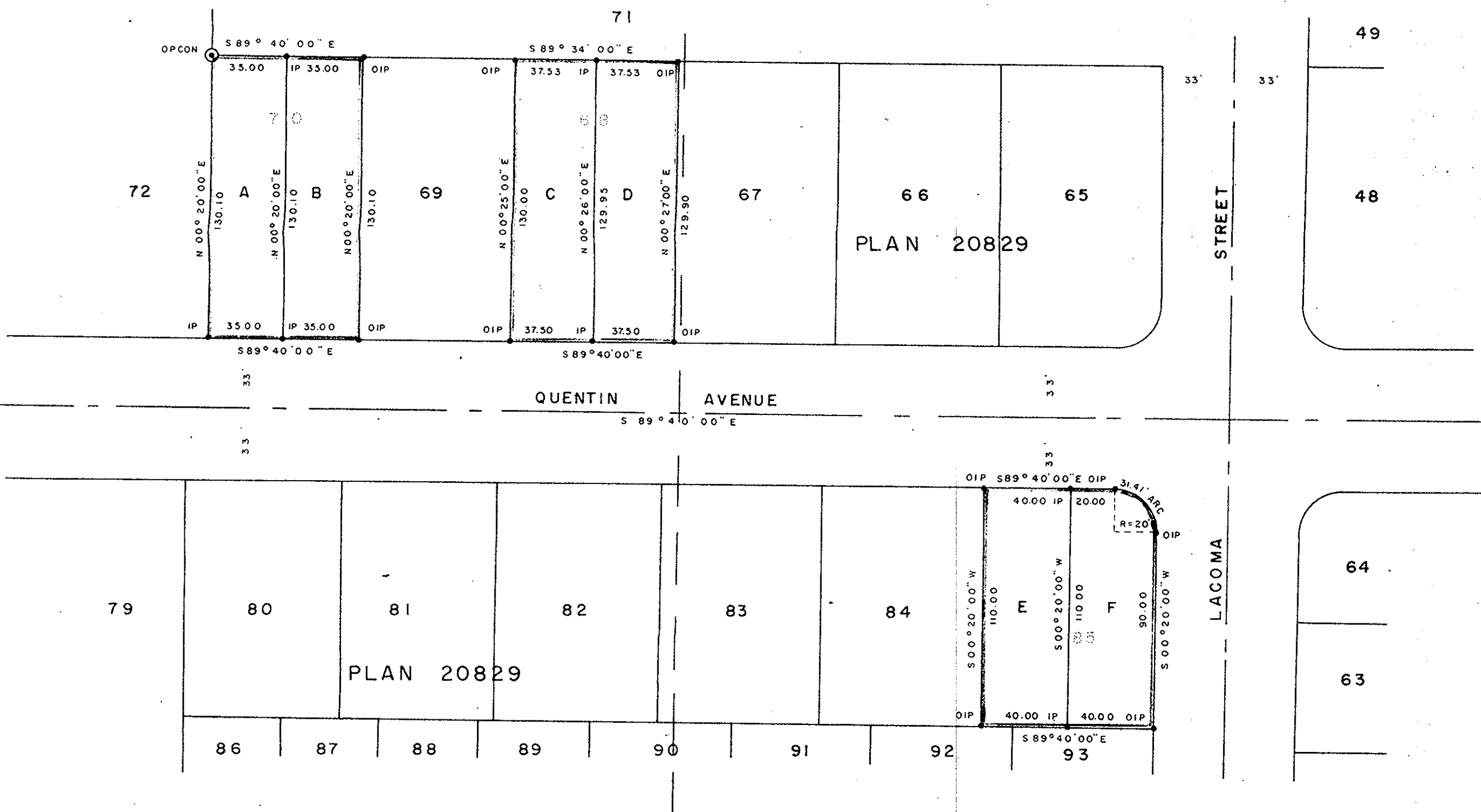
SCALE: 1" = 50'

NOTE: Bearings are astronomic, derived from the
South boundary of lots 68 & 70, Plan 20829.

LEGEND: ⊙ OPCON denotes an old concrete monument found.
• OIP denotes an old iron pin found.
• IP denotes an iron pin set.



D. L. 2507 D.L. 2610



I, DONALD A. DUFFY of the City of Prince George,
a British Columbia Land Surveyor, make oath and say
that I was present at and did personally superintend
the survey represented by this plan and that the survey
and plan are correct. The said survey was completed
on the 6 day of July, 1974.

[Signature]
B.C.L.S.

Sworn before me this 12
day of July, 1974.

[Signature]
A Commissioner for taking Affidavits
for British Columbia.

NORTHERN FREEHOLD LTD.

[Signature]

Douglas Wedman

[Signature]

WITNESS: *[Signature]*

CITY OF PRINCE GEORGE

[Signature]
Mayor

[Signature]
Clerk

Approved under the Land Registry Act
this 16th day of AUG, 1974.

[Signature]
Approving Officer, City of Prince George

This plan lies within the Fraser-Fort George
Regional District.

W. D. USHER & ASSOCIATES
LAND SURVEYORS
PRINCE GEORGE - B.C.
GR 72-73 6270