

RECEIVED

PLAN OF SUBDIVISION OF
LOTS 16, 17, 18 & 19, BLOCK 6, PLAN 721
DISTRICT LOT 1426
CARIBOO DISTRICT - BRITISH COLUMBIA

SEP 23 1974

CITY ASSESSOR
PRINCE GEORGE

SCALE: 1" = 100'

PLAN N^o 21 664

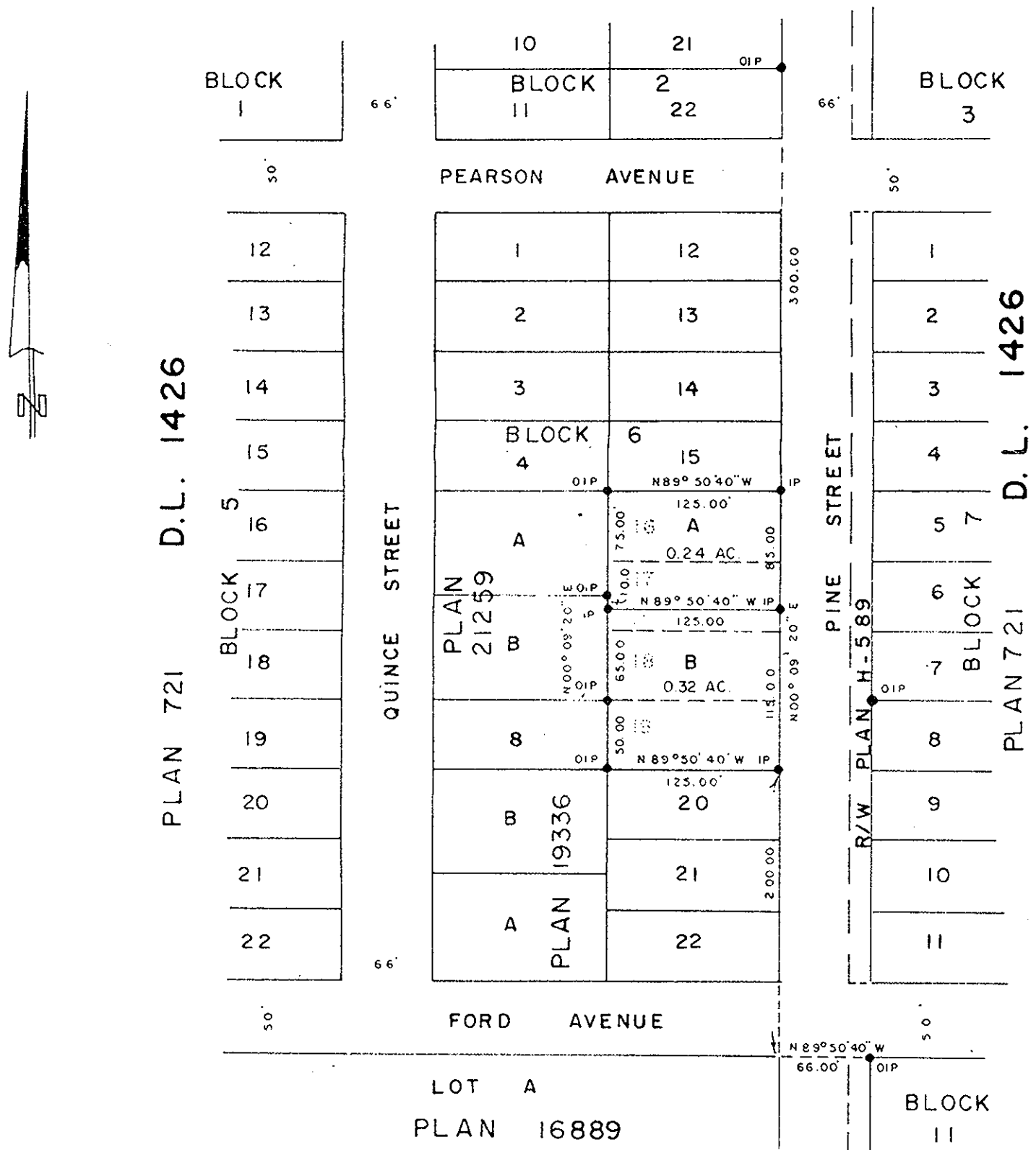
NOTE: Bearings are astronomic, derived from the west
boundary of Pine Street, as shown on Plan H-589.

Deposited in the Land Registry
Office at Prince George, B.C. this
8. day of AUGUST, 1974.

LEGEND: •OIP denotes an old iron pin found.
•IP denotes an iron pin set.

E.T. SCHOOLEY
Registrar

PER: J. Spintale
(SURVEYOR L.R.O.)



I, DONALD A. DUFFY of the City of Prince George,
a British Columbia Land Surveyor, make oath and say
that I was present at and did personally superintend
the survey represented by this plan and that the survey
and plan are correct. The said survey was completed
on the 11th day of April, 1974.

For Signatures of Approving
Officer and Chargees see
J 21 103.

Approved under the Land Registry Act
this _____ day of _____, 19____.

Approving Officer, City of Prince George

Sworn before me this 8th day of August, 1974.

Commissioner for taking Affidavits
for British Columbia

This plan lies within the Fraser-Fort George
Regional District.

W. D. USHER & ASSOCIATES
LAND SURVEYORS
PRINCE GEORGE - B.C.
GY 43 6004