

S. E. 1/4 D. L. 954

Plan 11294

Plan 10697

REM. S.W. 1/4

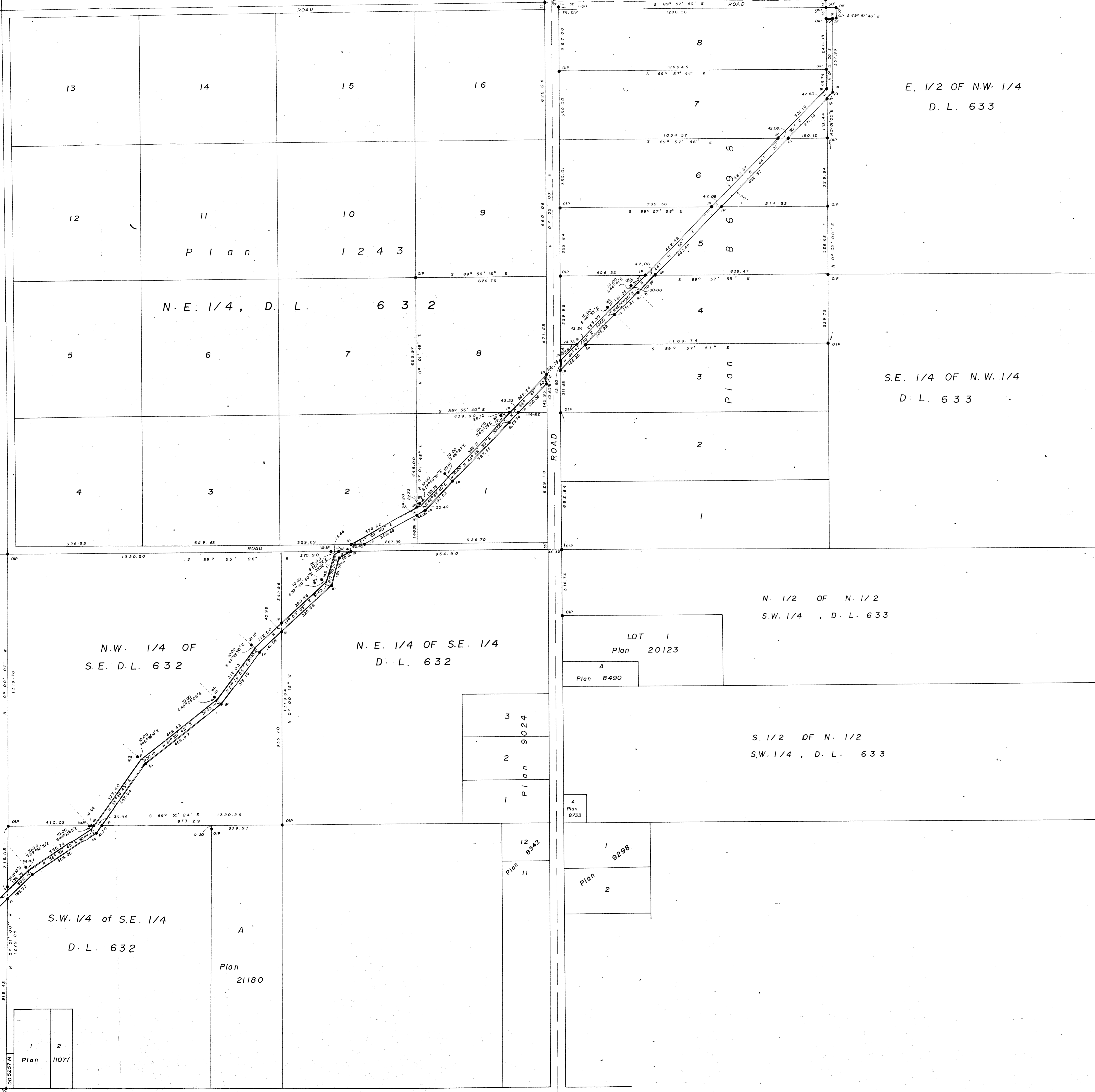
D. L. 957

PLAN NO. 21657

DEPOSITED IN THE LAND REGISTRY OFFICE AT PRINCE GEORGE THIS 2. DAY OF AUGUST 1974

E.T. SCHOOLEY REGISTRAR

per J. Simons (Surveyor L.R.O.)



E. 1/2 OF N.W. 1/4
D. L. 633

S.E. 1/4 OF N.W. 1/4
D. L. 633

N. 1/2 OF N. 1/2
S.W. 1/4, D. L. 633

N.W. 1/4 OF
S.E. D. L. 632

N. E. 1/4 OF S.E. 1/4
D. L. 632

S. 1/2 OF N. 1/2
S.W. 1/4, D. L. 633

S.W. 1/4 of S.E. 1/4
D. L. 632

BOOK OF REFERENCE			
D. L.	DESCRIPTIVE PART	€ DIST.	AREA
632	REM. S.W. 1/4	1273.64	0.877 Ac.
	S.W. 1/4 OF S.E. 1/4	549.62	0.379 Ac.
	N.W. 1/4 OF S.E. 1/4	1316.37	0.907 Ac.
	N.E. 1/4 OF S.E. 1/4	487.18	0.336 Ac.
	ROAD	68.64	
	LOT 2, PLAN 1243	341.05	0.235 Ac.
	LOT 1, PLAN 1243	656.15	0.452 Ac.
633	LOT 8, PLAN 1243	235.36	0.162 Ac.
	ROAD	46.86	
	ROAD	46.87	
	LOT 3, PLAN 8698	136.20	0.094 Ac.
	LOT 4, PLAN 8698	467.57	0.322 Ac.
	LOT 5, PLAN 8698	462.48	0.318 Ac.
	LOT 6, PLAN 8698	462.57	0.318 Ac.
LOT 7, PLAN 8698	301.18	0.207 Ac.	
E. 1/2 OF N.W. 1/4	368.25	0.254 Ac.	
TOTAL		7219.99	4.861 Ac.

REGIONAL DISTRICT FRASER - FORT GEORGE

PLAN OF RIGHT OF WAY
IN DISTRICT LOTS 632 & 633
CARIBOO DISTRICT

Scale: 1" = 200'

BEARINGS ARE ASTRONOMIC, DERIVED FROM SOUTH BDY. D.L. 632, SHOWN AS S 89° 54' 45" E ON PLAN 20590.

- I.P. ----- STANDARD IRON POST.
- C.I.P. ----- CAPPED IRON POST.
- ----- DENOTING "OLD"
- W. ----- DENOTING "WITNESS"

THIS PLAN LIES WITHIN THE FRASER - FORT GEORGE REGIONAL DISTRICT.

I, V. BARTELL OF THE CITY OF PRINCE GEORGE, BRITISH COLUMBIA LAND SURVEYOR, MAKE OATH AND SAY THAT I WAS PRESENT AT AND DID PERSONALLY SUPERINTEND THE SURVEY REPRESENTED BY THIS PLAN AND THAT THE SURVEY AND PLAN ARE CORRECT. THE SAID SURVEY WAS COMPLETED ON THE 12 DAY OF July 1974.

V. BARTELL, B.C.L.S.

SWORN BEFORE ME AT PRINCE GEORGE THIS 12 DAY OF July 1974

A. Commissioner for Taking Affidavits for British Columbia