

PLAN OF SUBDIVISION OF PART OF
REMAINDER OF S.W. 1/4 OF S.E. 1/4
DISTRICT LOT 632
CARIBOO DISTRICT - BRITISH COLUMBIA

SCALE: 1" = 200'

NOTE: Bearings are astronomic, derived from the north boundary of the S.W. 1/4 of S.E. 1/4 D.L. 632, as shown on Plan 21180.

LEGEND: • OIP denotes an old iron pin found.
• IP denotes an iron pin set.
B.T. denotes bearing tree.

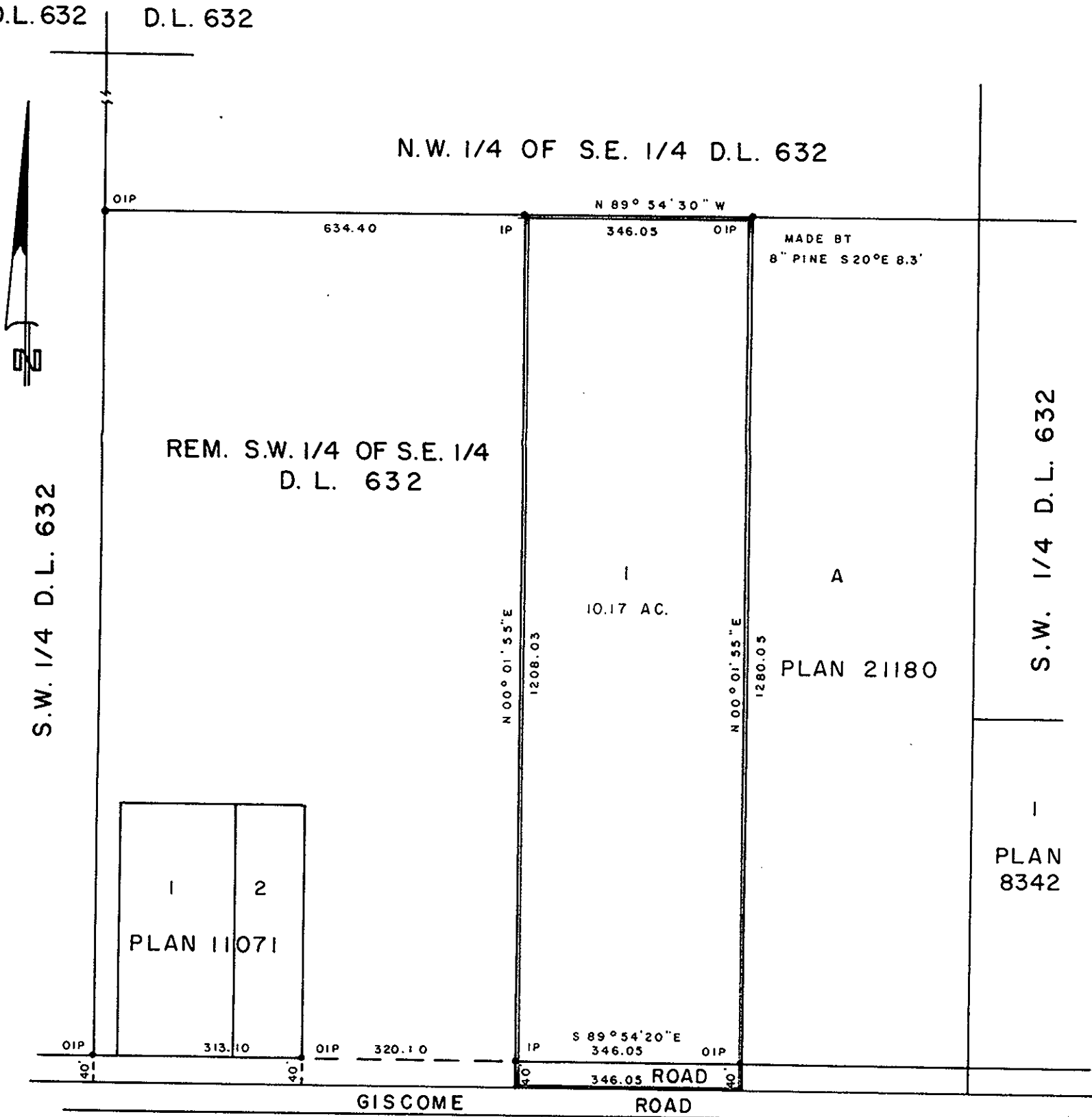
PLAN No 21639

Deposited in the Land Registry Office at Prince George, B.C. this 25th day of JULY, 1974

E. T. SCHOOLEY
Registrar

N.W. 1/4 D.L. 632 N.E. 1/4 D.L. 632

N.W. 1/4 OF S.E. 1/4 D.L. 632



I, DONALD A. DUFFY of the City of Prince George, a British Columbia Land Surveyor, make oath and say that I was present at and did personally superintend the survey represented by this plan and that the survey and plan are correct. The said survey was completed on the 27 day of MAY, 1974.

D. L. 1543

Approved under the Land Registry Act this 24th day of JUNE, 1974.

[Signature]
Approving Officer, Dept. of Highways.

Sworn before me this 28 day of JUNE, 1974.

[Signature]
A Commissioner for taking Affidavits for British Columbia.

[Signature] OWNER
[Signature] WITNESS.

This plan lies within the Fraser-Fort George Regional District.