

PLAN of SUBDIVISION
of LOT 1, PLAN 7020, REM. LOT 78
and PART LOT 84, PLAN 10868
D. L. 936
CARIBOO DISTRICT

Scale: 1" = 100'

RECEIVED **Plotted GK**

AUG 13 1974

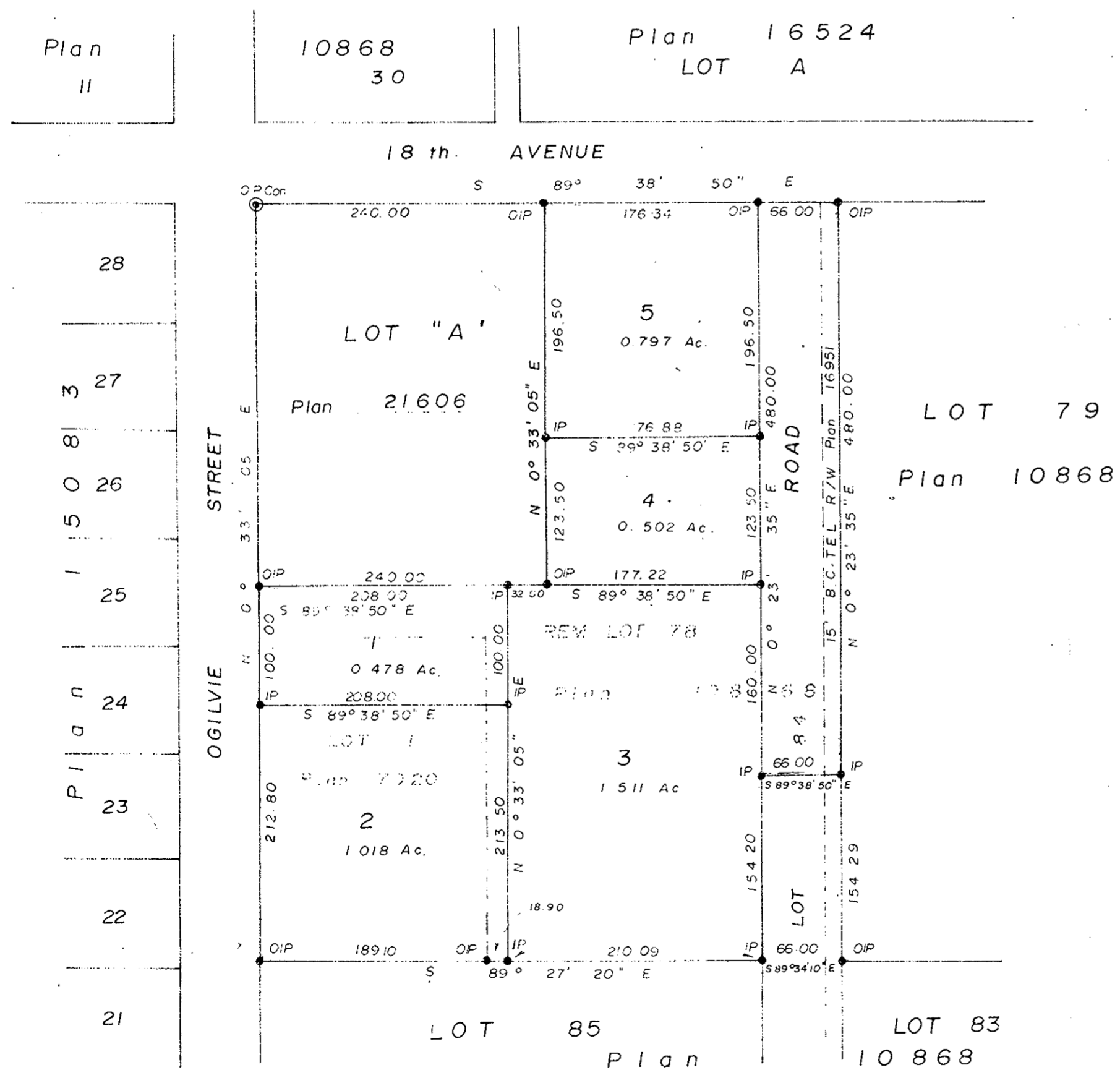
CITY ASSESSOR
PRINCE GEORGE

PLAN No 21 626

Deposited in the Land Registry Office at
PRINCE GEORGE on the 16. day of JULY 1974.

E.T. SCHOOLEY
Registrar

per: J. S. [Signature]
(SURVEYOR L.R.O.)



BRITISH COLUMBIA TELEPHONE COMPANY

MONTREAL TRUST COMPANY

VICE-PRESIDENT

ASSISTANT SECRETARY

ASSISTANT SECRETARY

AUTHORIZED SIGNING OFFICER

Bearings are astronomic and are derived from
South Bdy. of 18th AVE, shown as
S 89° 38' 50" E on Plan 10868

- P.con. Standard Concrete Post.
- P.Rock Standard Rock Post.
- P.P. Standard Pipe Post.
- I.P. Standard Iron Post.
- P. Wooden Post.
- L.P. Lead Plug.
- Denoting "Old"
- WT. Denoting "Witness"
- CIP. Capped Iron Post

I, V. BARTELL, of the CITY OF PRINCE GEORGE
British Columbia Land Surveyor, make oath and
say that I was present at and did personally
superintend the survey represented by this
plan and that the survey and plan are correct.
The said survey was completed on
the 2. day of JULY, 1974.

[Signature]
V. Bartell, B.C.L.S.

Sworn before me at PRINCE GEORGE
this 2 day of JULY, 1974.

[Signature]
A commissioner for taking affidavits
for British Columbia.

Approved under the Land Registry Act
on the 12th day of JULY, 1974.

[Signature]
Approving Officer

Owner [Signature]

This plan lies within the FRASER
FORT GEORGE Regional District.

Witness Joan M. Yaw

Approved as to Road dedication

B.C. Telephone Company

The seal of the City of Prince George
was affixed hereto in the presence of

Mayor Carina-Jane Gray
Acting
City Clerk [Signature]
ACTING

McWilliam-Whyte-Gable & Associates
B.C. LAND SURVEYORS
PRINCE GEORGE | SMITHERS | KAMLOOPS

REF No: 74147