

RECEIVED

JUL 23 1974

CITY ASSESSOR  
PRINCE GEORGE

PLAN N<sup>o</sup> 21615

Deposited in the Land Registry  
Office at Prince George, B.C. this  
3rd day of July, 1974.

*Copy sent to  
records Aug 21/74*

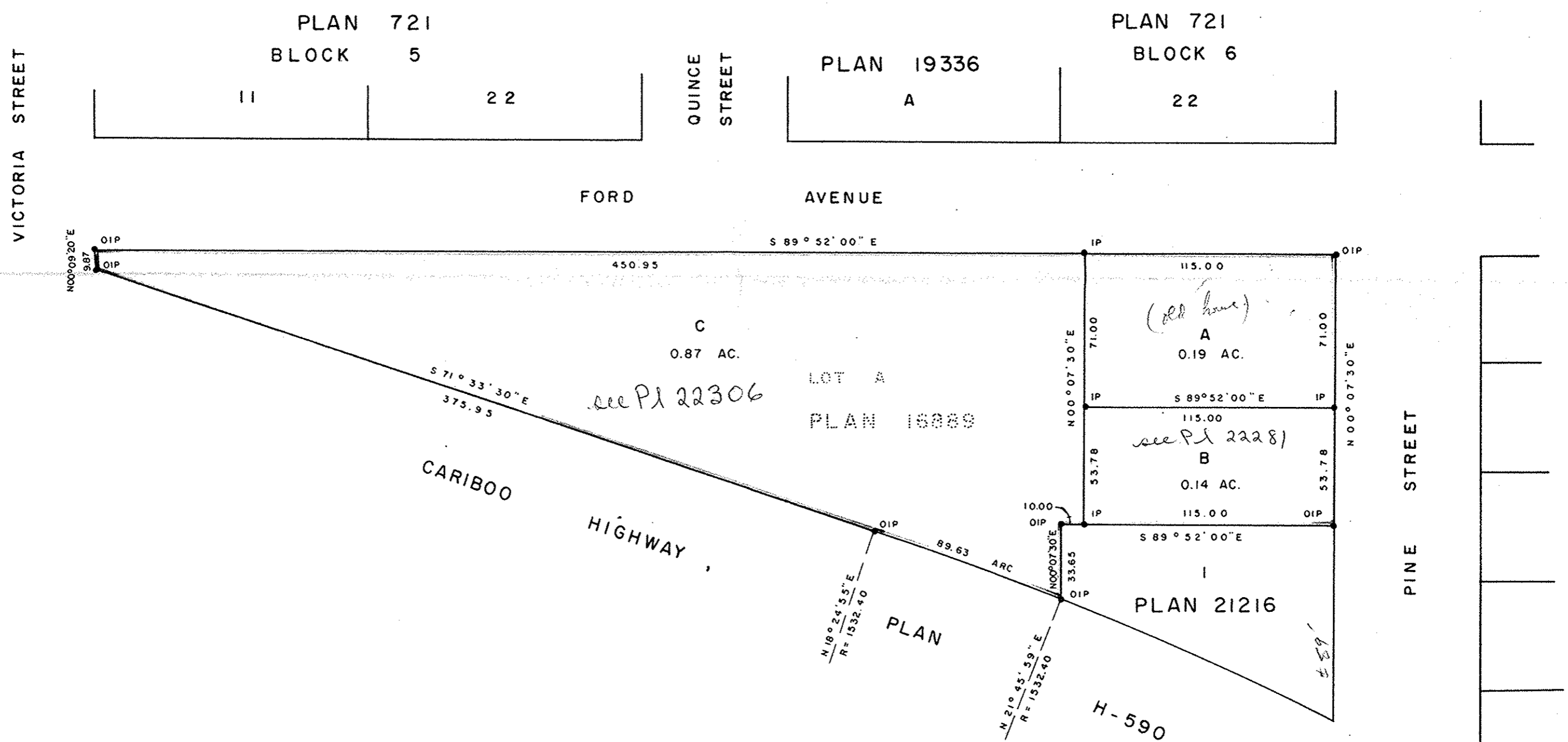
**E.T. SCHOOLEY**  
Registrar

PLAN OF SUBDIVISION OF  
LOT A, PLAN 16889, EXCEPT PLAN 21216  
DISTRICT LOT 1426  
CARIBOO DISTRICT-BRITISH COLUMBIA

SCALE: 1" = 50'

NOTE: Bearings are astronomic, derived from the  
north boundary of Lot A, Plan 16889.

LEGEND: • OIP denotes an old iron pin found.  
• IP denotes an iron pin set.



I, DONALD A. DUFFY of the City of Prince George,  
a British Columbia Land Surveyor, make oath and say  
that I was present at and did personally superintend  
the survey represented by this plan and that the survey  
and plan are correct. The said survey was completed  
on the 12 day of June, 1974.

*[Signature]*  
B.C.L.S.

Sworn before me this 21  
day of June, 1974.

*[Signature]*  
A Commissioner for taking Affidavits  
for British Columbia.

S.A.K. ENTERPRISES LTD.

*[Signature]*

Owner *[Signature]*

Witness *[Signature]*

Approved under the Land Registry Act  
this 20th day of JUNE, 1974.

*[Signature]*  
Approving Officer, City of Prince George

This plan lies within the Fraser-Fort George  
Regional District.

W. D. USHER & ASSOCIATES  
LAND SURVEYORS  
PRINCE GEORGE - B.C.  
FU 72 6097