

EXPLANATORY PLAN OF EASEMENT THROUGH
LOT 8, PLAN 16488
DISTRICT LOT 1598
CARIBOO DISTRICT - BRITISH COLUMBIA

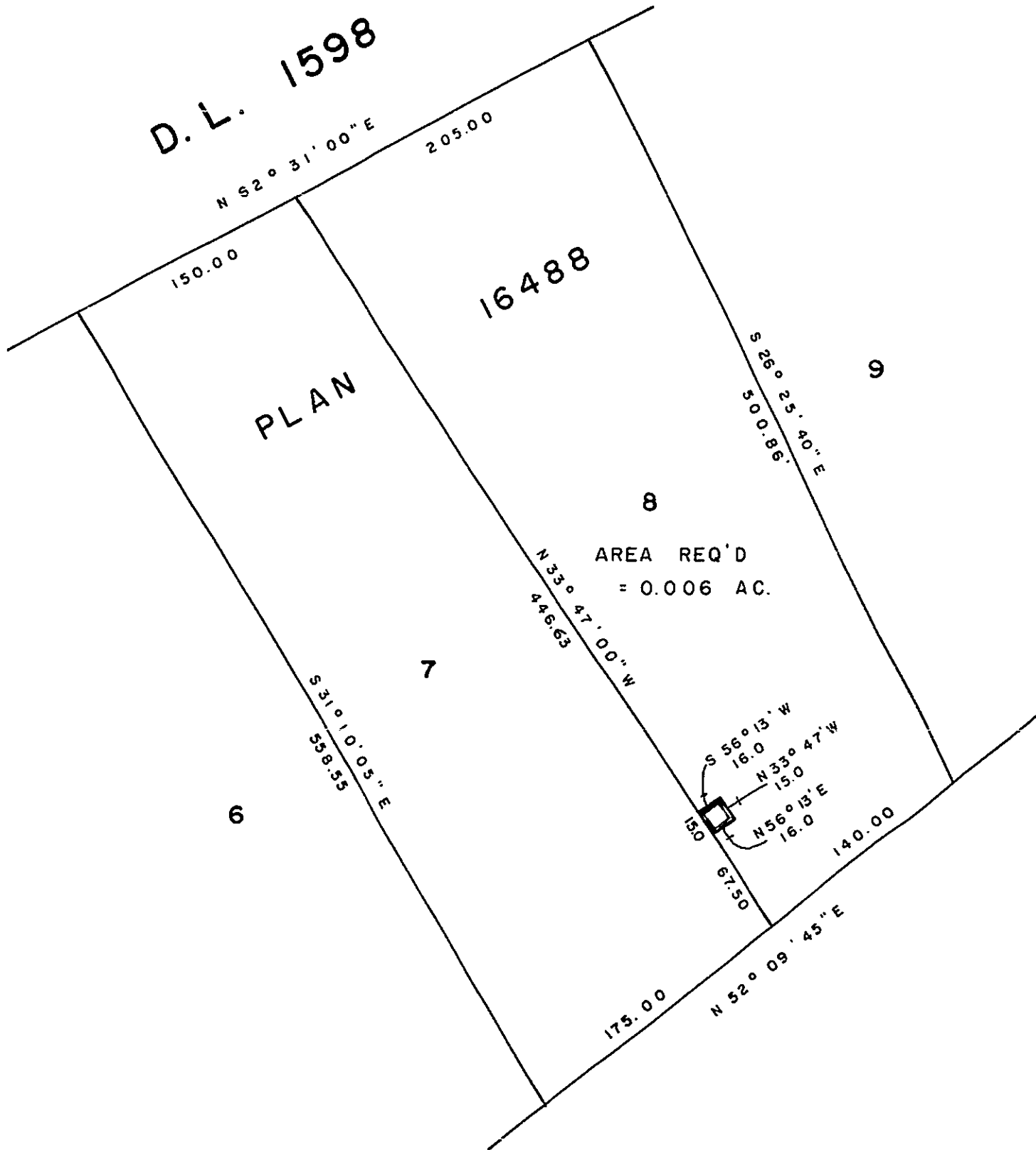
SCALE: 1" = 100'

PLAN N^o **21 581**

Deposited in the Land Registry
Office at Prince George, B.C. this
20 day of JUNE, 1974.

E.T. SCHOOLEY
Registrar

Per: *J. Finestale*
(SURVEYOR L.R.O.)



CERTIFIED CORRECT

According to information shown on
Plan of record in the Prince George
Land Registry Office.

[Signature]
D. A. DUFFY, B.C.L.S.
May 2, 1974.

This plan lies within the Fraser-Fort George
Regional District.

W. D. USHER & ASSOCIATES
LAND SURVEYORS
PRINCE GEORGE — B. C.
62 53 5878 A