

SURVEY PLAN OF BLOCK D OF DISTRICT LOT 2155, CARIBOO DISTRICT.

B.C.G.S. 93G.097

7407044

Scale: 1 : 2000



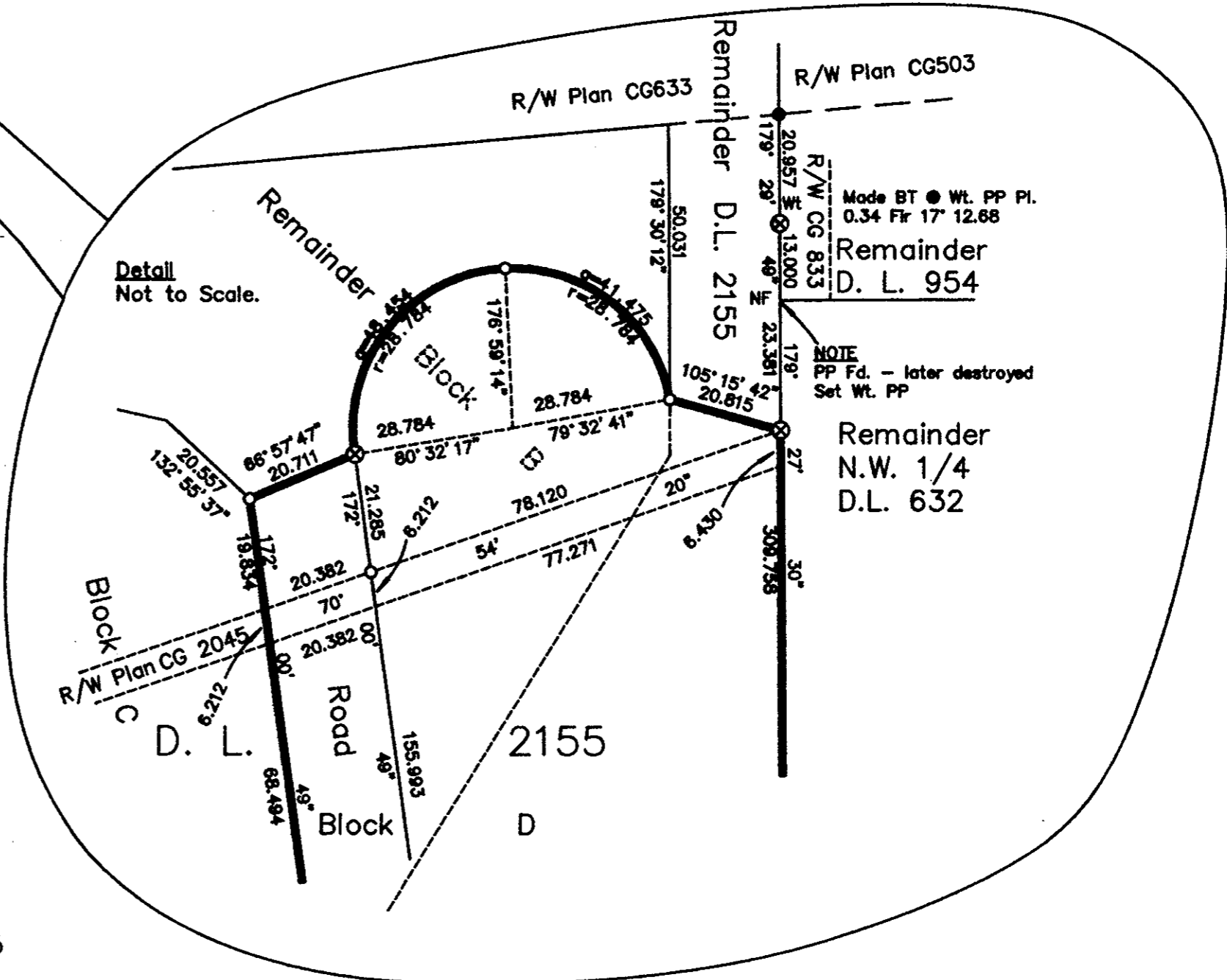
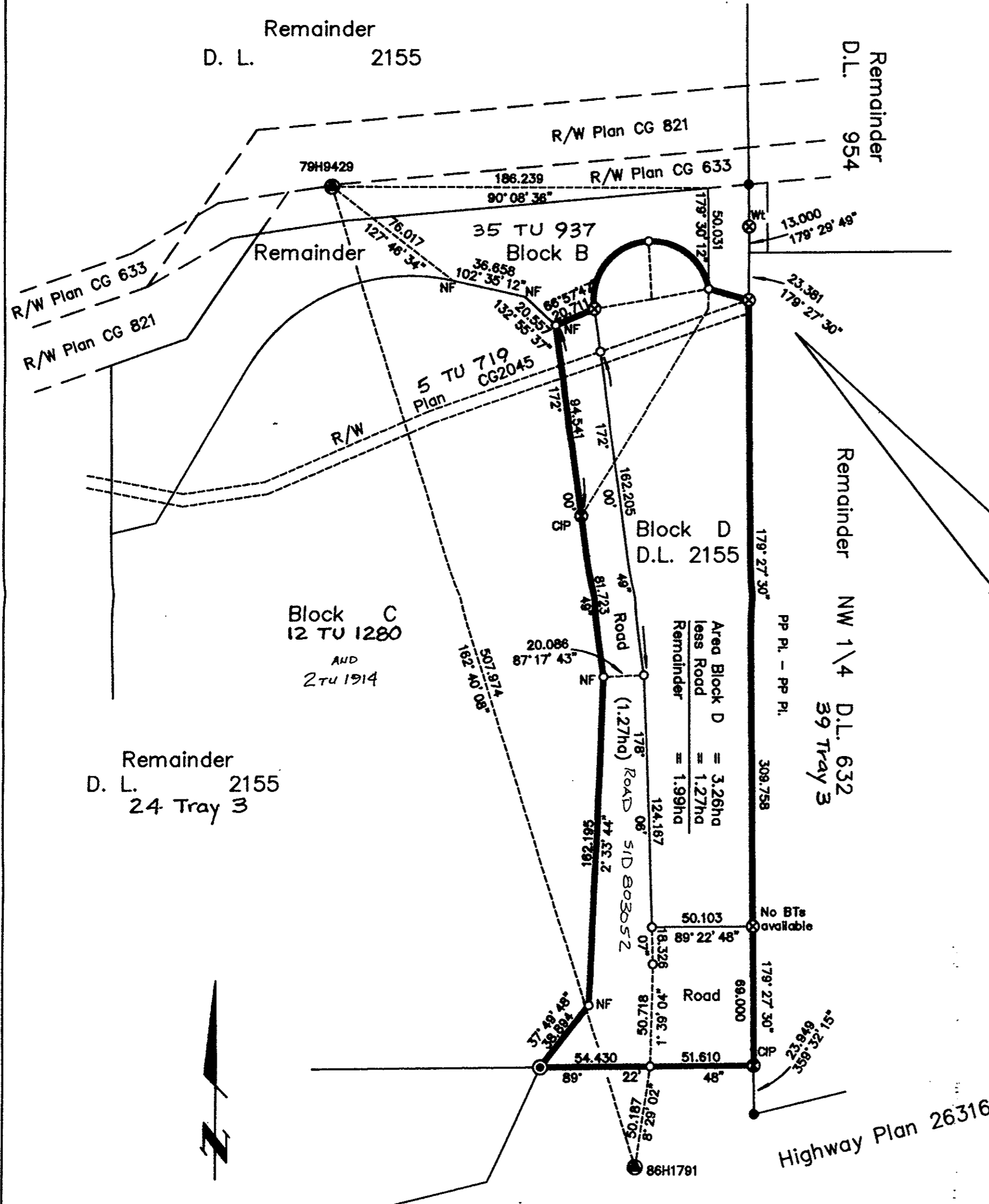
LEGEND

All distances are in metres and decimals thereof unless otherwise shown.

Grid bearings are derived from observations between control monuments 86H1791 and 79H9429, integrated survey area number 39, City of Prince George, B.C. NAD83(CSRS)

Note: This plan shows ground level measured distances. Prior to computation of U.T.M. co-ordinates multiply by the combined factor 0.99950065

- ⊙ Standard Concrete Post Found
- ⊗ Standard Capped Post Found
- ⊕ Standard Capped Post Placed
- Standard Iron Post Found
- Standard Iron Post Placed
- ⊙ Control Monument



This plan lies within the Fraser-Fort George Regional District.

Highway Plan 23000 Composite Plans

Highway Plan 26316

I, Dale L. Keown, a British Columbia Land Surveyor, of Prince George, in British Columbia, certify that I was present at and personally superintended the survey represented by this plan, and that the survey and plan are correct. The survey was completed on the 27th day of July, 2001.

Dale Keown

Dale L. Keown, B.C.L.S.

OFFICIAL PLAN
CONFIRMED UNDER SECTION 72
LAND ACT

Dale Keown
for Surveyor General
Victoria, B.C., Sept. 27, 2001

KILBRIDE LAND SURVEYING LTD.
British Columbia Land Surveyors
Prince George, B.C.
Ph: (250) 562-1196 Fax: 562-3656

F.B.- RA D.L.- 2155 FILE No. -950277