


151580

OFFICIAL PLAN

CONFIRMED
 UNDER SECTION 67-LAND ACT

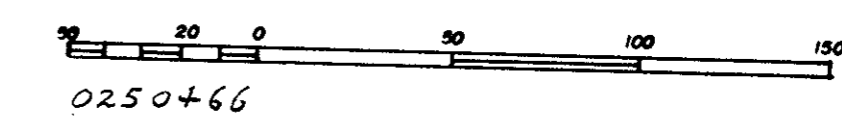


ASSISTANT SURVEYOR GENERAL
 VICTORIA, B.C. June 6, 1985

SURVEY PLAN OF BLOCK C OF LOT 2155, CARIBOO DISTRICT.

B.C.GS. 936.097

SCALE: 1: 2000 (DISTANCES ARE IN METRES)



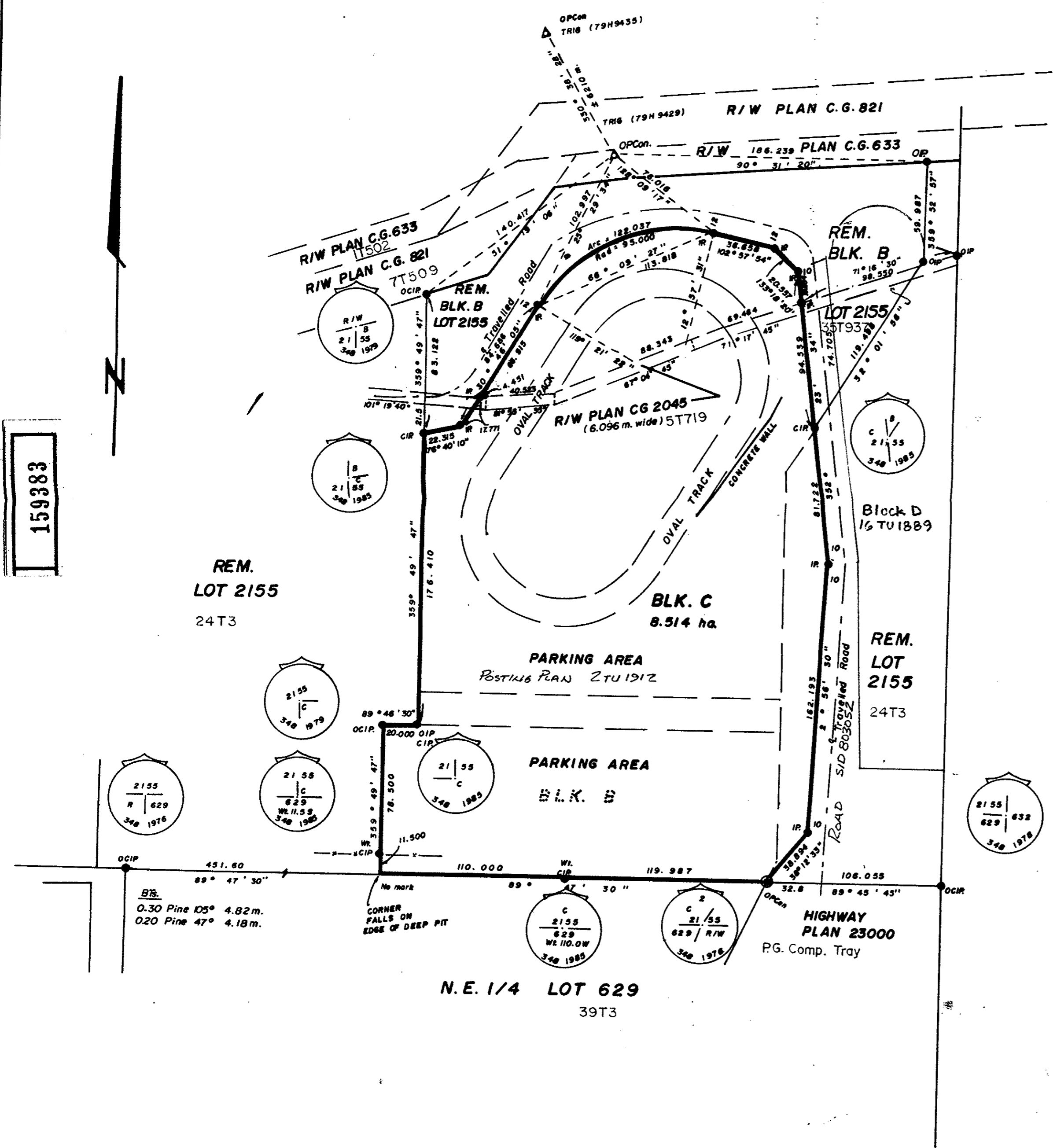
BEARINGS ARE ASTRONOMIC DERIVED FROM THE WEST BDY.
 OF BLOCK B, LOT 2155 SHOWN AS 359° 49' 47."

I, VICTOR BARTELL, A BRITISH COLUMBIA LAND SURVEYOR,
 OF PRINCE GEORGE IN BRITISH COLUMBIA, CERTIFY THAT I
 WAS PRESENT AT AND PERSONALLY SUPERINTENDED THE SURVEY
 REPRESENTED BY THIS PLAN AND THAT THE SURVEY AND PLAN
 ARE CORRECT. THE SURVEY WAS COMPLETED ON THE 29 DAY
 OF MARCH, 1985.



VICTOR BARTELL, B.C.L.S.

THIS PLAN LIES WITHIN THE FRASER FORT GEORGE
 REGIONAL DISTRICT.



159383

12T1280

McWILLIAM, WHYTE, GOBLE, & ASSOCIATES,
 B.C. LAND SURVEYORS,
 PRINCE GEORGE - KAMLOOPS - SMITHERS - SALMON ARM
 REF. NO. 85004

151580