

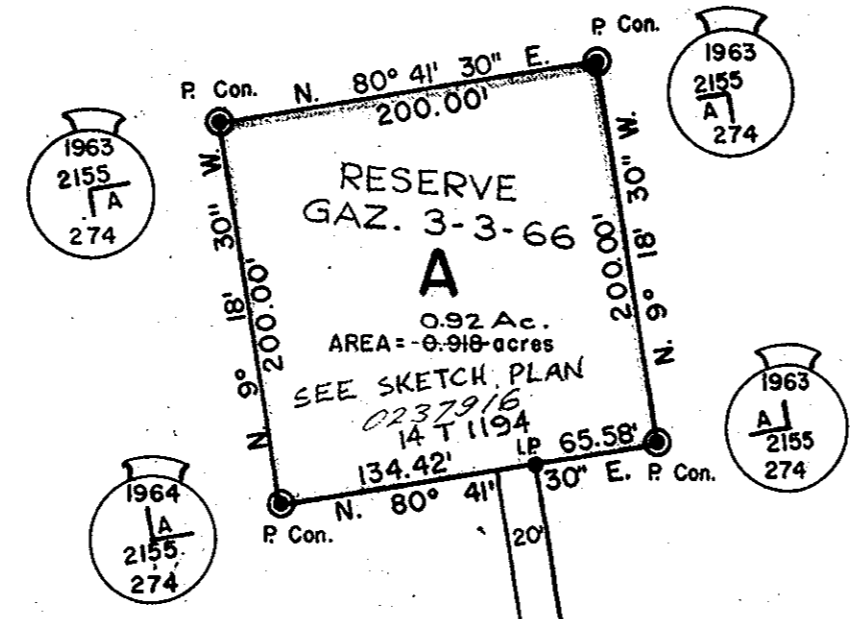
PLAN OF BLOCK 'A'  
 DISTRICT LOT 2155  
 CARIBOO DISTRICT

**OFFICIAL PLAN**

SURVEY  
 PLAN OF BLOCK 'A'  
 DISTRICT LOT 2155  
 CARIBOO DISTRICT

Scale: 1 inch = 100 feet.

125791



I, K.C. Rathbone, of the City of Edmonton, a duly authorised Land Surveyor for the Province of British Columbia, make oath and say as follows: I commenced the survey represented by this plan on the 18th day of October, 1963, and completed it on the 21st day of October, 1963. I was present at and did personally superintend the said survey. This plan is a correct representation of the work done on the ground by me.

Sworn before me at Victoria, B.C.  
 this 10th day of July, 1964.  
 A Commissioner for Oaths in and for the Province of British Columbia.

*K.C. Rathbone*  
 B.C.L.S.

D.L. 2155  
2473

CROWN LAND

BC.

LEGEND

- Meridian from Plan N<sup>o</sup> C.G. 633
- IP denotes standard iron pin
- PP denotes standard pipe post
- ⊙ P. Con. denotes pipe post in concrete
- denotes 'old'

PLAN OF BLOCK 'A'  
 DISTRICT LOT 2155  
 CARIBOO DISTRICT