

HE, JE

PLAN OF SUBDIVISION
OF PART OF
S. E. 1/4 OF DISTRICT LOT 754
CARIBOO DISTRICT-BRITISH COLUMBIA

PLAN No 21540
Deposited in the Land Registry
Office at Prince George, B.C. this
29 day of May, 1974.

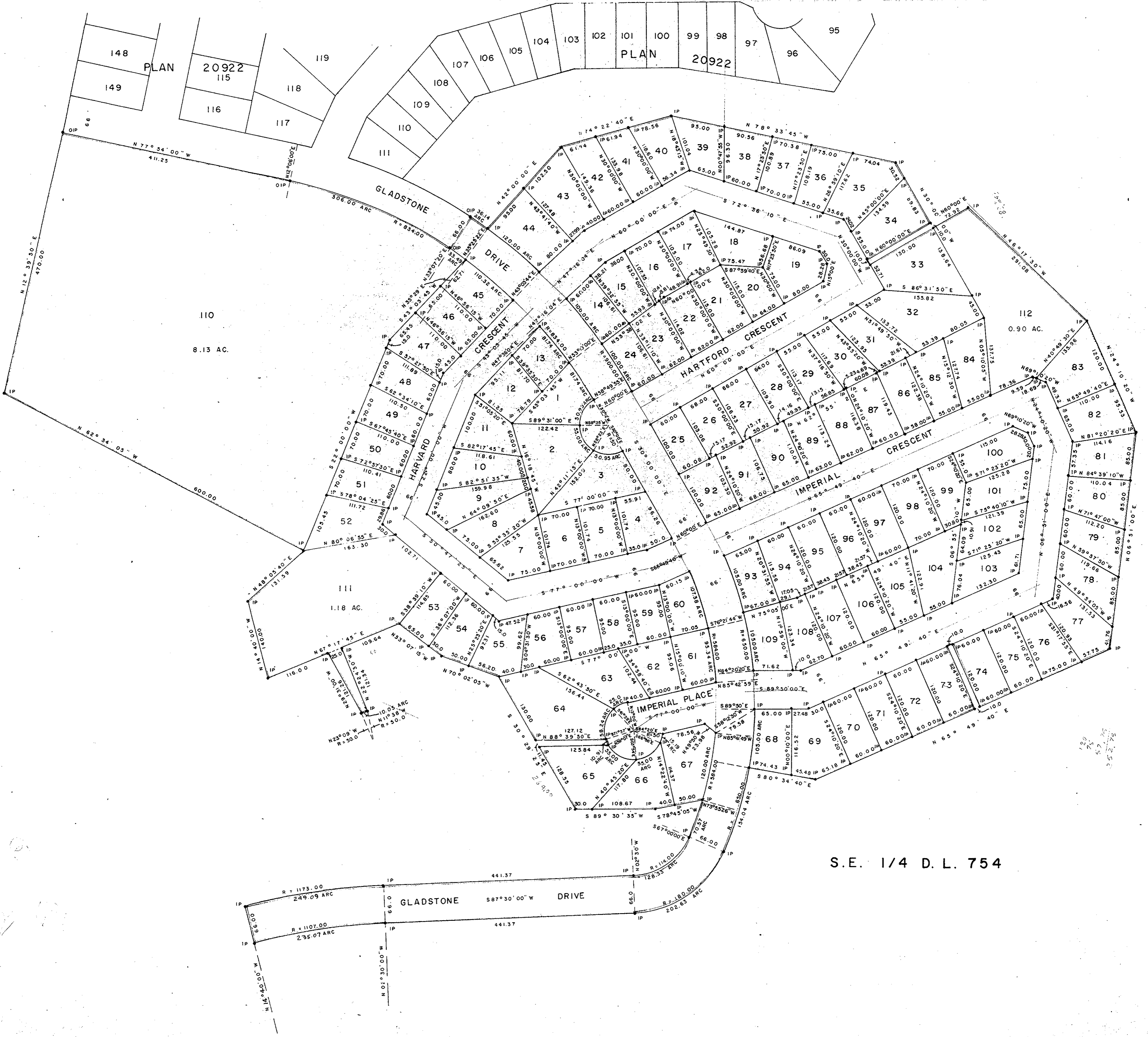
SCALE: 1" = 100'

NOTE: Bearings are astronomic, derived from the south
boundary of Gladstone Drive, as shown on Plan 20922.

LEGEND: • OIP denotes an old iron pin found.
• IP denotes an iron pin set.

C. T. SCHOOLEY
Registrar
per: J. J. Finlayson
(Surveyor L.R.O.)

S. E. 1/4 D. L. 754



S. E. 1/4 D. L. 754

HEIGHTS LAND DEVELOPMENT CO., LTD.

C. Stinson Director
George Campbell Director

I, DONALD A. DUFFY of the City of Prince George, a British Columbia Land Surveyor, make oath and say that I was present at and did personally superintend the survey represented by this plan and that the survey and plan are correct. The said survey was completed on the 27th day of May, 1974.

[Signature]
B.C.L.S.

Approved under the Land Registry Act
this 27th day of May, 1974.

[Signature]
Approving Officer, Dept. of Highways

Sworn before me this 27th day of May, 1974.

[Signature]
A Commissioner for Taking Affidavits
for British Columbia.

This plan lies within the Fraser-Fort George
Regional District.

W. D. USHER & ASSOCIATES
LAND SURVEYORS
PRINCE GEORGE - B. C.
55