

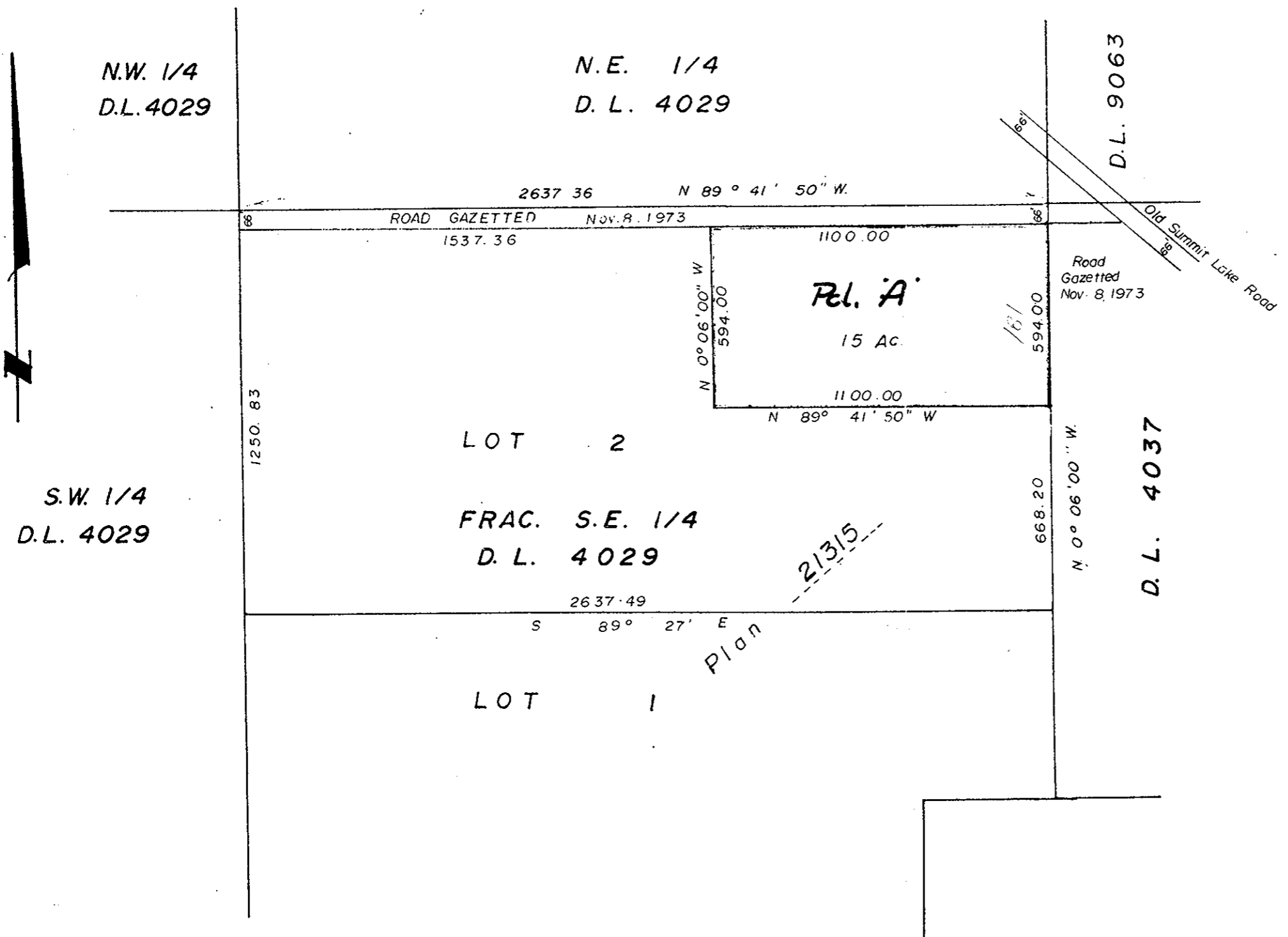
11
PLOTTED (KT)(KU)

EXPLANATORY PLAN OF PART OF LOT 2, PLAN 21315
OF FRAC. S.E. 1/4 D.L. 4029,
CARIBOO DISTRICT.
SCALE: 1" = 400'

PLAN NO. **21 516**
DEPOSITED IN THE LAND REGISTRY OFFICE AT
PRINCE GEORGE THIS 19th DAY OF MAY 1974.

E.T. SCHOOLEY
REGISTRAR

Per: *I. J. ...*
(Surveyor L.R.O.)



OWNER
THE DIRECTOR, THE VETERANS' LAND ACT

S. Mannoly
WITNESS

CERTIFIED CORRECT
this 4th day of DEC, 1973.

Vic ...
V. Bartell, B.C.L.S.

This plan lies within the Fraser Fort-George Regional District.

McWilliam, Whyte, Goble & Associates,
B.C. Land Surveyors,
Prince George - Kamloops - Smithers.

REF. NO. 72118