

REFERENCE PLAN FOR EXPROPRIATION OF PART OF  
THE EAST 1/2 OF THE S.E. 1/4  
DISTRICT LOT 4048  
CARIBOO DISTRICT, BRITISH COLUMBIA

Plotted (GT) (FT)

SCALE 1" = 200'

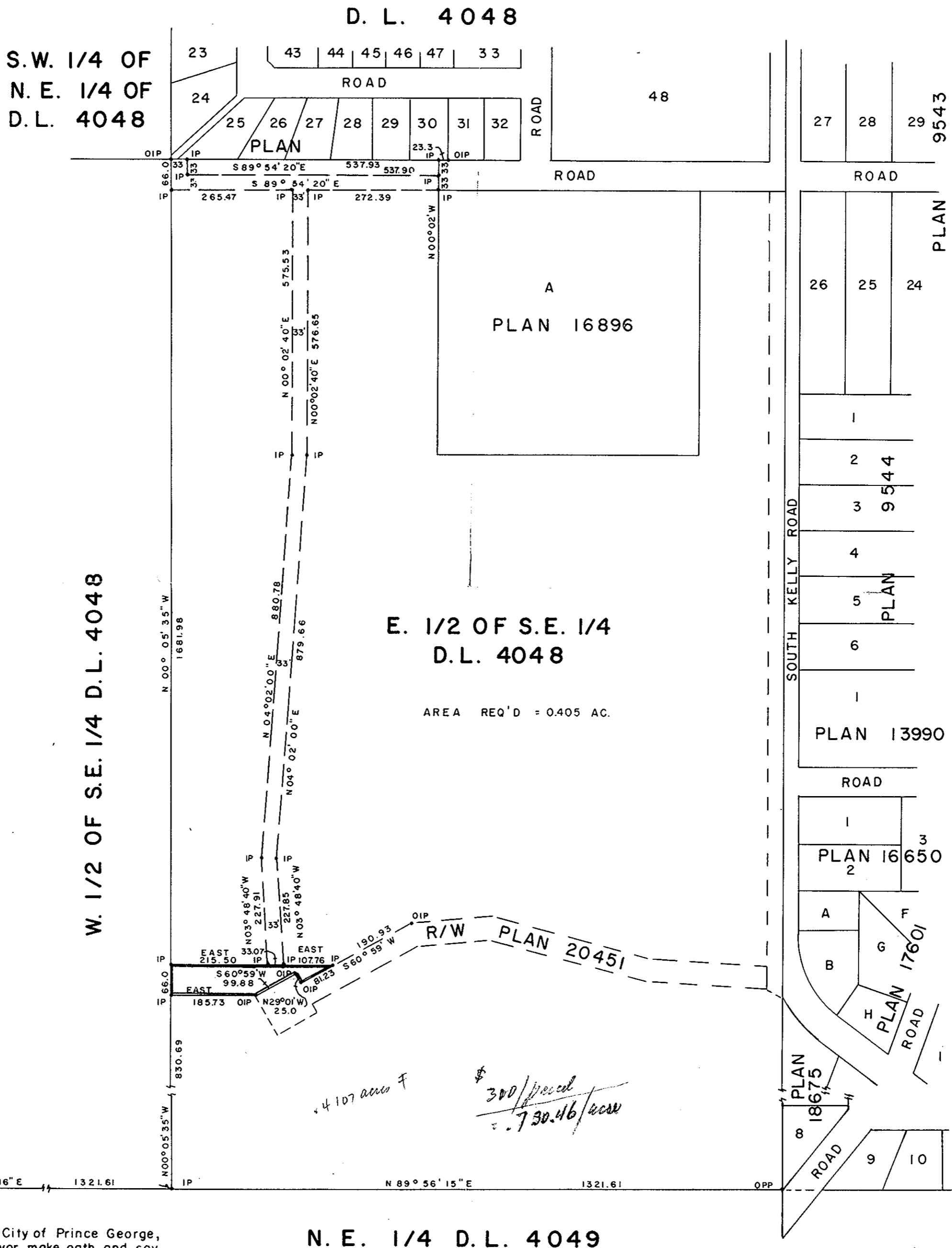
NOTE: Bearings are astronomic, derived from the North boundary of R/W Plan 20451.

LEGEND: •OIP denotes an old iron pin found.  
•IP denotes an iron pin set.  
•OPP denotes an old pipe post found.

PLAN N<sup>o</sup> 21515

Deposited in the Land Registry Office at Prince George, B.C. this 13<sup>th</sup> day of MAY, 1974.

E.T. SCHOOLEY  
Registrar



Measurement north  
1684.22' = by west boundary  
x 66' = 111,158' or 2.5518 ac  
570.86 x 66' = 37,676.76 or .864  
@ 66' wide 2.5518  
1864  
3.4158

4107 ac  
\$ 300/acre  
= 730.46/acre

Length of measurement  
by west boundary 1684.22'  
East-West - 570.86  
2.25508 x 33  
= 1.70 acres

Kelly Road  
full - 5280 2640  
830  
1810  
33  
59730 = 1.37 acres  
43560

This plan lies within the Fraser-Fort George Regional District.

I, DONALD A. DUFFY of the City of Prince George, a British Columbia Land Surveyor, make oath and say that I was present at and did personally superintend the survey represented by this plan and that the survey and plan are correct. The said survey was completed on the 10th day of November, 1972.

*[Signature]*  
B.C.L.S.

Sworn before me this 17<sup>th</sup> day of November, 1972.

*[Signature]*  
A-Commissioner for taking Affidavits for British Columbia.

N. E. 1/4 D. L. 4049