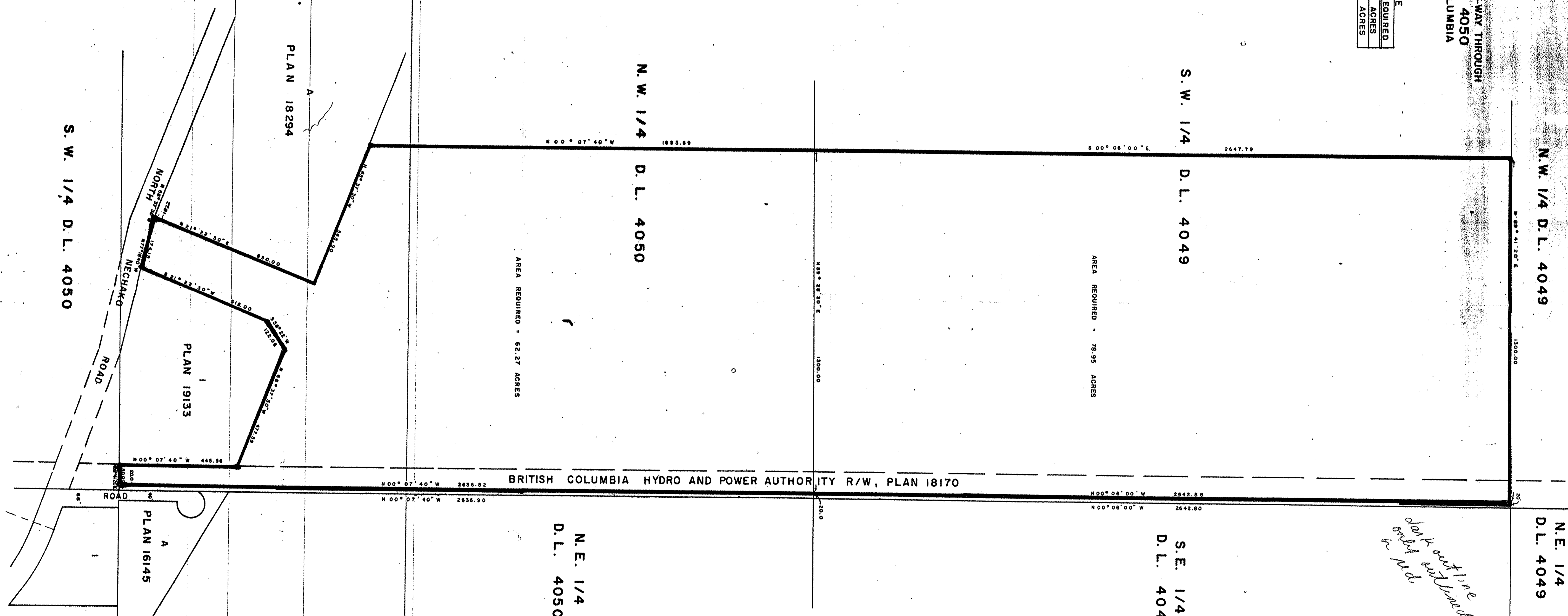


EXPLANATORY PLAN OF RIGHT-OF-WAY THROUGH
DISTRICT LOTS 4049 & 4050
CARIBOO DISTRICT-BRITISH COLUMBIA

SCALE: 1" = 200'

BOOK OF REFERENCE	
PARCEL	AREA REQUIRED
S.W. 1/4 D.L. 4049	78.95 ACRES
N.W. 1/4 D.L. 4050	62.27 ACRES



N.E. 1/4
D.L. 4049

S.E. 1/4
D.L. 4049

N.E. 1/4
D.L. 4050

N.W. 1/4
D.L. 4050

S.W. 1/4
D.L. 4049

PLAN 18294

PLAN 19133

PLAN 16145

S.W. 1/4 D.L. 4050

S.E. 1/4
D.L. 4050

PLAN No 21509
 Deposited in the Land Registry
 Office of Prince George, B.C. this
 22nd day of _____ 1974.
 Registrar
J. Simons
 (Signature L225)

CERTIFIED CORRECT
 According to information shown
 on plans of record in the Prince
 George Land Registry Office.

D.A. DUFFY, B.C.L.S.
 April 16, 1974.

R. G. Stewart
A. Spindle

This plan lies within the Fraser-
 Fort George Regional District.
 W. D. USHER & ASSOCIATES
 LAND SURVEYORS
 PRINCE GEORGE — B. C.
 25444