

Plotted (FQ) (FR)

N.W. 1/4 D.L. 4049

N.E. 1/4  
D.L. 4049

PLAN No. 21508  
Deposited in the Land Registry  
Office at Prince George, B.C. this  
13th day of May, 1974.  
C. T. SCHOOLEY  
Registrar

EXPLANATORY PLAN OF EXPROPRIATION OF  
A 20' STRIP IN PERPENDICULAR WIDTH  
PARALLEL TO THE EAST BOUNDARY OF  
N.W. 1/4 DISTRICT LOT 4050 &  
S.W. 1/4 DISTRICT LOT 4049  
CARIBOO DISTRICT - BRITISH COLUMBIA

SCALE: 1" = 200'

BOOK OF REFERENCE

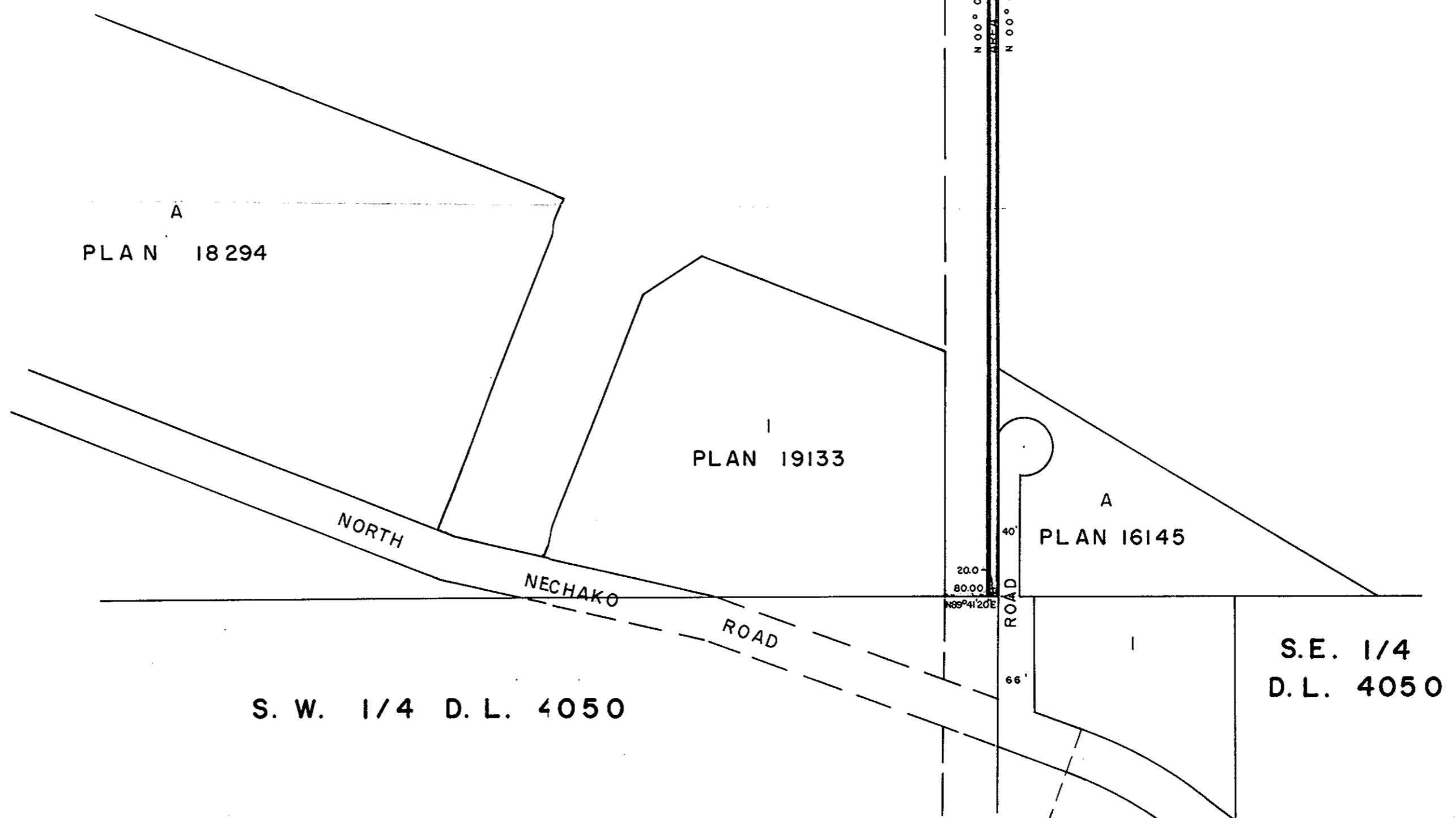
PARCEL	AREA REQUIRED
S.W. 1/4 D.L. 4049	1.21 ACRES
N.W. 1/4 D.L. 4050	1.21 ACRES

S.W. 1/4 D.L. 4049

S.E. 1/4  
D.L. 4049

N.W. 1/4 D.L. 4050

N.E. 1/4  
D.L. 4050



CERTIFIED CORRECT  
According to information shown  
on plans of record in the Prince  
George Land Registry Office.

*D.A. Duffy*  
D.A. DUFFY, B.C.L.S.  
April 16, 1974.

*P. G. Hewitt*  
*A. Hamble*

This plan lies within the Fraser-  
Fort George Regional District.

W.D. USHER & ASSOCIATES  
LAND SURVEYORS  
PRINCE GEORGE - B.C.  
5428 A