

PLAN OF SUBDIVISION OF PART OF  
 S. E. 1/4 DISTRICT LOT 4050  
 CARIBOO DISTRICT-BRITISH COLUMBIA

SCALE: 1" = 100'

NOTE: Bearings are astronomic, derived from the west boundary of Road, as shown on Plan 16145.

LEGEND: • OIP denotes an old iron pin found.  
 • IP denotes an iron pin found.

PLAN N<sup>o</sup> 21 495

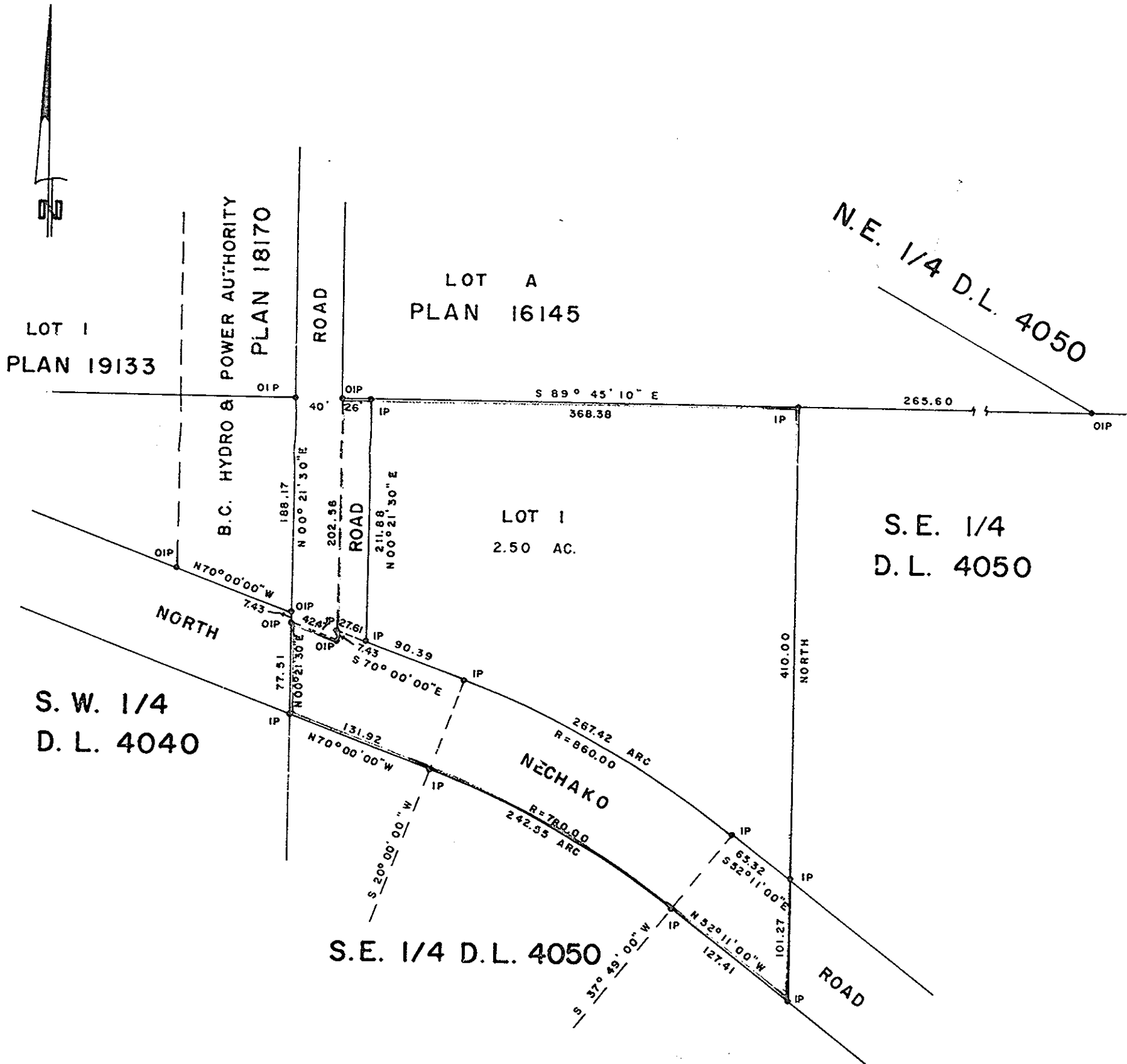
Deposited in the Land Registry Office of Prince George, B.C. this 3<sup>rd</sup> day of MAY, 1974.

E.T. SCHOOLEY

Registrar

Per: J. S. Finlayson

(SURVEYOR L.R.O.)



I, DONALD A. DUFFY of the City of Prince George, a British Columbia Land Surveyor, make oath and say that I was present at and did personally superintend the survey represented by this plan and that the survey and plan are correct. The said survey was completed on the 18<sup>th</sup> day of OCT, 1973

*[Signature]*  
 B.C.L.S.

Sworn before me this 23<sup>rd</sup> day of OCT, 1973

*[Signature]*  
 A Commissioner for taking Affidavits for British Columbia.

SUPERIOR DEVELOPMENTS LTD.

*[Signature]*  
 PRES.

Approved under the Land Registry Act this 4<sup>th</sup> day of MARCH, 1974.

*[Signature]*  
 Approving Officer, Dept. of Highways.

This plan lies within the Fraser-Fort George Regional District.

W. D. USHER & ASSOCIATES  
 LAND SURVEYORS  
 PRINCE GEORGE - B.C.  
 GW 2-3 5426