

RECEIVED

SEP 29 1974

CITY ASSESSOR
PRINCE GEORGE

PLAN Nº 21 483

Deposited in the Land Registry
Office at Prince George, B.C. this
24 day of APRIL, 1974

E.T. SCHOOLEY
Registrar

Per: J. S. Finstuck
(SURVEYOR L.R.O.)

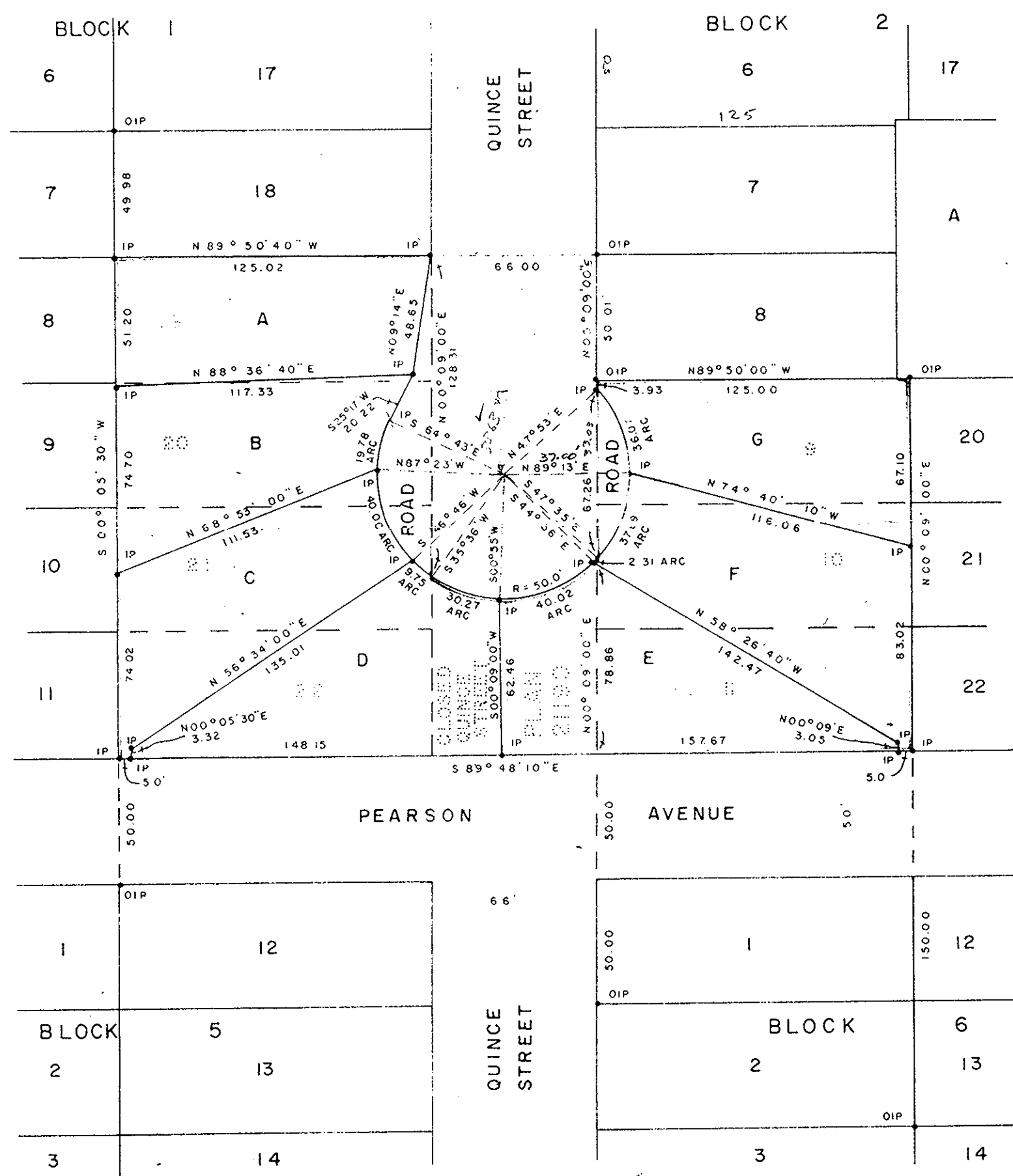
PLAN OF SUBDIVISION OF
LOTS 19, 20, 21 & 22, BLOCK 1, PLAN 721
LOTS 9, 10 & 11, BLOCK 2, PLAN 721 & THAT
PORTION OF CLOSED QUINCE STREET, PLAN 21190
DISTRICT LOT 1426
CARIBOO DISTRICT - BRITISH COLUMBIA

SCALE: 1" = 50'

NOTE: Bearings are astronomic, derived from the
east boundary of Quince Street.

LEGEND: • OIP denotes an old iron pin found.
• IP denotes an iron pin set.

PLAN 721 - D. L. 1426



PLAN 721 - D. L. 1426

I, DONALD A. DUFFY of the City of Prince George,
a British Columbia Land Surveyor, make oath and say
that I was present at and did personally superintend
the survey represented by this plan and that the survey
and plan are correct. The said survey was completed
on the 22 day of March, 1974.

[Signature]
B.C.L.S.

Sworn before me this 24
day of April, 1974

A Commissioner for taking Affidavits
for British Columbia.

Owner Geil Earl Bellamy

Witness Joan M. Yau

Approved under the Land Registry Act
this 19th day of APRIL, 1974

[Signature]
Approving Officer, City of Prince George

This plan lies within the Fraser-Fort George
Regional District.

W. B. OSNER & ASSOCIATES
LAND SURVEYORS
PRINCE GEORGE - B.C.
6164 4620 A