

*EXPLANATORY PLAN OF RIGHT-OF-WAY
in LOT 26, PLAN 19732,
D.L. 2101, CARIBOO DISTRICT*

PLAN No **21 409**

Deposited in the Land Registry
Office at Prince George B.C.
this 14. day of MARCH 1974.

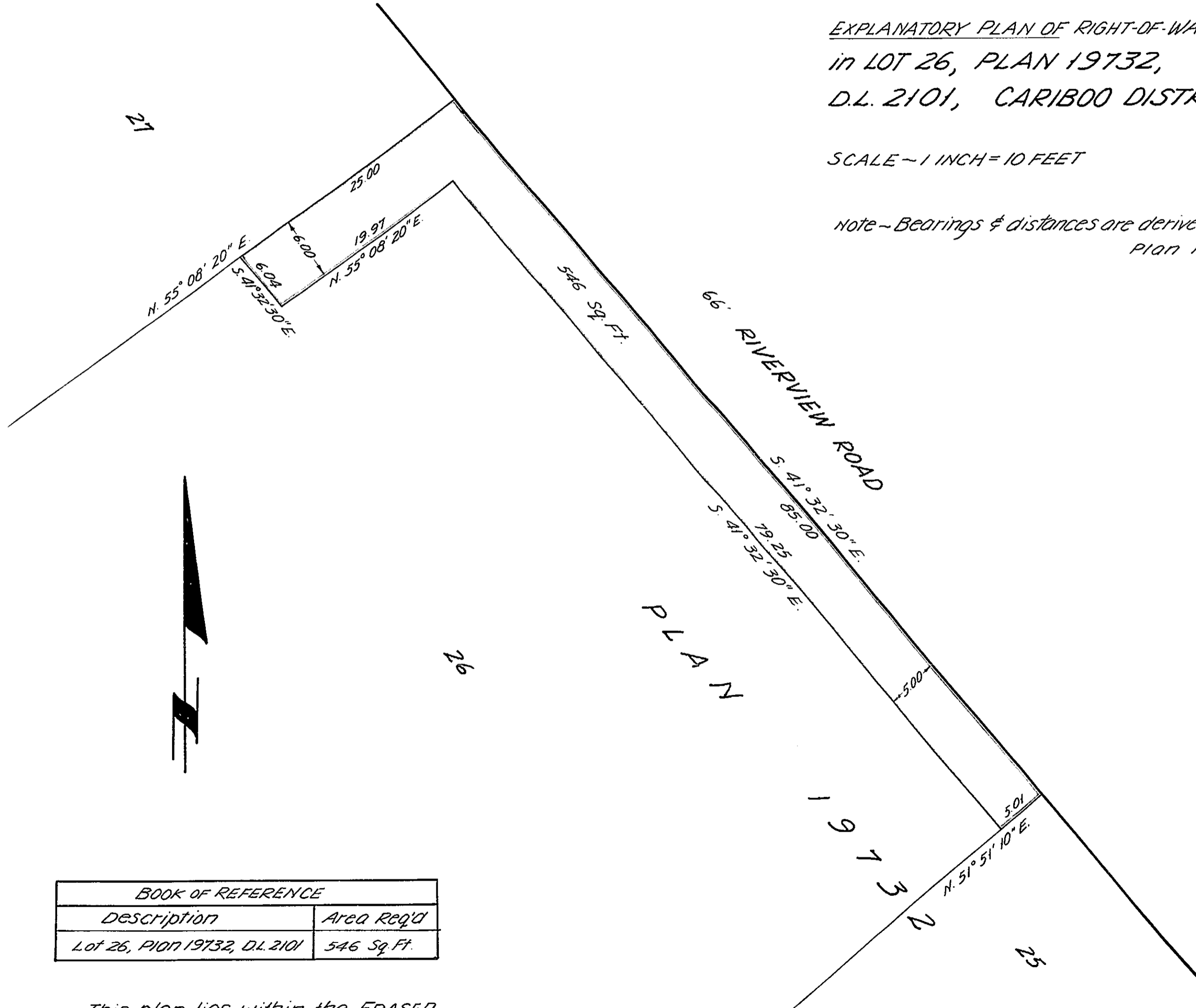
SCALE ~ 1 INCH = 10 FEET

E.T. SCHOOLCAY

Registrar

Per: *J. J. Finlayson*
(SURVEYOR L.R.O.)

Note - Bearings & distances are derived from
Plan 19732.



BOOK OF REFERENCE	
Description	Area Req'd
Lot 26, Plan 19732, D.L. 2101	546 Sq. Ft.

This plan lies within the FRASER
FORT GEORGE Regional District

CERTIFIED CORRECT
According to Land Registry Office records,
dated this 9th day of January, 1974.

A. Daniluck
A. Daniluck, B.C.L.S.

McWilliam, Whyte, Goble & Associates
B.C. Land Surveyors
Prince George-Kamloops-Smithers

REF. NO 74002-A