

PLAN of EASEMENT
 in LOT A , PLAN 21006
 BLOCK A , D.L. 751
 CARIBOO DISTRICT

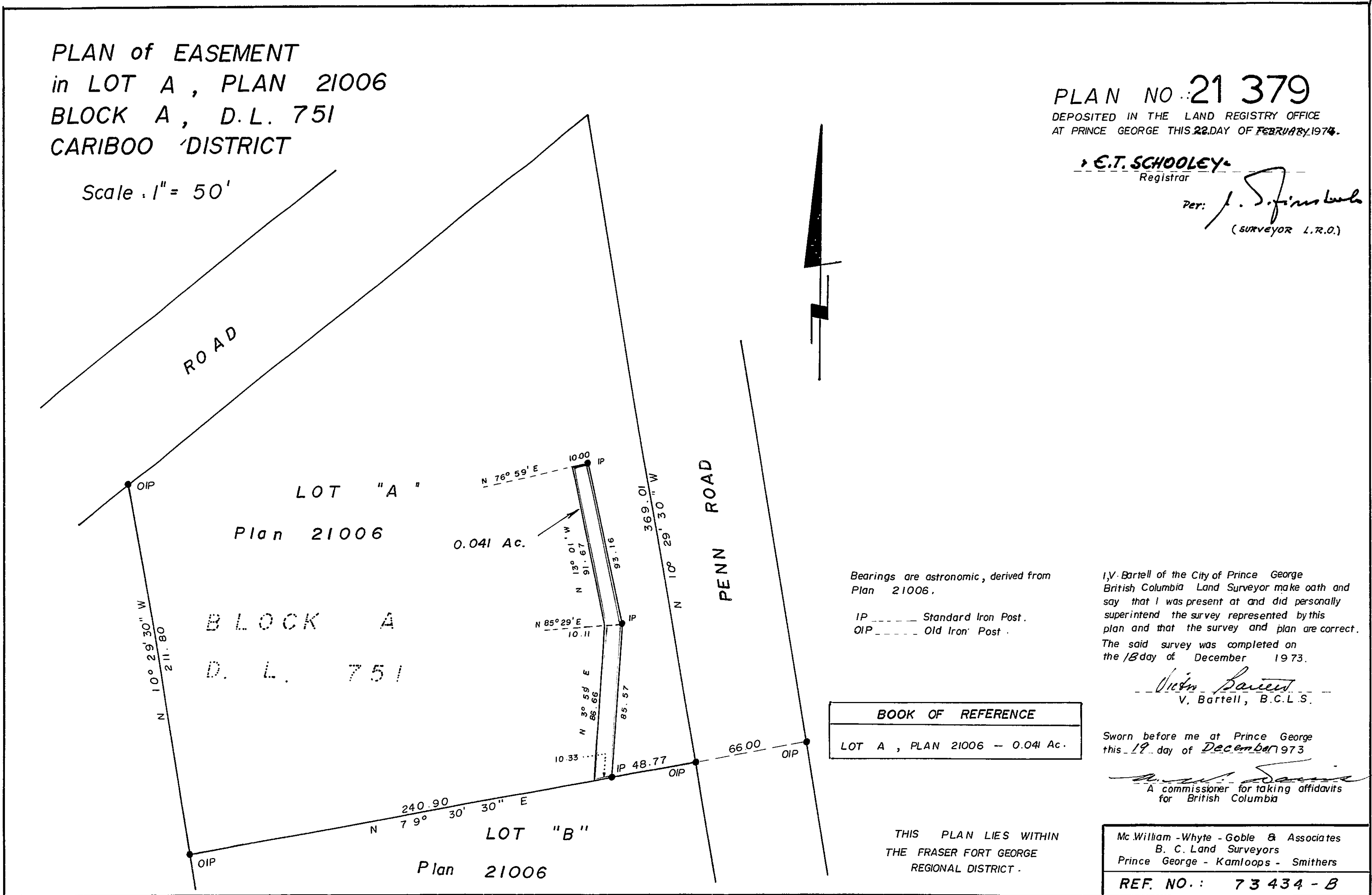
Scale 1" = 50'

PLAN NO.: 21 379

DEPOSITED IN THE LAND REGISTRY OFFICE
 AT PRINCE GEORGE THIS 22 DAY OF FEBRUARY 1974.

E.T. SCHOOLEY
 Registrar

Per: *J. S. Finnie*
 (SURVEYOR L.R.O.)



Bearings are astronomic, derived from
 Plan 21006.

IP ----- Standard Iron Post.
 OIP ----- Old Iron Post.

I, V. Bartell of the City of Prince George
 British Columbia Land Surveyor make oath and
 say that I was present at and did personally
 superintend the survey represented by this
 plan and that the survey and plan are correct.
 The said survey was completed on
 the 19 day of December 1973.

V. Bartell
 V. Bartell, B.C.L.S.

BOOK OF REFERENCE
 LOT A , PLAN 21006 - 0.041 Ac.

Sworn before me at Prince George
 this 19 day of December 1973

[Signature]
 A commissioner for taking affidavits
 for British Columbia

THIS PLAN LIES WITHIN
 THE FRASER FORT GEORGE
 REGIONAL DISTRICT.

McWilliam - Whyte - Goble & Associates
 B. C. Land Surveyors
 Prince George - Kamloops - Smithers
 REF. NO.: 73 434 - B

