

HC

RECEIVED

MAY 1 1974

CITY ASSESSOR
PRINCE GEORGE

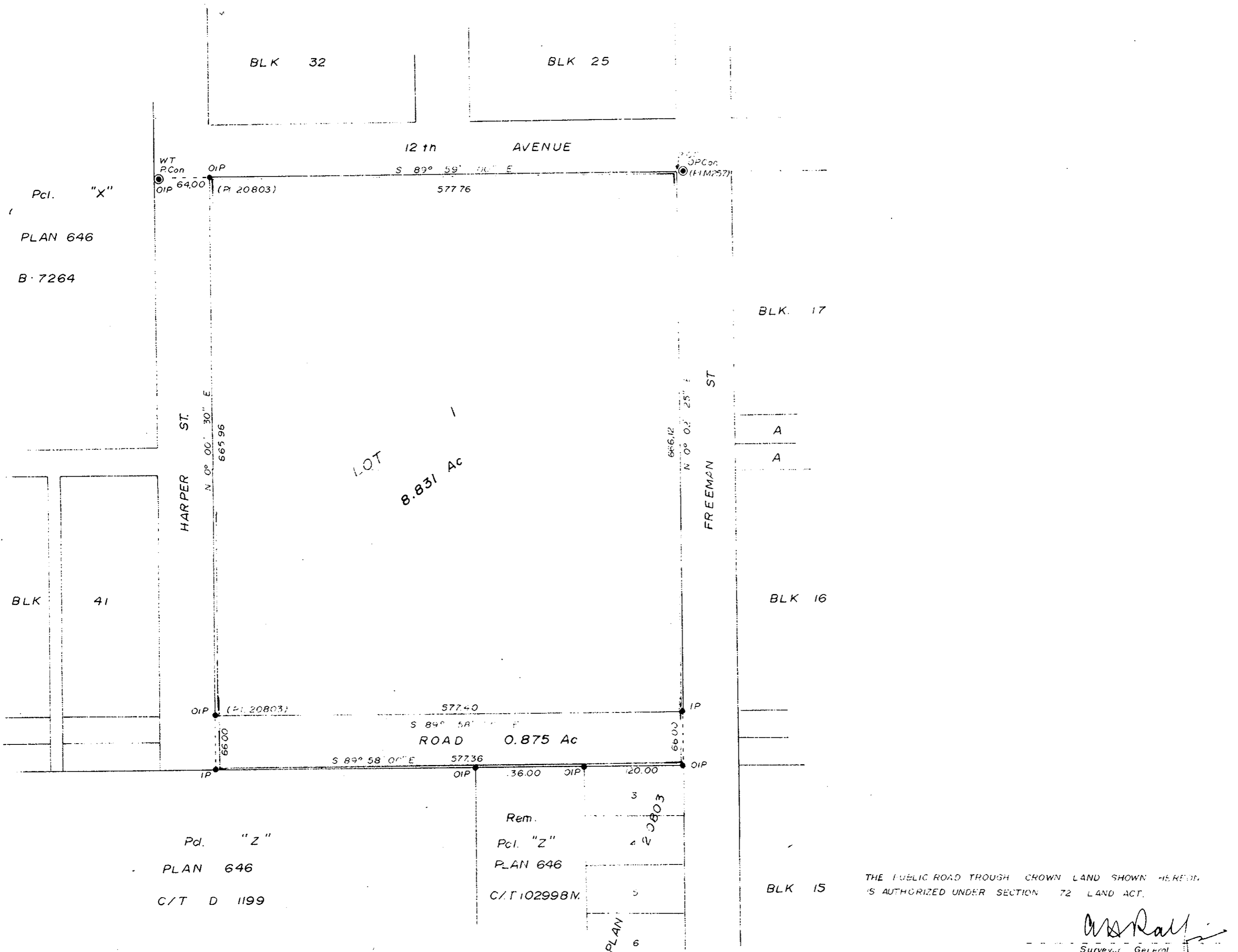
PLAN NO. 21 372

REGISTERED IN THE LAND REGISTRY OFFICE AT
PRINCE GEORGE B.C. 19. DAY OF FEBRUARY 1974.

PLAN OF SUBDIVISION
OF PARCEL A, (J. 3910.)
D.L. 1429, CARIBOO DISTRICT PLAN 646
AND PART OF D.L. 1429 see H 19886
SCALE: 1"=100'

E.T. SCHOOLEY

Per: *J. J. Finlayson*
(SURVEYOR L.R.O.)



THE PUBLIC ROAD TROUGH CROWN LAND SHOWN HEREON IS AUTHORIZED UNDER SECTION 72 LAND ACT.

Asst. Surveyor General
Victoria, B.C. December 12, 1973.

V.V. BARTELL OF THE CITY OF PRINCE GEORGE BRITISH COLUMBIA LAND SURVEYOR MAKE OATH AND SAY THAT I WAS PRESENT AT AND DID PERSONALLY SUPERINTEND THE SURVEY REPRESENTED BY THIS PLAN AND THAT THE SURVEY AND PLAN ARE CORRECT THE SAID SURVEY WAS COMPLETED ON THE 23 DAY OF AUGUST 1973

V.V. Bartell
V. BARTELL B.C.L.S.
SWORN BEFORE ME AT Prince George
THIS 23 DAY OF August 1973.

Commissioner
A COMMISSIONER FOR TAKING AFFIDAVITS
FOR BRITISH COLUMBIA

BEARINGS ARE ASTRONOMIC, DERIVED FROM PLAN 20803

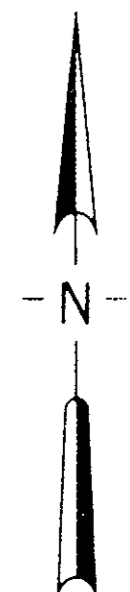
- P.C. STANDARD CONCRETE POST
- P.P. STANDARD PIPE POST
- S.C. STANDARD LAPED IRON POST
- I.P. STANDARD IRON POST
- B.T. BEARING TREE
- O.L. OBTAINING OLD
- W.T. DENOTING WITNESS

APPROVED UNDER THE LAND ACT BY THE CITY CLERK ON THE 3rd DAY OF DEC. 1973

C.E. O'Neil
CITY CLERK

THE SEAL OF THE CITY OF PRINCE GEORGE WAS AFFIXED HERETO IN THE PRESENCE OF

MAYOR *H. Moffat*
CITY CLERK *P. ...*



McWILLIAM - WHYTE - GOBLE & ASSOCIATES
B.C. LAND SURVEYORS
KAMLOOPS - SMITHERS - PRINCE GEORGE
REF. NO.: 73100-17-B