

EXPLANATORY PLAN OF EASEMENT THROUGH  
DISTRICT LOT 2100  
CARIBOO DISTRICT-BRITISH COLUMBIA

SCALE: 1" = 100'

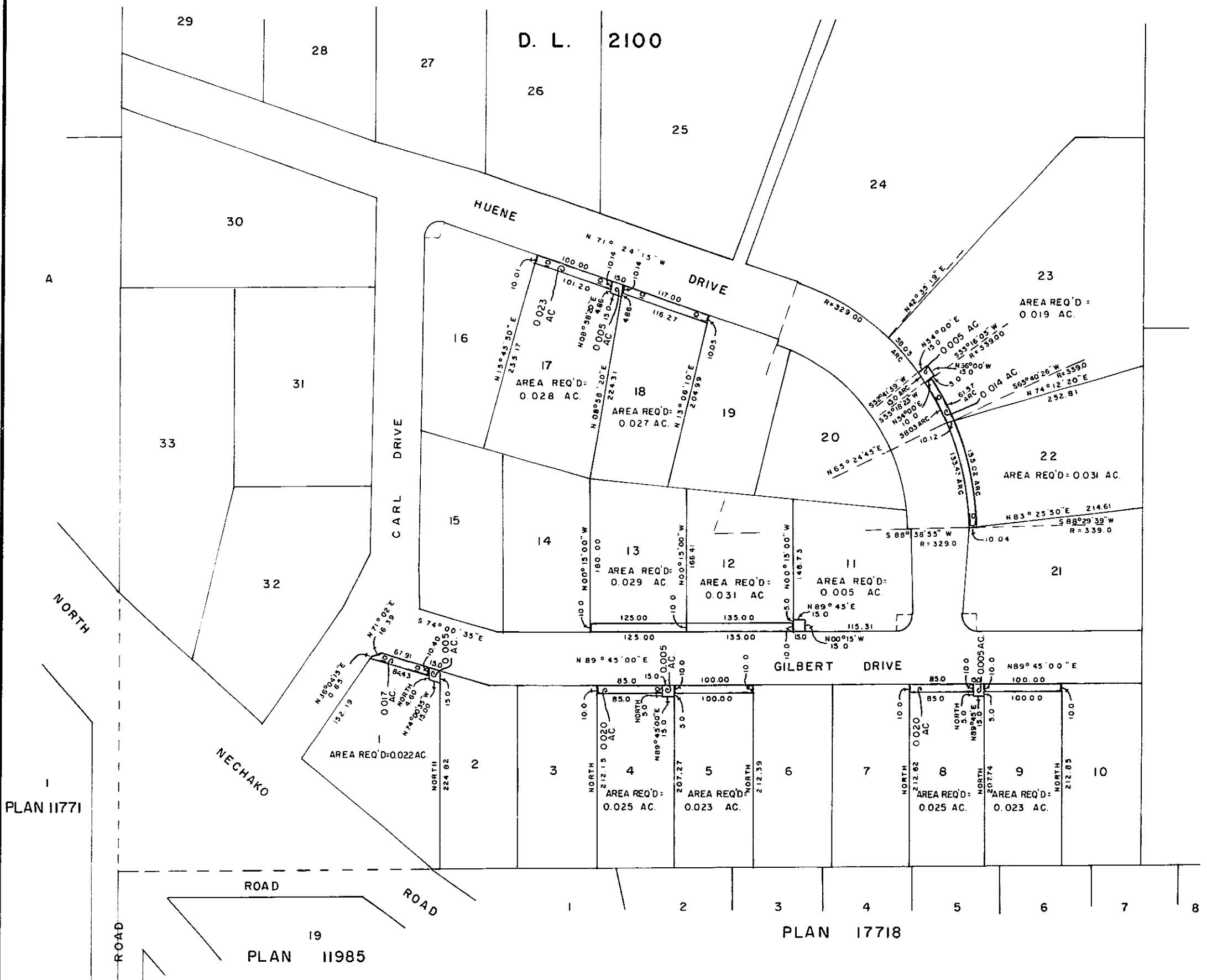
NOTE: Bearings are astronomic, derived from Plan 21188.

PARCEL	AREA REQ'D
LOT 1, PLAN 21188, D.L. 2100	0.022 AC.
LOT 4, PLAN 21188, D.L. 2100	0.025 AC.
LOT 5, PLAN 21188, D.L. 2100	0.023 AC.
LOT 8, PLAN 21188, D.L. 2100	0.025 AC.
LOT 9, PLAN 21188, D.L. 2100	0.023 AC.
LOT 11, PLAN 21188, D.L. 2100	0.005 AC.
LOT 12, PLAN 21188, D.L. 2100	0.031 AC.
LOT 13, PLAN 21188, D.L. 2100	0.029 AC.
LOT 17, PLAN 21188, D.L. 2100	0.028 AC.
LOT 18, PLAN 21188, D.L. 2100	0.027 AC.
LOT 22, PLAN 21188, D.L. 2100	0.031 AC.
LOT 23, PLAN 21188, D.L. 2100	0.019 AC.

PLAN No. **21344**  
Deposited in the Land Registry  
Office at Prince George, B.C. this  
5<sup>th</sup> day of FEBRUARY, 1974

**E.T. SCHOOLEY**  
Registrar

Per: *J. S. Finlayson*  
(Surveyor L.R.O.)



CERTIFIED CORRECT  
According to information  
shown on Plan 21188

*[Signature]*  
D.A. DUFFY, B.C.L.S.  
January 31st, 1974.

This plan lies within the Fraser-Fort  
George Regional District.

W.D. USHER & ASSOCIATES  
LAND SURVEYORS  
PRINCE GEORGE — B. C.  
4290A