

PLAN OF SUBDIVISION OF
 LOTS 5 & 6, PLAN 19518
 AND ADJACENT CLOSED MORICE STREET
 DISTRICT LOT 777
 CARIBOO DISTRICT-BRITISH COLUMBIA

SCALE: 1" = 50'

NOTE: Bearings are astronomic, derived from the north boundary of Lot 5 & 6, Plan 19518.

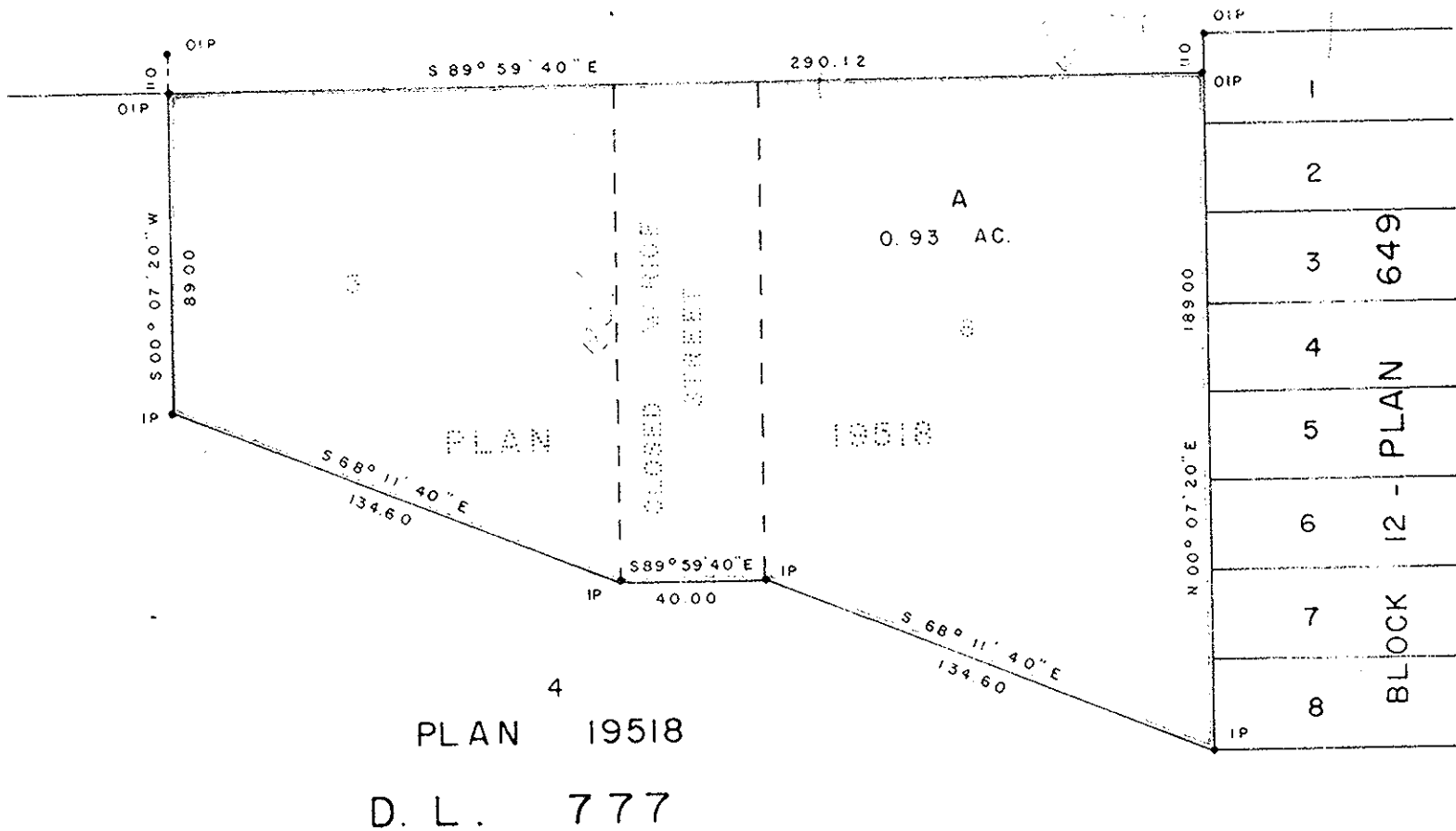
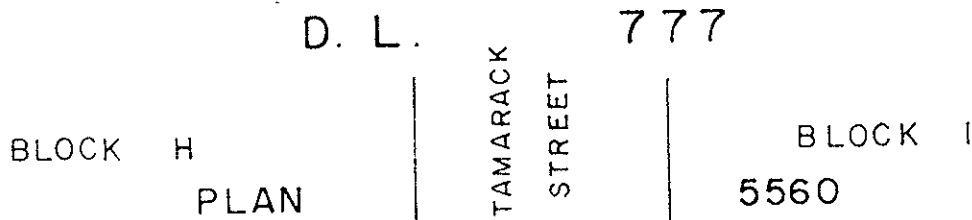
LEGEND: •OIP denotes an old iron pin found.
 •IP denotes an iron pin set.

PLAN N^o 21 321

Deposited in the Land Registry Office at Prince George, B.C. this 13th day of JANUARY, 1974

E.T. SCHOOLEY
 Registrar

PER: *A.S. Finlayson*
 (SURVEYOR L.R.O.)



I, DONALD A. DUFFY of the City of Prince George, a British Columbia Land Surveyor, make oath and say that I was present at and did personally superintend the survey represented by this plan and that the survey and plan are correct. The said survey was completed on the 9 day of NOV, 1973

CEREBRAL PALSY ASSOCIATION
 OF PRINCE GEORGE AND DISTRICT

J.M. McErmid
 Pres.

Approved under the Land Registry Act this 12th day of DEC, 1973

C.E. Oest
 Approving Officer, City of Prince George

This plan lies within the Fraser-Fort George Regional District.

Sworn before me this 13 day of JAN, 1974

A Commissioner for taking Affidavits for British Columbia

W.D. USHER & ASSOCIATES
 LAND SURVEYORS
 PRINCE GEORGE - B.C.
 FZ 74 5637