

PLAN of SUBDIVISION
of PART of LOT 1, PLAN 9467
and PART of LOT 8, PLAN 17582
D. L. 2611
CARIBOO DISTRICT

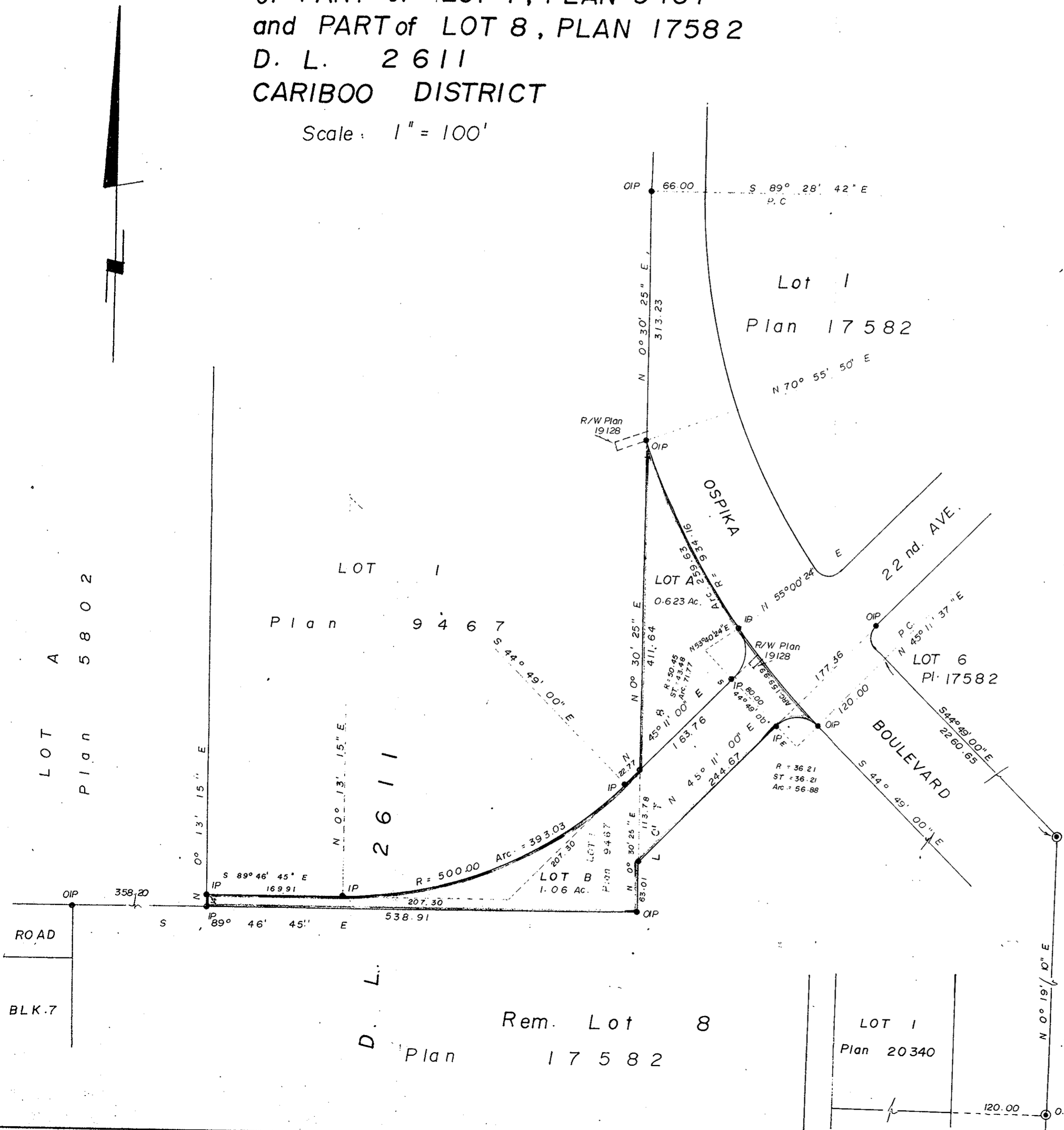
Scale: 1" = 100'

PLAN No 21 294

Deposited in the Land Registry Office at
PRINCE GEORGE on the 11th day of JANUARY, 1974.

E.T. SHOOLEY
Registrar

Per: J. S. Finlayson
(Surveyor L.R.O.)



Bearings are astronomic and are derived from
PLAN 20340

- P.con Standard Concrete Post.
- P.Rock Standard Rock Post.
- PP Standard Pipe Post.
- I.P Standard Iron Post.
- P Wooden Post.
- L.P Lead Plug.
- Denoting "Old"
- WT. Denoting "Witness"
- CIP Capped Iron Post

Approved under the Land Registry Act
on the 13th day of DEC. 1973.

C. E. Platt
Approving Officer

This plan lies within the FRASER
FORT GEORGE Regional District.

I, V. BARTELL, of the CITY OF PRINCE GEORGE
British Columbia Land Surveyor, make oath and
say that I was present at and did personally
superintend the survey represented by this
plan and that the survey and plan are correct.

Victoria S. Bartell
V. BARTELL, B.C.L.S.

Sworn before me at PRINCE GEORGE
this 12th day of December 1973.

J. C. G. ...
A commissioner for taking affidavits
for British Columbia.

The seal of the City of Prince George
was affixed hereto in the presence of

Mayor: *[Signature]*

City Clerk: *[Signature]*

McWilliam—Whyte—Goble & Associates
B.C. LAND SURVEYORS
PRINCE GEORGE | SMITHERS | KAMLOOPS
REF N: 73 100-19 B

L.E. 158