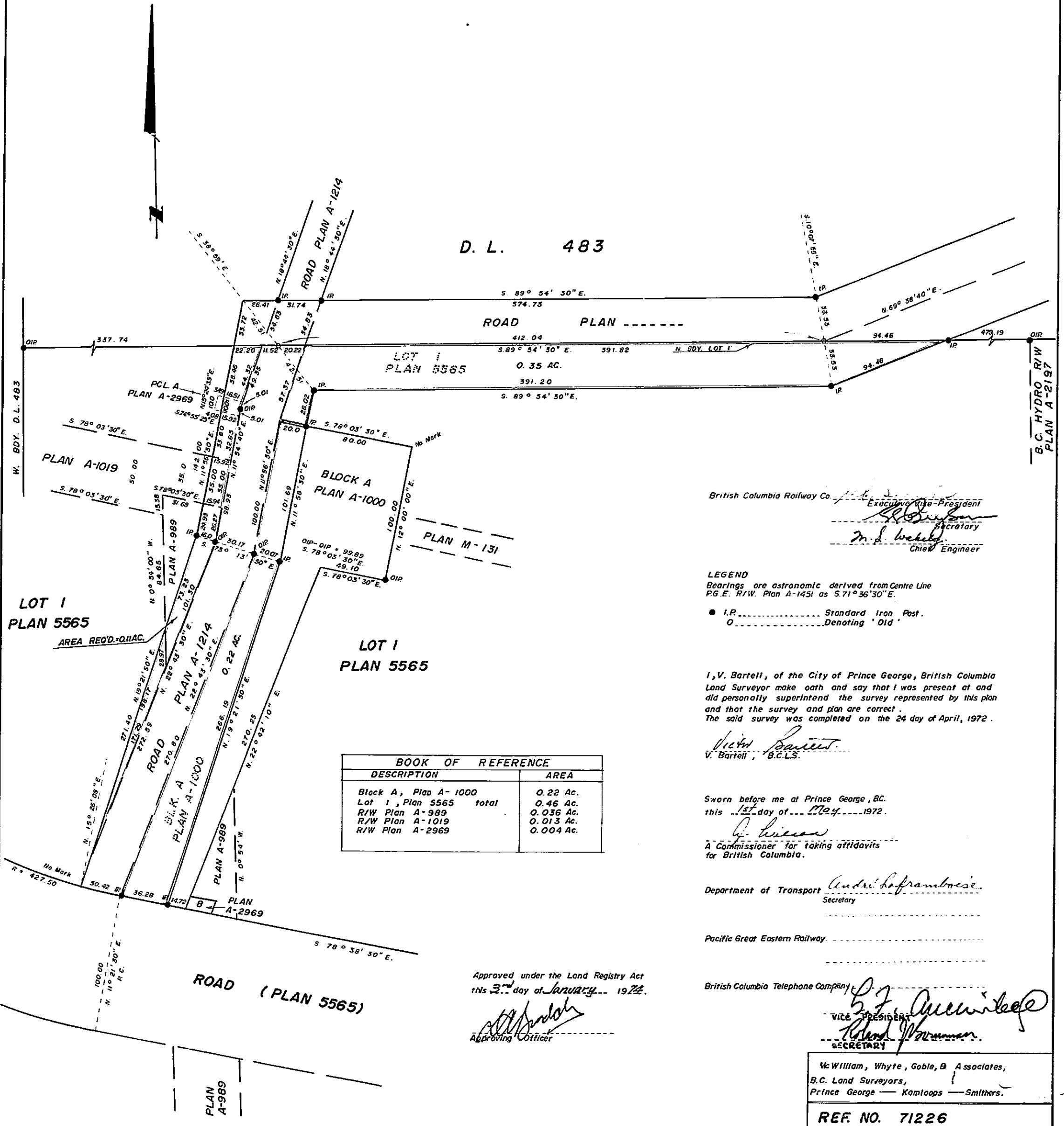


PLAN OF RIGHT-OF-WAY OF ROAD WIDENING
 IN LOT 1, PLAN 5565 AND BLOCK A, PLAN A-1000,
 DISTRICT LOT 483, CARIBOO DISTRICT.

Scale: 1" = 50'

PLAN NO. 21 286
 Deposited in the Land Registry Office at
 Prince George this 7th day of JANUARY, 1972.

E.T. SCHOOLEY,
 Registrar
 per: *J. J. Smith*
 (SURVEYOR L.R.O.)



British Columbia Railway Co. *J. J. Smith*
 Executive Vice-President
 Secretary
 Chief Engineer

LEGEND
 Bearings are astronomic derived from Centre Line
 P.G.E. R/W. Plan A-1451 as 5.71° 36' 30" E.
 ● I.P. Standard Iron Post.
 ○ Denoting 'Old'

I, V. Bartell, of the City of Prince George, British Columbia
 Land Surveyor make oath and say that I was present at and
 did personally superintend the survey represented by this plan
 and that the survey and plan are correct.
 The said survey was completed on the 24 day of April, 1972.

V. Bartell
 V. Bartell, B.C.L.S.

BOOK OF REFERENCE	
DESCRIPTION	AREA
Block A, Plan A-1000	0.22 Ac.
Lot 1, Plan 5565 total	0.46 Ac.
R/W Plan A-989	0.036 Ac.
R/W Plan A-1019	0.013 Ac.
R/W Plan A-2969	0.004 Ac.

Sworn before me at Prince George, B.C.
 this 15th day of May, 1972.

G. Hinson
 A Commissioner for taking affidavits
 for British Columbia.

Department of Transport *André Laframboise*
 Secretary

Pacific Great Eastern Railway

British Columbia Telephone Company
B. J. McWilliam
 VICE PRESIDENT
Robert W. ...
 SECRETARY

McWilliam, Whyte, Goble, & Associates,
 B.C. Land Surveyors,
 Prince George — Kamloops — Smithers.

REF. NO. 71226

Approved under the Land Registry Act
 this 3rd day of January, 1972.
[Signature]
 Approving Officer