

file plan file etc

RECEIVED

FEB 21 1974

CITY ASSESSOR
PRINCE GEORGE

PLAN OF SUBDIVISION OF
LOTS 5, 6 & 7, BLOCK 6, PLAN 721
DISTRICT LOT 1426
CARIBOO DISTRICT - BRITISH COLUMBIA

SCALE: 1" = 50'

NOTE: Bearings are astronomic, derived from the
north boundary of Lot B, Plan 19336.

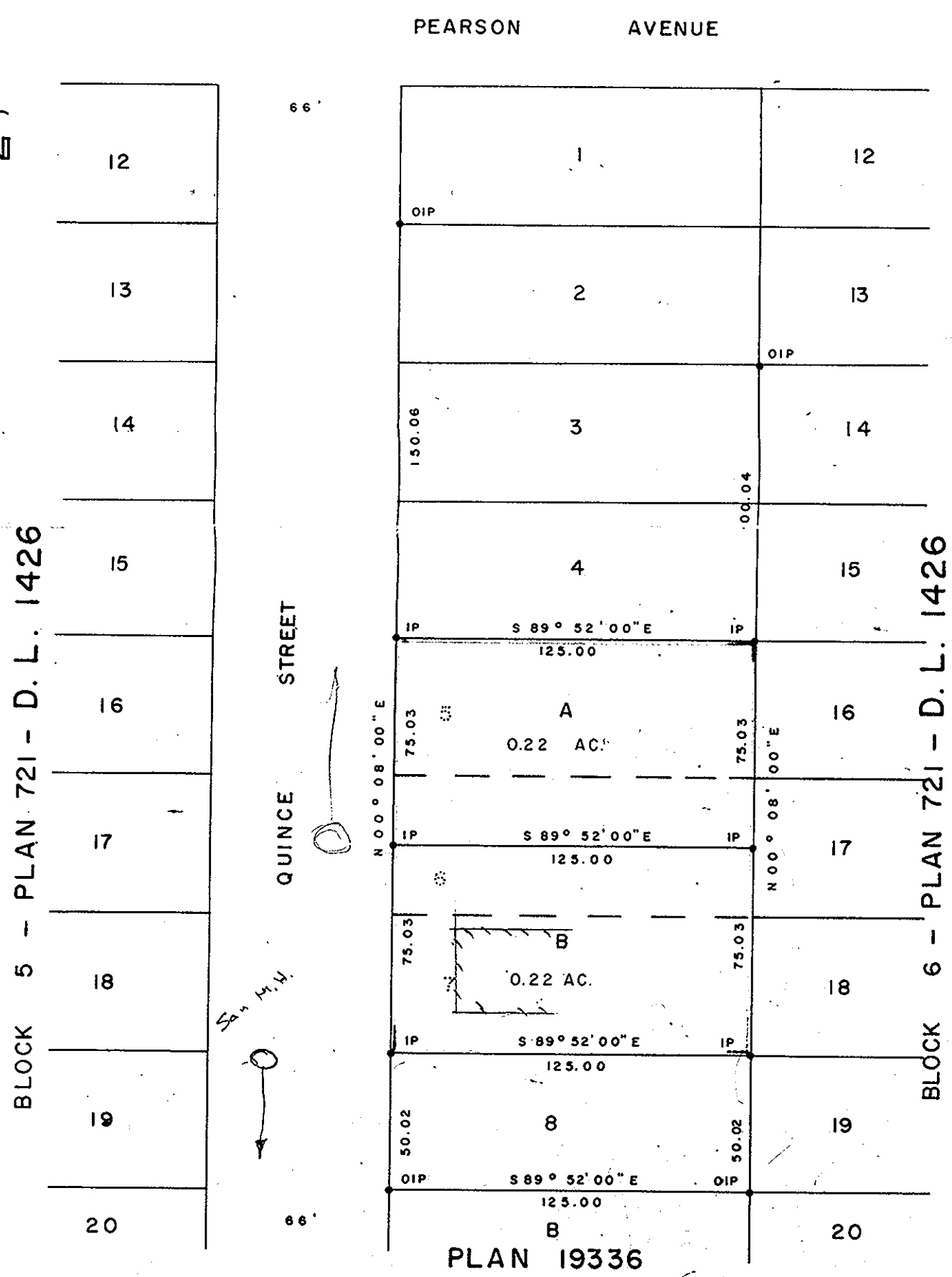
LEGEND: •OIP denotes an old iron pin found.
•IP denotes an iron pin set.

PLAN N^o **21 259**

Deposited in the Land Registry
Office at Prince George, B.C. this
6 day of DECEMBER, 1973.

E. T. SCHOOLEY
Registrar

per: *J. S. Finlay*
(SURVEYOR L.R.O.)



*elevation
2635' Pot.
1964 mount on block*

I, DONALD A. DUFFY of the City of Prince George,
a British Columbia Land Surveyor, make oath and say
that I was present at and did personally superintend
the survey represented by this plan and that the survey
and plan are correct. The said survey was completed
on the 6 day of OCT, 1973.

[Signature]
B.C.L.S.

Sworn before me this 18
day of OCT, 1973.

[Signature]
A. Commissioner for taking Affidavits
for British Columbia.

Owner *[Signature]*

Witness *[Signature]*

Owner *[Signature]*

Witness *[Signature]*

Approved under the Land Registry Act
this 17th day of OCT, 1973

[Signature]
Approving Officer, City of Prince George

This plan lies within the Fraser-Fort George
Regional District.