

PLOTTED

NM NN

PLAN No 21 256

Deposited in the Land Registry Office at PRINCE GEORGE on the 4. day of December 1973.

E.T. SCHOOLEY Registrar

Per: J. Spinnlich (Surveyor L.R.O.)

PLAN of SUBDIVISION of PART of THE NORTH EAST 1/4 of DISTRICT LOT 954 CARIBOO DISTRICT

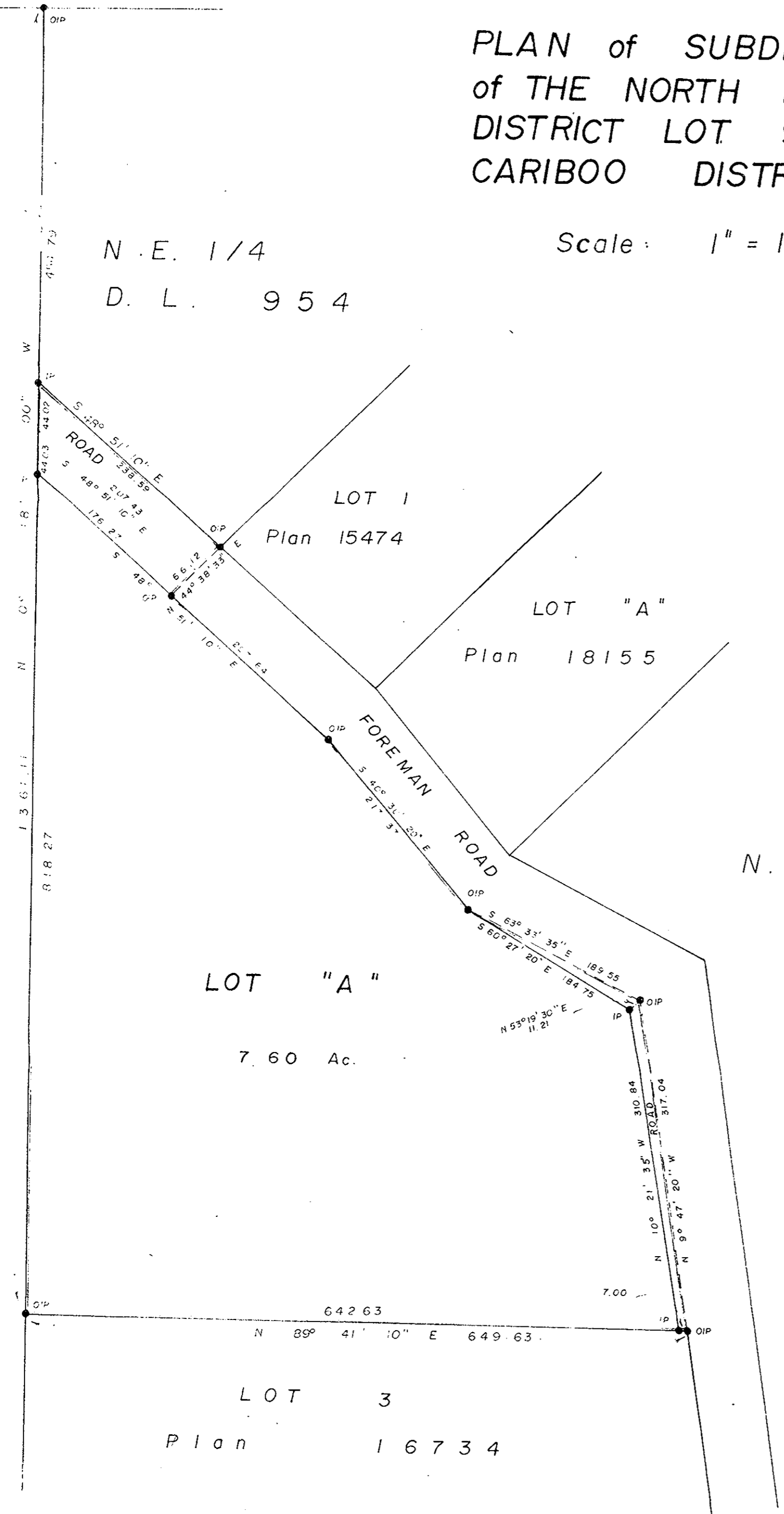
Scale: 1" = 100'

N.E. 1/4 D.L. 954

N.E. 1/4

D.L. 954

N.W. 1/4, D.L. 954



- Bearings are astronomic and are derived from WEST BOY OF N.E. 1/4, D.L. 954, SHOWN ON PLAN 16734 AS N 0° 18' 00" W
- P.con. Standard Concrete Post.
 - P.Rock Standard Rock Post.
 - P.P. Standard Pipe Post.
 - I.P. Standard Iron Post.
 - P. Wooden Post.
 - L.P. Lead Plug.
 - Denoting "Old"
 - WT. Denoting "Witness"
 - CIP. Capped Iron Post.

Approved under the Land Registry Act on the 22. day of November 1973.

Approving Officer Dep. of Highways

This plan lies within the FRASER FORT GEORGE Regional District.

I, D. KEOWN of the CITY OF PRINCE GEORGE British Columbia Land Surveyor, make oath and say that I was present at and did personally superintend the survey represented by this plan and that the survey and plan are correct

The said survey was completed on the 3. day of November 1973.

D. KEOWN, B.C.L.S.

Sworn before me at PRINCE GEORGE this 27. day of November 1973.

A commissioner for taking affidavits for British Columbia.

Owner Joseph E. Smith

Witness Ed. McQuig

McWilliam—Whyte—Goble & Associates
 B.C. LAND SURVEYORS
 PRINCE GEORGE | SMITHERS | KAMLOOPS

REF No: 67 113