

PLAN OF SUBDIVISION OF PART OF
S.W. 1/4 DISTRICT LOT 2433
CARIBOO DISTRICT- BRITISH COLUMBIA

SCALE: 1" = 100'

NOTE: Bearings are astronomic, derived from the south boundary of Lot A, Plan 14477.

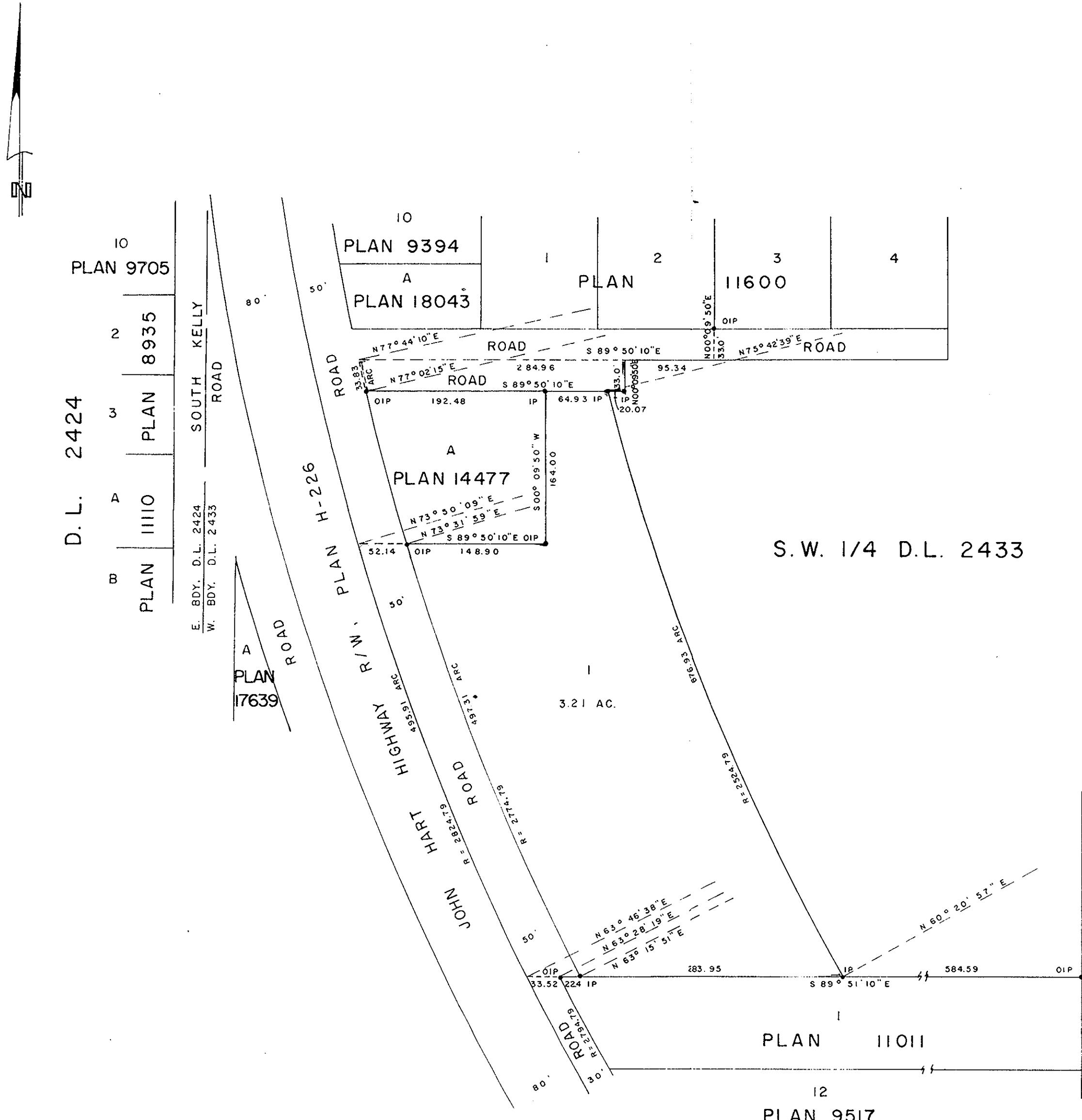
LEGEND: •OIP denotes an old iron pin found.
•IP denotes an iron pin set.

PLAN No 21 247

Deposited in the Land Registry Office at Prince George, B.C. this 3. day of DECEMBER, 1973

E.T. SCHOOLEY
Registrar
Per: *A. J. Finlay*
(SURVEYOR L.R.O.)

Re: Clearance L.C.A.
see #131564



A - PLAN 15312
D. L. 2433

I hereby certify that the lands within this plan were not zoned for agricultural or farm use under a by-law, substiting immediately prior to the 21st of December 1972, of a municipal city or regional district.

A. J. Finlay Date: 29 Nov. 73
Approving Officer - Dept. of Highways

Approved under the Land Registry Act this 29th day of NOVEMBER, 1973.

A. J. Finlay
Approving Officer, Dept. of Highways.

This plan lies within the Fraser-Fort George Regional District.

I, DONALD A. DUFFY of the City of Prince George, a British Columbia Land Surveyor, make oath and say that I was present at and did personally superintend the survey represented by this plan and that the survey and plan are correct. The said survey was completed on the 5th day of NOV., 1973.

Donald A. Duffy
B.C.L.S.

Sworn before me this 13th day of Nov., 1973

J. E. Kelly
A Commissioner for taking Affidavits for British Columbia.

GLENVIEW ESTATES LTD.

James George
President