

RECEIVED

JAN 14 1974

CITY ASSESSOR
PRINCE GEORGE

PLAN OF SUBDIVISION OF
LOT B, PLAN 6630 EXCEPT PLAN 17566, &
PARCEL A, (PLAN 19935) BLOCK 30, PLAN 1268
DISTRICT LOT 343
CARIBOO DISTRICT - BRITISH COLUMBIA

SCALE: 1" = 100'

PLAN N^o 21 229

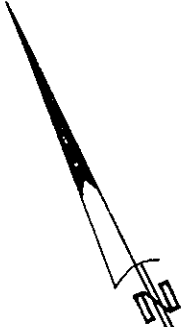
Deposited in the Land Registry
Office at Prince George, B.C. this
14 day of NOVEMBER, 1973.

NOTE: Bearings are astronomic, derived from the south
boundary of First Avenue as shown on Plan 1268.

LEGEND: •OIP denotes an old iron pin found.
•IP denotes an iron pin set.

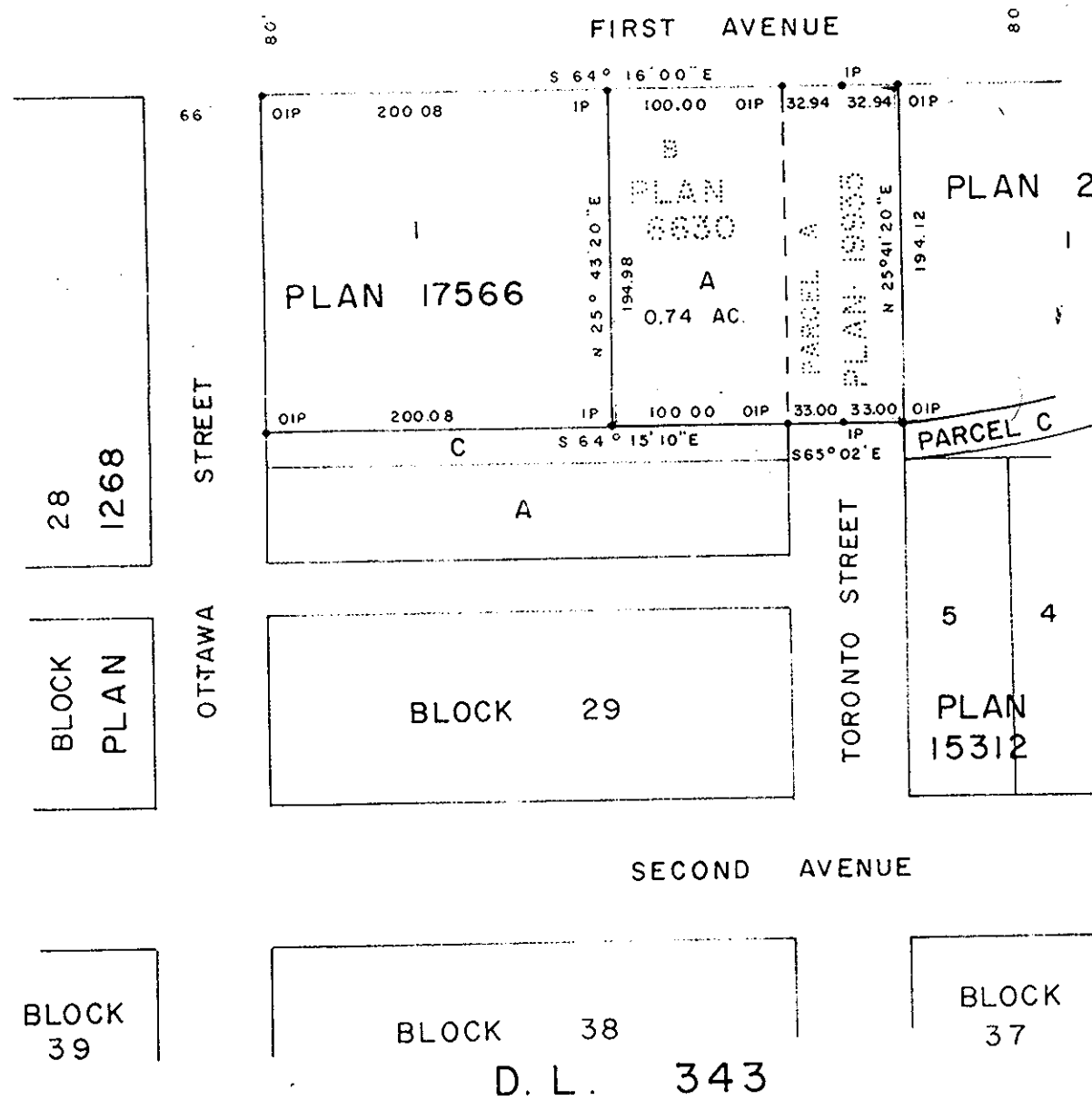
E.T. SCHOOLEY
Registrar

Per: *J. J. Finckel*
(SURVEYOR L.R.O.)



CANADIAN NATIONAL RAILWAY R/W

615
1st



W.
8927

I, DONALD A. DUFFY of the City of Prince George,
a British Columbia Land Surveyor, make oath and say
that I was present at and did personally superintend
the survey represented by this plan and that the survey
and plan are correct. The said survey was completed
on the 29 day of Dec. 1972.

CROSS-ATLANTIC ENTERPRISES LTD.

Approved under the Land Registry Act
this 8th day of Nov. 1973

[Signature]
PRES

C. E. Olat
Approving Officer, City of Prince George

Sworn before me this 23
day of Dec. 1973

B.C.L.S.

This plan lies within the Fraser - Fort George
Regional District.

[Signature]
A Commissioner for taking Affidavits
for British Columbia

W. D. USHER & ASSOCIATES
LAND SURVEYORS
PRINCE GEORGE B.C.
FJ 40 4842