

PLAN OF RIGHT-OF-WAY THROUGH  
 LOTS 4, 5 & 9, PLAN 21221  
 DISTRICT LOT 2423  
 CARIBOO DISTRICT-BRITISH COLUMBIA

SCALE: 1" = 100'

NOTE: Bearings are astronomic, derived from the west boundary of Lot 9, as shown on Plan 21221.

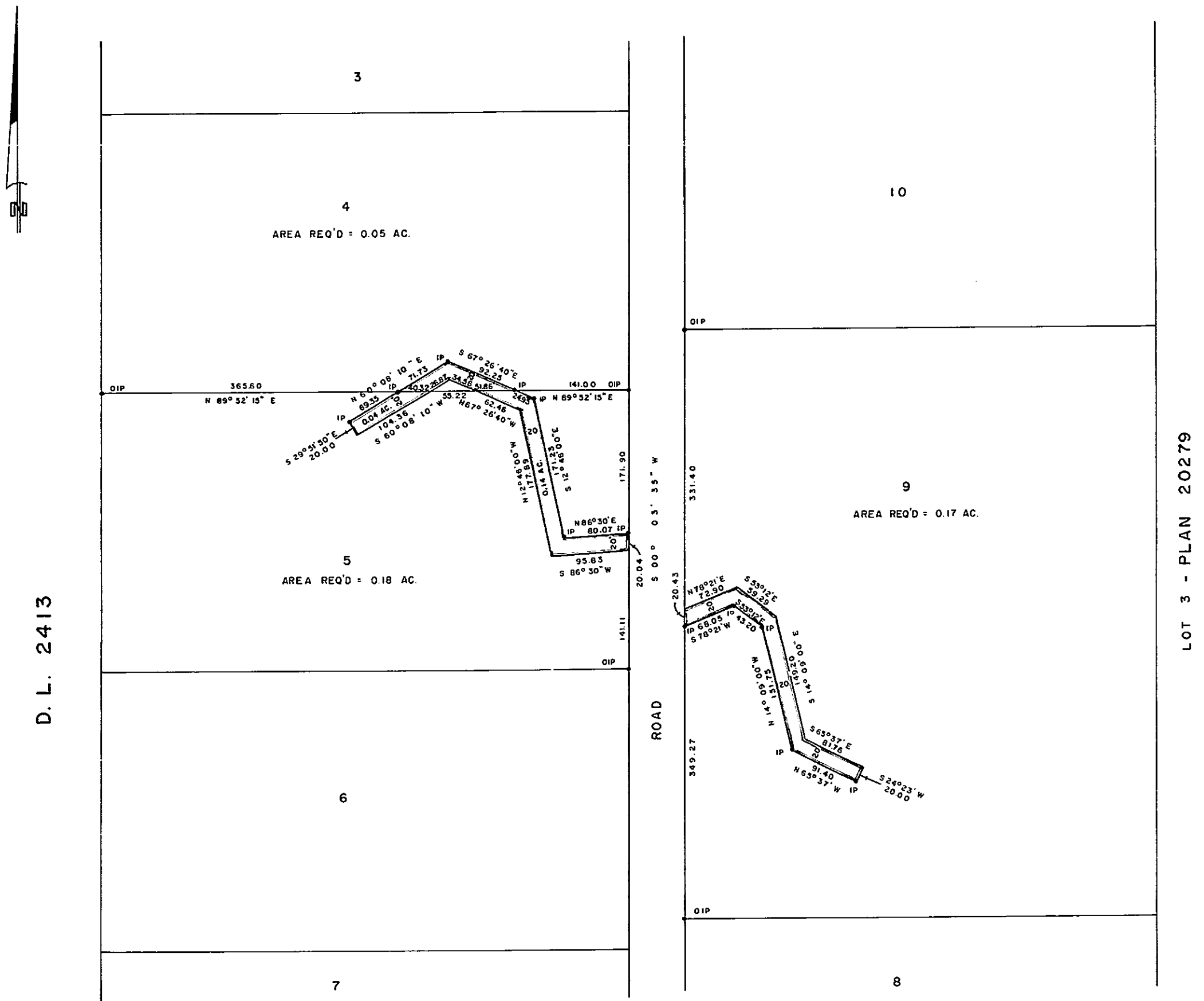
LEGEND: • OIP denotes an old iron pin found.  
 • IP denotes an iron pin set.

PLAN N<sup>o</sup> 21 222

Deposited in the Land Registry Office at Prince George, B.C. this 9<sup>th</sup> day of NOVEMBER, 1973.

E.T. SCHODLEY  
 Registrar

For: J. Spink  
 (Surrey L.R.O.)



I, DONALD A. DUFFY of the City of Prince George, a British Columbia Land Surveyor, make oath and say that I was present at and did personally superintend the survey represented by this plan and that the survey and plan are correct. The said survey was completed on the 5th day of September, 1973.

*[Signature]*  
 B.C.L.S.

Sworn before me this 6th day of September, 1973.

*[Signature]*  
 A Commissioner for taking Affidavits for British Columbia.

Approved under the Land Registry Act this 1<sup>st</sup> day of NOVEMBER, 1973.

*[Signature]*  
 Approving Officer, Dept. of Highways.

This plan lies within the Fraser-Fort George Regional District.