

RECEIVED

JAN 14 1974

CITY ASSESSOR  
PRINCE GEORGE

PLAN № **21 216**

Deposited in the Land Registry  
Office at Prince George, B.C. this  
day of \_\_\_\_\_, 19\_\_

**E.T. SCHOOLEY**  
Registrar

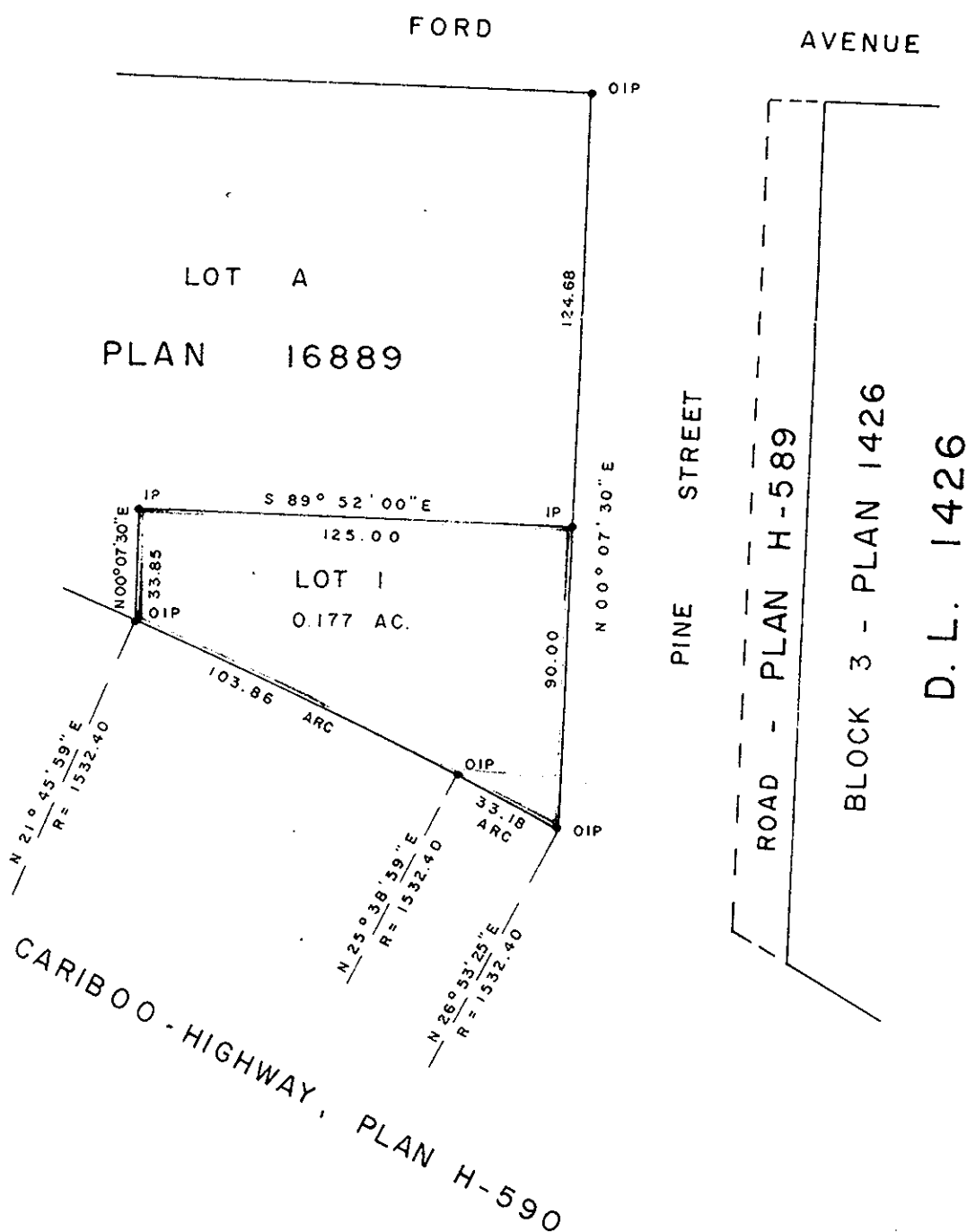
PER: *J. J. Finlay*  
(SURVEYOR L.R.O.)

PLAN OF SUBDIVISION OF PART OF  
LOT A, PLAN 16889  
DISTRICT LOT 1426  
CARIBOO DISTRICT - BRITISH COLUMBIA

SCALE: 1" = 50'

NOTE: Bearings are astronomic, derived from the  
east boundary of Lot A, Plan 16889.

LEGEND: • OIP denotes an old iron pin found.  
• IP denotes an iron pin set.



I, DONALD A. DUFFY of the City of Prince George,  
a British Columbia Land Surveyor, make oath and say  
that I was present at and did personally superintend  
the survey represented by this plan and that the survey  
and plan are correct. The said survey was completed  
on the 3rd day of OCT, 1973

*[Signature]*  
B.C.L.S.

Sworn before me this 17  
day of OCT, 1973

*[Signature]*  
A Commissioner for taking Affidavits  
for British Columbia.

Owner \_\_\_\_\_

Witness \_\_\_\_\_

Approved under the Land Registry Act  
this 17th day of OCT, 1973

*[Signature]*  
Approving Officer, City of Prince George

This plan lies within the Fraser-Fort George  
Regional District.

W. D. USHER & ASSOCIATES  
LAND SURVEYORS  
PRINCE GEORGE - B.C.  
GU 44 5553