

PLAN OF HIGHWAY RIGHT-OF-WAY THROUGH
DISTRICT LOT 1542
CARIBOO DISTRICT—BRITISH COLUMBIA

SCALE: 1" = 100'

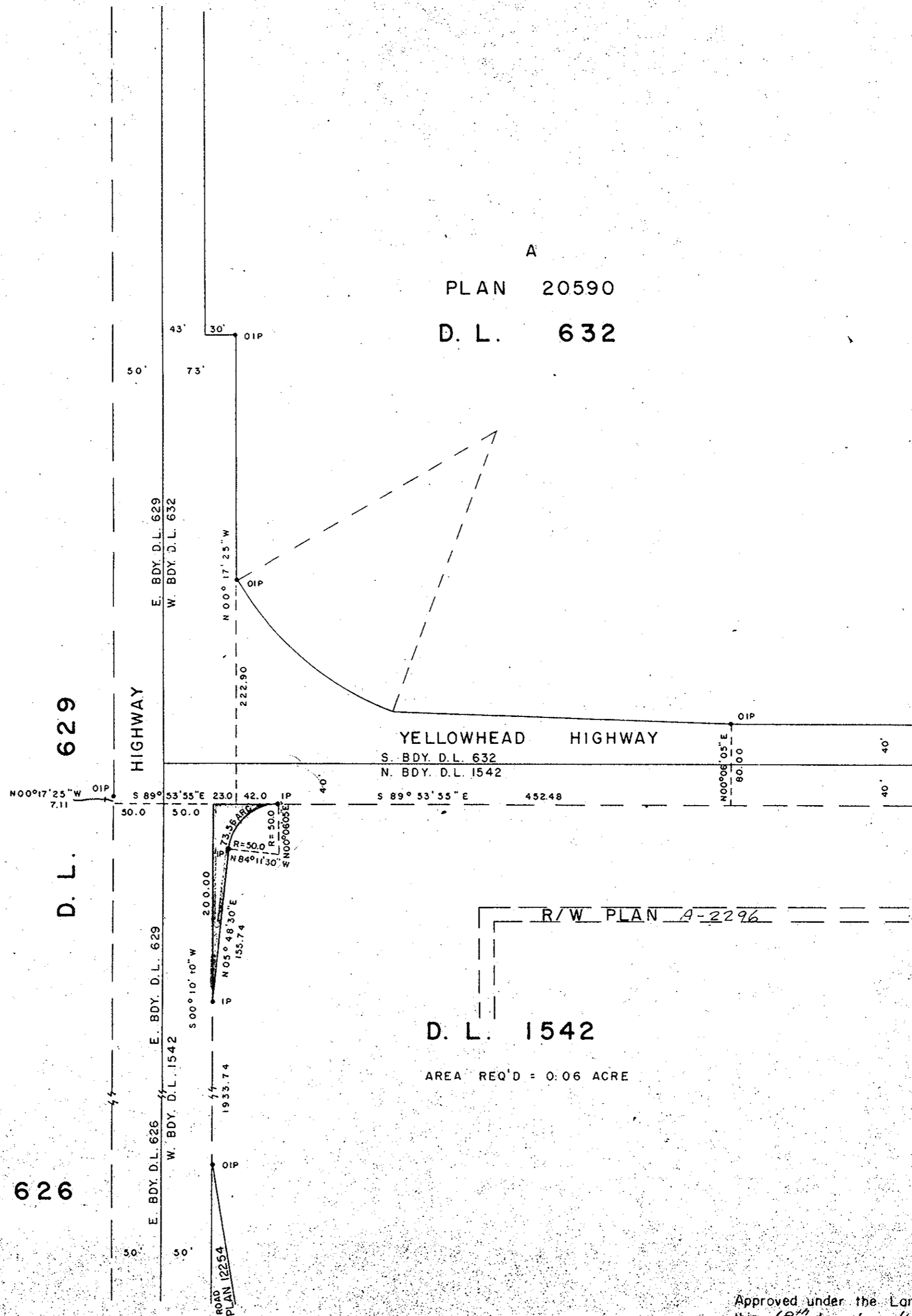
NOTE: Bearings are astronomic, derived from the West boundary of Lot A, Plan 20590, D.L. 632.

LEGEND: •OIP denotes an old iron pin found.
•IP denotes an iron pin set.

PLAN N^o 21212
Deposited in the Land Registry
Office at Prince George, B.C. this
5th day of NOV., 1973

E. T. SCHOOLEY
Registrar

PER: J. Finlayson
(Surveyor & L.R.O.)



I, DONALD A. DUFFY of the City of Prince George, a British Columbia Land Surveyor, make oath and say that I was present at and did personally superintend the survey represented by this plan and that the survey and plan are correct. The said survey was completed on the 20th day of June, 1973.

[Signature]
B.C.L.S.

Sworn before me this 11th day of JULY, 1973

[Signature]
A Commissioner for Taking Affidavits
for British Columbia.

Approved under the Land Registry Act
this 18th day of JULY, 1973

Approving Officer, Dept. of Highways.

This plan lies within the Fraser-Fort George
Regional District.