

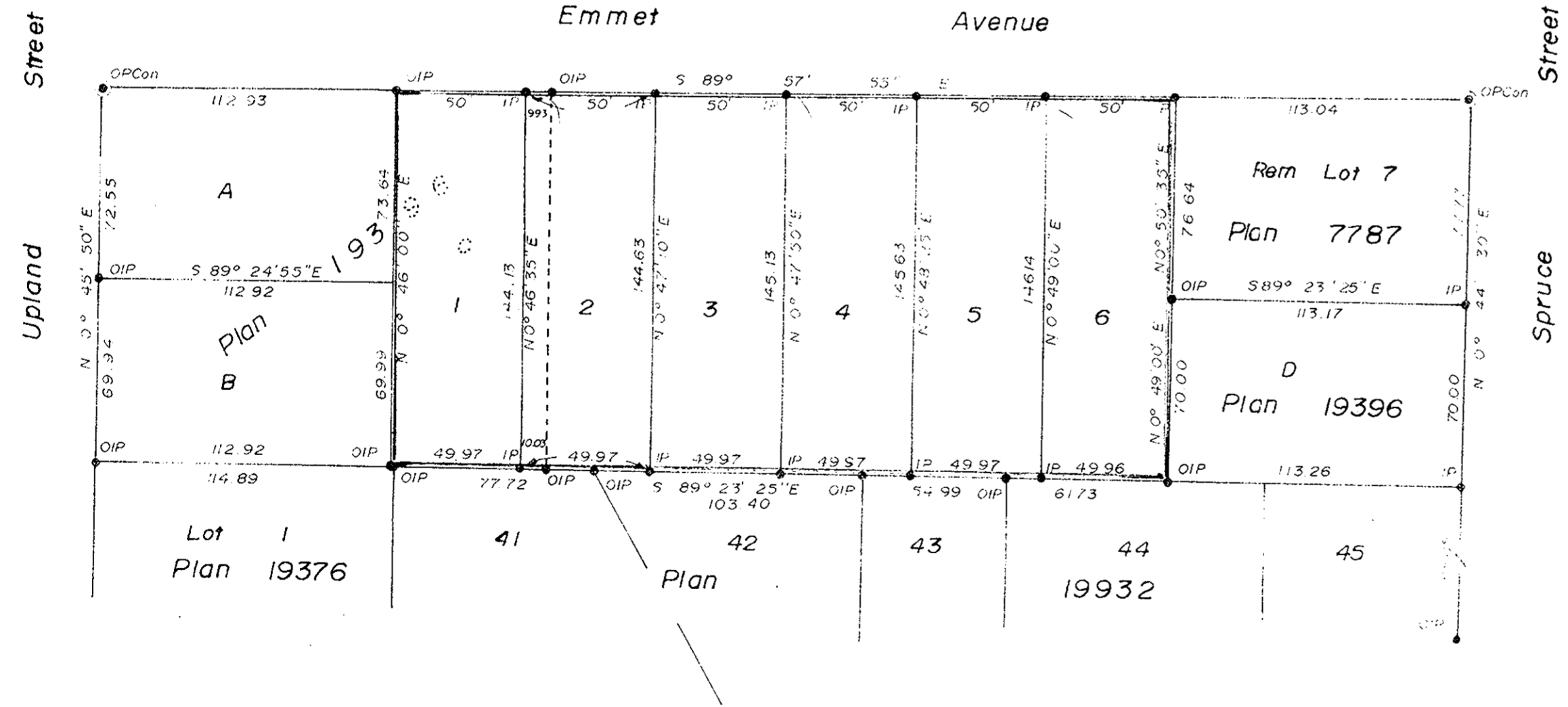
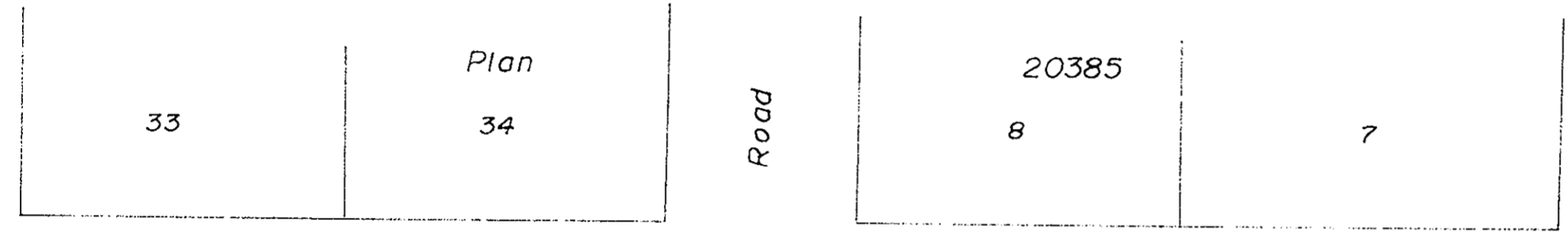
PLAN No 21 200

Deposited in the Land Registry Office at
Prince George on the 31. day of OCTOBER, 1973.

E. T. SCHOOLEY
Registrar.

per: *(Signature)*
(SURVEYOR L.R.O.)

Plan of Subdivision of lot "C", Plan 19396
and part of lot '7', Plan 7787, D.L. 913
Cariboo District
Scale 1" = 50"



- Bearings are astronomic and are derived from
South body Emmet Street
shown as S 89° 57' 55" E (Plan 20385).
- P.con. Standard Concrete Post.
 - P.Rock Standard Rock Post.
 - P.P. Standard Pipe Post.
 - I.P. Standard Iron Post.
 - P. Wooden Post.
 - L.P. Lead Plug.
 - Denoting "Old"
 - WT. Denoting "Witness"
 - CIP. Capped Iron Post

I, V. Bartell, of the City of Prince George,
British Columbia Land Surveyor, make oath and
say that I was present at and did personally
superintend the survey represented by this
plan and that the survey and plan are correct.
The said survey was completed on
the 20. day of July, 1973.

(Signature)
V. Bartell, B.C.L.S.

Sworn before me at Prince George
this 24. day of July, 1973.

(Signature)
A commissioner for taking affidavits
for British Columbia.

Approved under the Land Registry Act
on the 12th day of SEPT. 1973.

(Signature)
Approving Officer

Owner *(Signature)*

This plan lies within the Fraser
Prin-George Regional District.

Witness

RECEIVED

DEC 7 1973

CITY ASSESSOR
PRINCE GEORGE

| |
|-------------------------------------|
| McWilliam—Whyte—Gable & Associates |
| B.C. LAND SURVEYORS |
| PRINCE GEORGE SMITHERS KAMLOOPS |
| REF N: 73235 |