

PLAN OF SUBDIVISION OF PART OF  
 S.W. 1/4 OF S.E. 1/4  
**DISTRICT LOT 632**  
 CARIBOO DISTRICT - BRITISH COLUMBIA

SCALE: 1" = 200'

NOTE: Bearings are astronomic, derived from the south boundary of the S.W. 1/4 of S.E. 1/4 D.L. 632, as shown on Plan 11071.

LEGEND: •OIP denotes an old iron pin found.  
 •IP denotes an iron pin set.  
 OBT denotes old bearing tree.

PLAN N<sup>o</sup> **21 180**

Deposited in the Land Registry Office at Prince George, B.C. this 19 day of October, 1973.

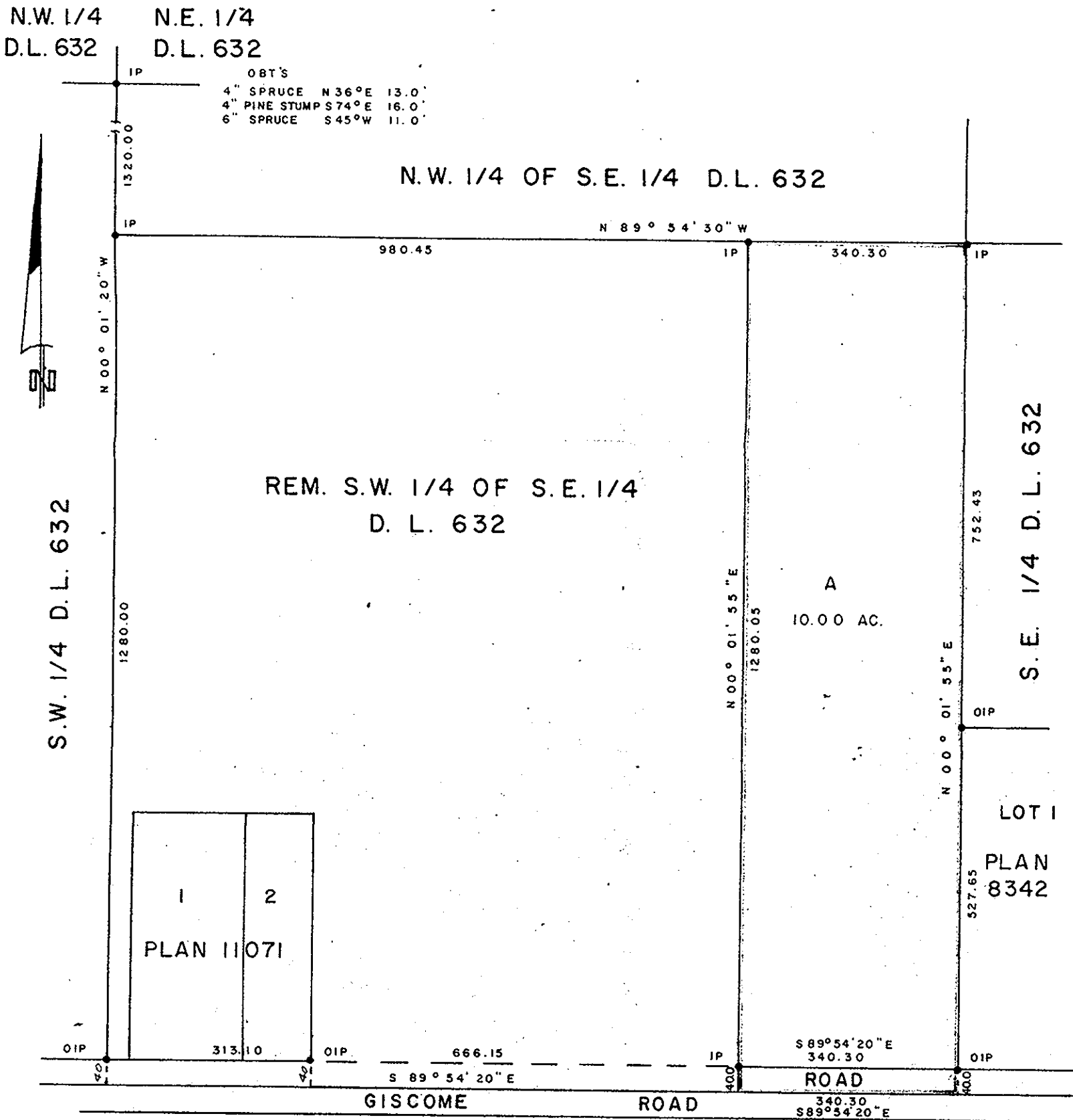
**C.T. SCHOOLEY**

Registrar

Per:

*J. S. Finlayson*  
 (Surveyor L.R.O.)

Re: Clearance L.C.A.  
 see H 26984



I, DONALD A. DUFFY of the City of Prince George, a British Columbia Land Surveyor, make oath and say that I was present at and did personally superintend the survey represented by this plan and that the survey and plan are correct. The said survey was completed on the 15 day of August, 1973

*[Signature]*  
 B.C.L.S.

Sworn before me this 22 day of August, 1973

*[Signature]*  
 Commissioner for taking Affidavits for British Columbia.

D. L. 1543

Owner

*[Signature]*

Witness

*[Signature]*  
 Notary Public

Approved under the Land Registry Act this 27 day of Sept., 1973

*[Signature]*  
 Approving Officer, Dept. of Highways.

This plan lies within the Fraser-Fort George Regional District.