

22021.001-  
.003

PLAN OF SUBDIVISION OF PART OF  
S. 1/2 OF N. 1/2 OF S.E. 1/4 OF  
DISTRICT LOT 2425  
CARIBOO DISTRICT - BRITISH COLUMBIA

SCALE: 1" = 100'

NOTE: Bearings are astronomic, derived from the East  
boundary of D.L. 2425, as shown on Plan 15214.

LEGEND: •OIP denotes an old iron pin found.  
•IP denotes an iron pin set.

PLAN No 21174

Deposited in the Land Registry  
Office at Prince George, B.C. this  
16. day of OCTOBER, 1973.

E.T. SCHOOLEY  
Registrar

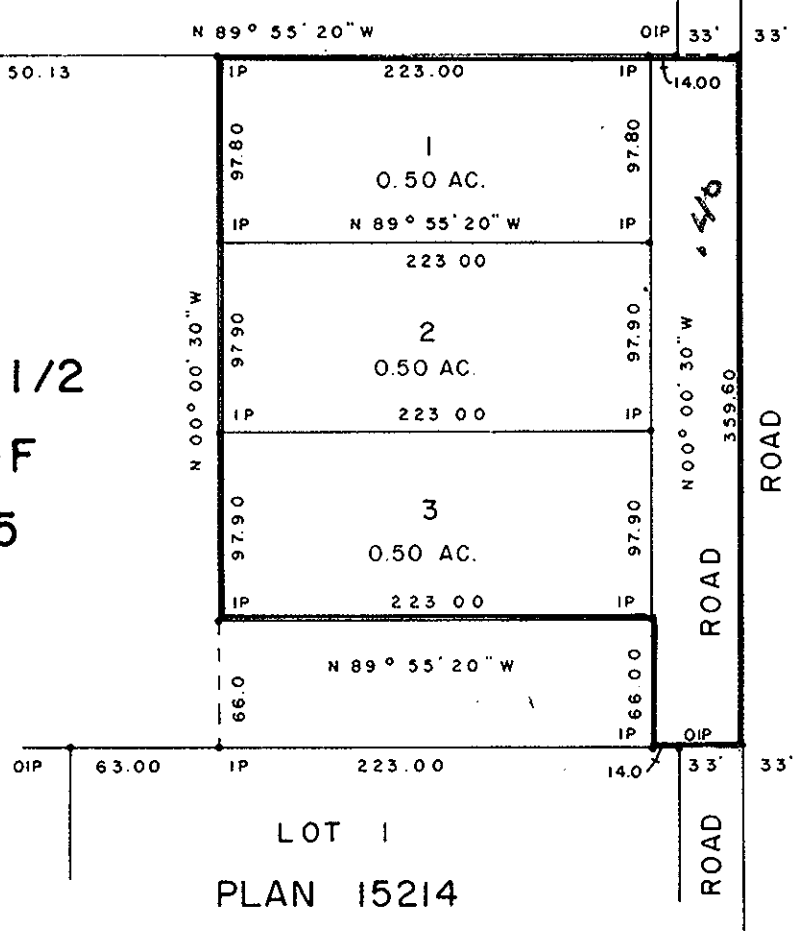
VMB 12/12/73

1.90 AC

N. 1/2 OF N. 1/2  
S.E. 1/4 OF  
D.L. 2425

LOT 1  
PLAN 16134

S. 1/2 OF N. 1/2  
S.E. 1/4 OF  
D.L. 2425



29

28

27

26

25

24

23

22

S.W. 1/4 D.L. 2432

Re-approved under the  
Land Registry Act  
this 15<sup>th</sup> day of October  
1973.  
Approving Officer - Dept. of Hwy's

ESTATE OF  
DAVID ROWATT

ADMINISTRATRIX  
WITNESS

I, DONALD A. DUFFY of the City of Prince George,  
a British Columbia Land Surveyor, make oath and say  
that I was present at and did personally superintend  
the survey represented by this plan and that the survey  
and plan are correct. The said survey was completed  
on the 9th day of May, 1973.

Edward Shuey  
Owner MORTGAGEE

H. Norton Dillon  
Witness

Wayne F. Zed  
Witness AS TO BOTH SIGNATURES

Approved under the Land Registry Act  
this 23<sup>rd</sup> day of JULY, 1973.

Approving Officer, Dept. of Highways.

Sworn before me this 23<sup>rd</sup>  
day of JULY, 1973

Shirley Anne Zed  
Witness AS TO BOTH SIGNATURES

This plan lies within the Fraser - Fort George  
Regional District.

A Commissioner for taking Affidavits  
for British Columbia.

W. D. USHER & ASSOCIATES  
LAND SURVEYORS  
PRINCE GEORGE - B.C.  
GG 3 32008