

PLAN OF EASEMENT THROUGH  
LOT A, PLAN 21100  
**DISTRICT LOT 936**  
CARIBOO DISTRICT - BRITISH COLUMBIA

SCALE: 1" = 100'

NOTE: Bearings are astronomic, derived from the north boundary of Lot A, Plan 21100.

LEGEND: •OIP denotes an old iron pin found.  
•IP denotes an iron pin set.

PLAN N<sup>o</sup> 21168

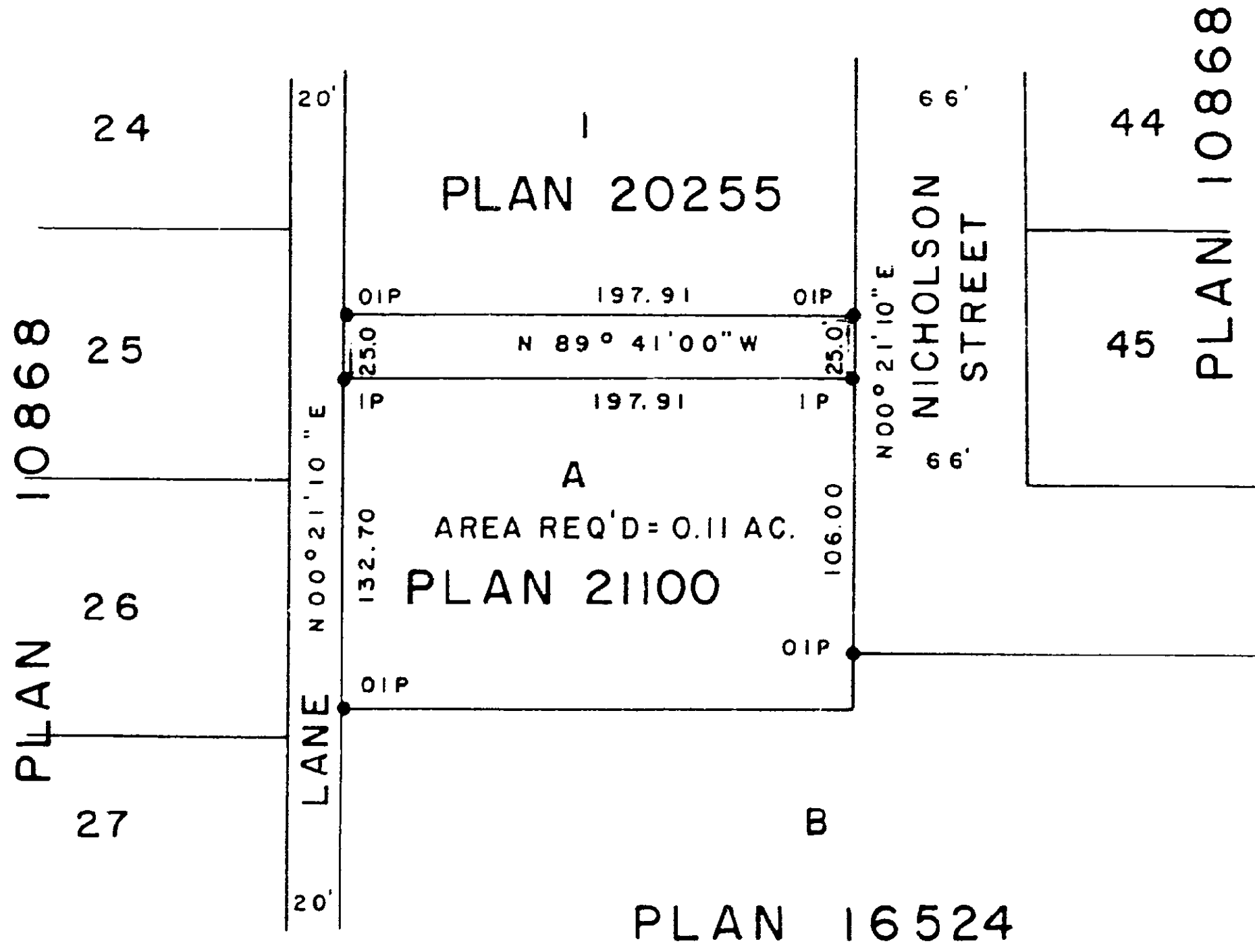
Deposited in the Land Registry Office at Prince George, B.C. this 14 day of OCT., 1973.

Registrar F. T. SCHOOLEY

PER: J. Spink  
(SURVEYOR L.R.O.)



**D. L. 936**



I, DONALD A. DUFFY of the City of Prince George, a British Columbia Land Surveyor, make oath and say that I was present at and did personally superintend the survey represented by this plan and that the survey and plan are correct. The said survey was completed on the 5th day of JULY, 1973.

*[Signature]*  
B.C.L.S.

Sworn before me this 29 day of AUGUST, 1973

This plan lies within the Fraser-Fort George Regional District.

*[Signature]*  
A Commissioner for taking Affidavits for British Columbia.