

PLAN OF SUBDIVISION OF PART OF THAT PART OF THE
 N. W. 1/4 OF N. E. 1/4 OF
 DISTRICT LOT 2432 LYING N. & W. OF THE HART HIGHWAY
 CARIBOO DISTRICT, BRITISH COLUMBIA

PLAN NO **21 160**

Deposited in the Land Registry
 Office at Prince George, B.C. this
 day of _____, 19__

SCALE: 1" = 200'

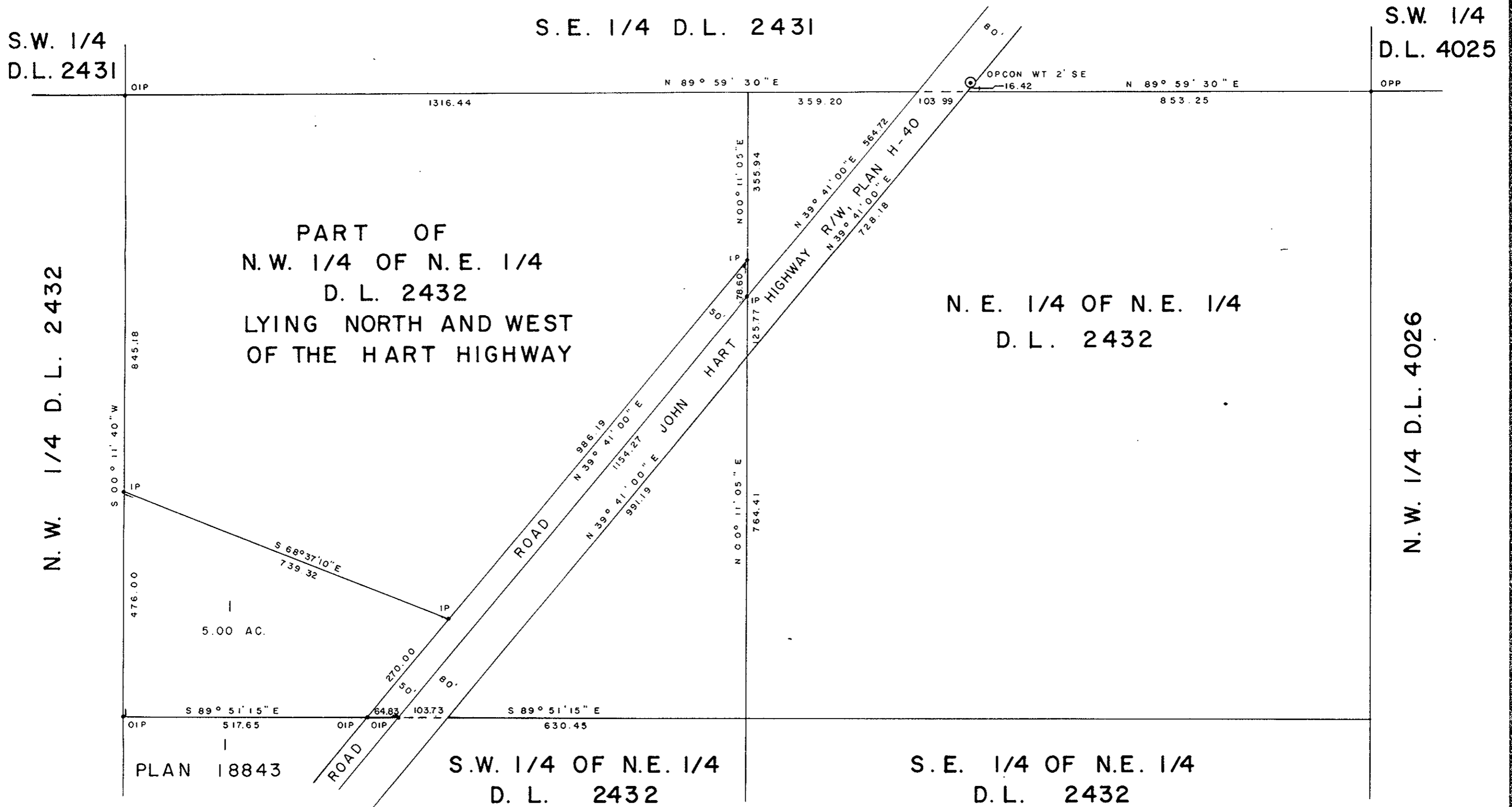
NOTE: Bearings are astronomic, derived from the East boundary
 of John Hart Highway R/W, Plan H-40, as shown on
 Plan 18843.

LEGEND: ⊙OPCON denotes an old concrete monument found.
 •OIP denotes an old iron pin found.
 •IP denotes an iron pin set.

E.T. SCHOOLEY
 Registrar

Per: *J. J. [Signature]*
 (SURVEYOR L.R.O.)

Re: Clearance L.C.A.
 see D.F. H25689



I, DONALD A. DUFFY of the City of Prince George,
 a British Columbia Land Surveyor, make oath and say
 that I was present at and did personally superintend
 the survey represented by this plan and that the survey
 and plan are correct. The said survey was completed
 on the 3RD day of April, 1973

Owner _____

Witness _____

Approved under the Land Registry Act
 this 22nd day of AUGUST, 1973.

[Signature]
 Approving Officer, Dept. of Highways.

Sworn before me this 23rd
 day of April, 1973

B.C.L.S.

A Commissioner for taking Affidavits
 for British Columbia.

This plan lies within the Fraser-Fort George
 Regional District.