

PLAN OF SUBDIVISION OF PART OF  
 LOT 1 - PLAN 17175  
 DISTRICT LOT 4045  
 CARIBOO DISTRICT - BRITISH COLUMBIA

PLAN N<sup>o</sup> 21 129

Deposited in the Land Registry  
 Office at Prince George, B.C. this  
 19<sup>th</sup> day of SEPTEMBER, 1973.

SCALE: 1" = 100'

NOTE: Bearings are astronomic, derived from the  
 East Boundary of Lot 1, Plan 17175.

LEGEND: • OIP denotes an old iron pin found.  
 • IP denotes an iron pin placed on this survey.

E. T. SCHOOLEY,  
 Registrar

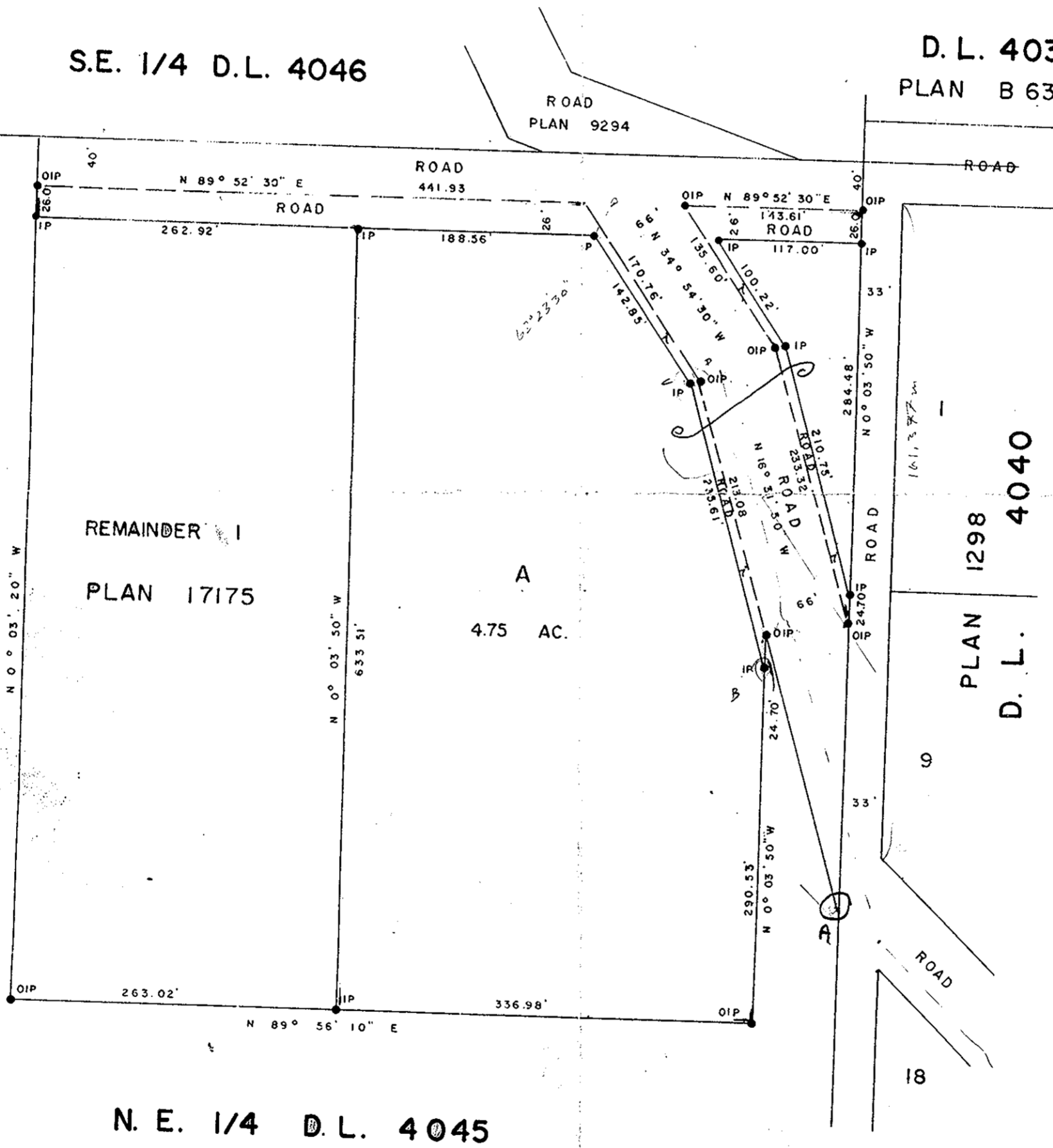
per: *J. Finlayson*  
 (SURVEYOR L.R.O.)

24.384

S.E. 1/4 D.L. 4046

D.L. 4039  
 PLAN B 6366

N.E. 1/4 D.L. 4045



24.384  
 89.5230  
 12.1075  
 72.47

N.E. 1/4 D.L. 4045

I, DONALD A. DUFFY of the City of Prince George,  
 a British Columbia Land Surveyor, make oath and say  
 that I was present at and did personally superintend  
 the survey represented by this plan and that the survey  
 and plan are correct. The said survey was completed  
 on the 17<sup>th</sup> day of July, 1973.

*[Signature]*  
 B.C.L.S.

Sworn before me this 19<sup>th</sup>  
 day of JULY, 1973

*[Signature]*  
 A Commissioner for taking Affidavits  
 for British Columbia.

Owner *[Signature]*  
 Witness *[Signature]*

Approved under the Land Registry Act  
 this 17<sup>th</sup> day of SEPTEMBER, 1973.

*[Signature]*  
 Approving Officer, Dept. of Highways.

This plan lies within the Fraser-Fort George  
 Regional District.