

RECEIVED

NOV 2 1973

CITY ASSESSOR
PRINCE GEORGE

PLAN N^o 21126

Deposited in the Land Registry
Office at Prince George, B.C. this
14th day of SEPTEMBER, 1973

E.T. SCHOOLLEY
Registrar

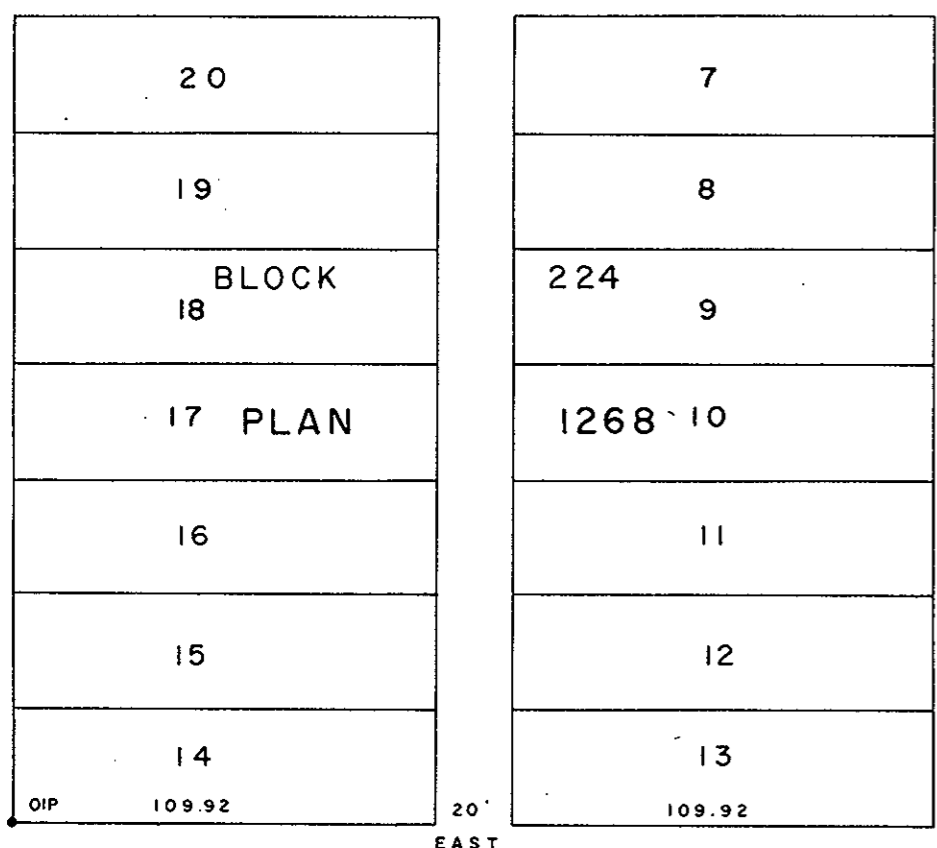
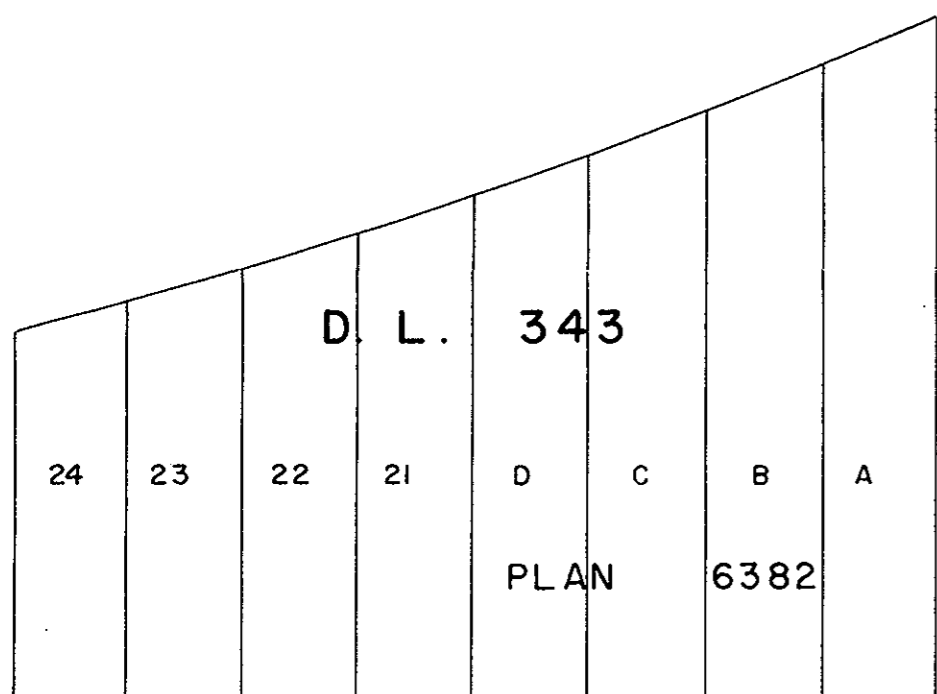
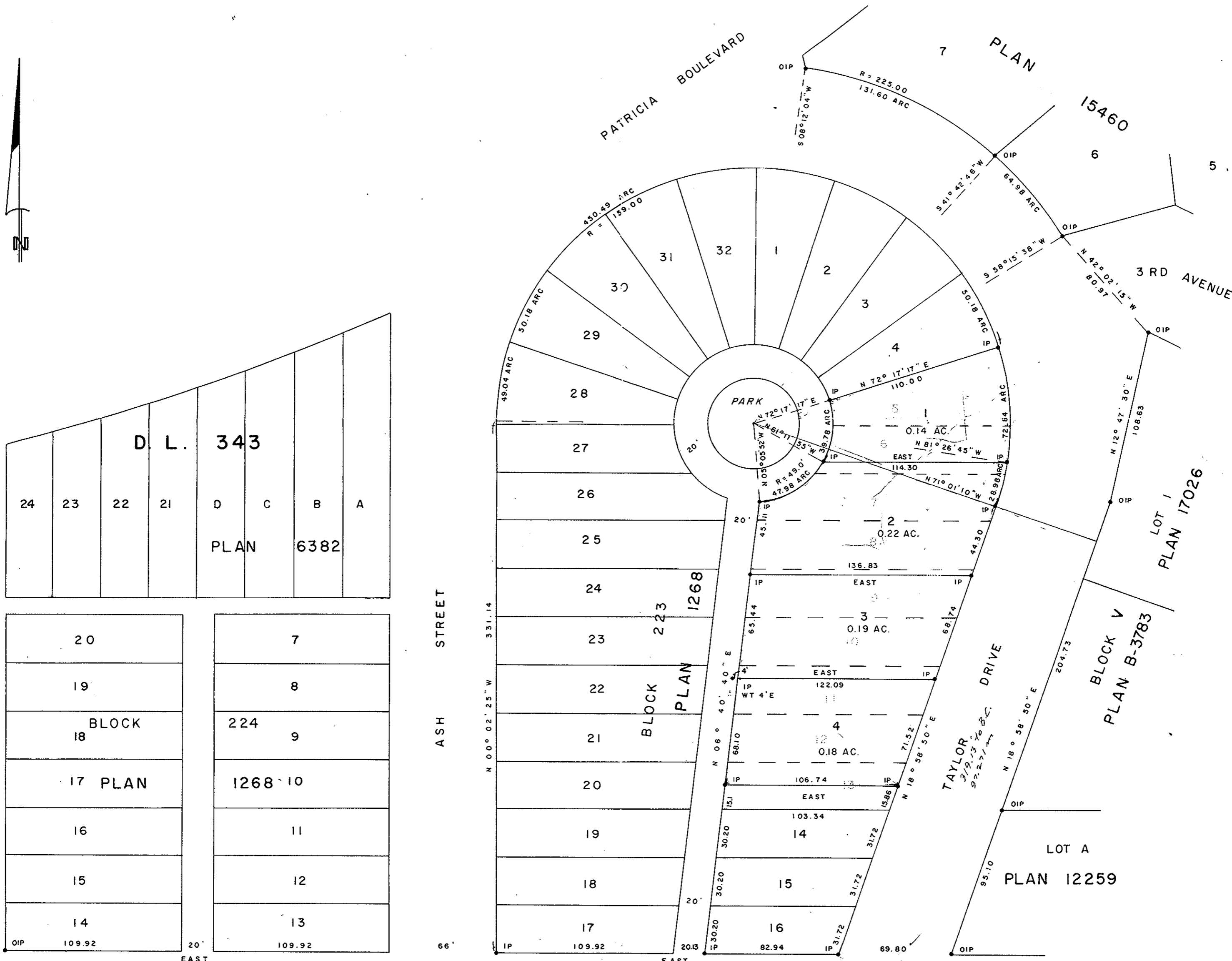
J. Finlayson
(SURVEYOR L.R.O.)

PLAN OF SUBDIVISION OF
LOTS 5- 12 INCLUSIVE, BLOCK 223, PLAN 1268 &
PART OF LOT 13, BLOCK 223, PLAN 1268
DISTRICT LOT 343
CARIBOO DISTRICT - BRITISH COLUMBIA

SCALE: 1" = 50'

NOTE: Bearings are astronomic, derived from the south
boundary of Blocks 223 & 224, Plan 1268.

LEGEND: • OIP denotes an old iron pin found.
• IP denotes an iron pin set.



I, DONALD A. DUFFY of the City of Prince George,
a British Columbia Land Surveyor, make oath and say
that I was present at and did personally superintend
the survey represented by this plan and that the survey
and plan are correct. The said survey was completed
on the 30th day of August, 1973.

[Signature]
B.C.L.S.

Sworn before me this 12th
day of SEPT, 1973

A Commissioner for taking Affidavits
for British Columbia.

15 TH AVENUE

Owner: *[Signature]*
(attorney)

Witness: *[Signature]*

Approved under the Land Registry Act
this 12th day of SEPT, 1973

[Signature]
Approving Officer, City of Prince George

This plan lies within the Fraser-Fort George
Regional District.

W. D. USHER & ASSOCIATES
LAND SURVEYORS
PRINCE GEORGE - B.C.
69 20-22 5402