

EXPLANATORY PLAN OF PART OF  
 LOT 6, PLAN 13428  
**DISTRICT LOT 2099**  
 CARIBOO DISTRICT - BRITISH COLUMBIA

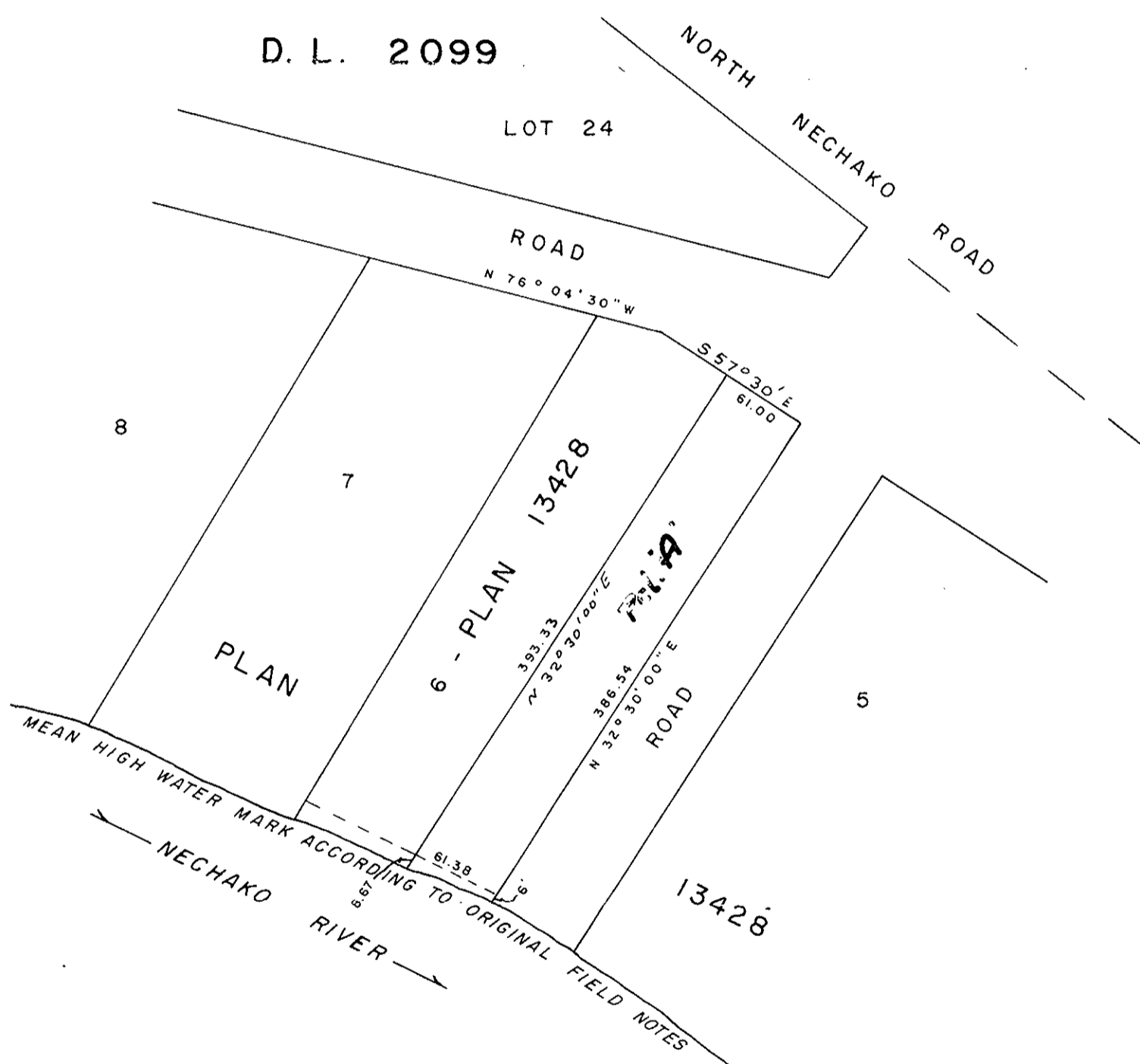
SCALE: 1" = 100'

**21104**

PLAN No. \_\_\_\_\_  
 Deposited in the Land Registry  
 Office at Prince George, B.C. this  
 \_\_\_ 31 \_\_\_ day of AUGUST, 1973.

E.T. SCHOOLEY  
 Registrar

Per: [Signature]  
 (SURVEYOR L.R.O.)



CERTIFIED CORRECT  
 According to measurements shown  
 on Plan 13428.  
 This 21 day of AUGUST, 1973.

[Signature]  
 D.A. DUFFY, B.C.L.S.

[Signature]  
 Owner L. Roberts

Witness Ralph G. Maida

This plan lies within the Fraser-Fort  
 George Regional District.

W. D. USHER & ASSOCIATES  
 LAND SURVEYORS  
 PRINCE GEORGE — B. C.  
 5497