

**PLAN No 21 101**

Deposited in the Land Registry Office at  
PRINCE GEORGE on the 26. day of AUGUST 1973.

E.T. SCHODLEY  
Registrar.

Per: *J. J. [Signature]*  
(surveyor L.R.O.)

**PLAN of RIGHT of WAY  
IN LOT 1, PLAN 10024,  
D.Ls 777 & 1430  
CARIBOO DISTRICT**

Scale : 1" = 40'

*I hereby certify that this is  
a true copy of the Official Plan  
on deposit in the Department of  
Lands, Forests, and Water Resources,  
and numbered 17 tube 583.*

*[Signature]*  
Acting Surveyor General  
Victoria B.C., August 21, 1973

PARCEL "Y"  
Plan 649

BOOK OF REFERENCE		
D. L.	R/W TAKEN FROM	AREA
777 & 1430	LOT 1, PLAN 10024	0.023 Ac.

- Bearings are astronomic and are derived from  
OIPs ON WEST BDY. PARCEL "Y", PLAN 649  
SHOWN AS N 0°00'55"E ON PLAN 17961.
- P.con. .... Standard Concrete Post.
  - P.Rock .... Standard Rock Post.
  - PP .... Standard Pipe Post.
  - I.P. .... Standard Iron Post.
  - P. .... Wooden Post.
  - L.P. .... Lead Plug.
  - .... Denoting "Old"
  - WT. .... Denoting "Witness"
  - CIP .... Capped Iron Post

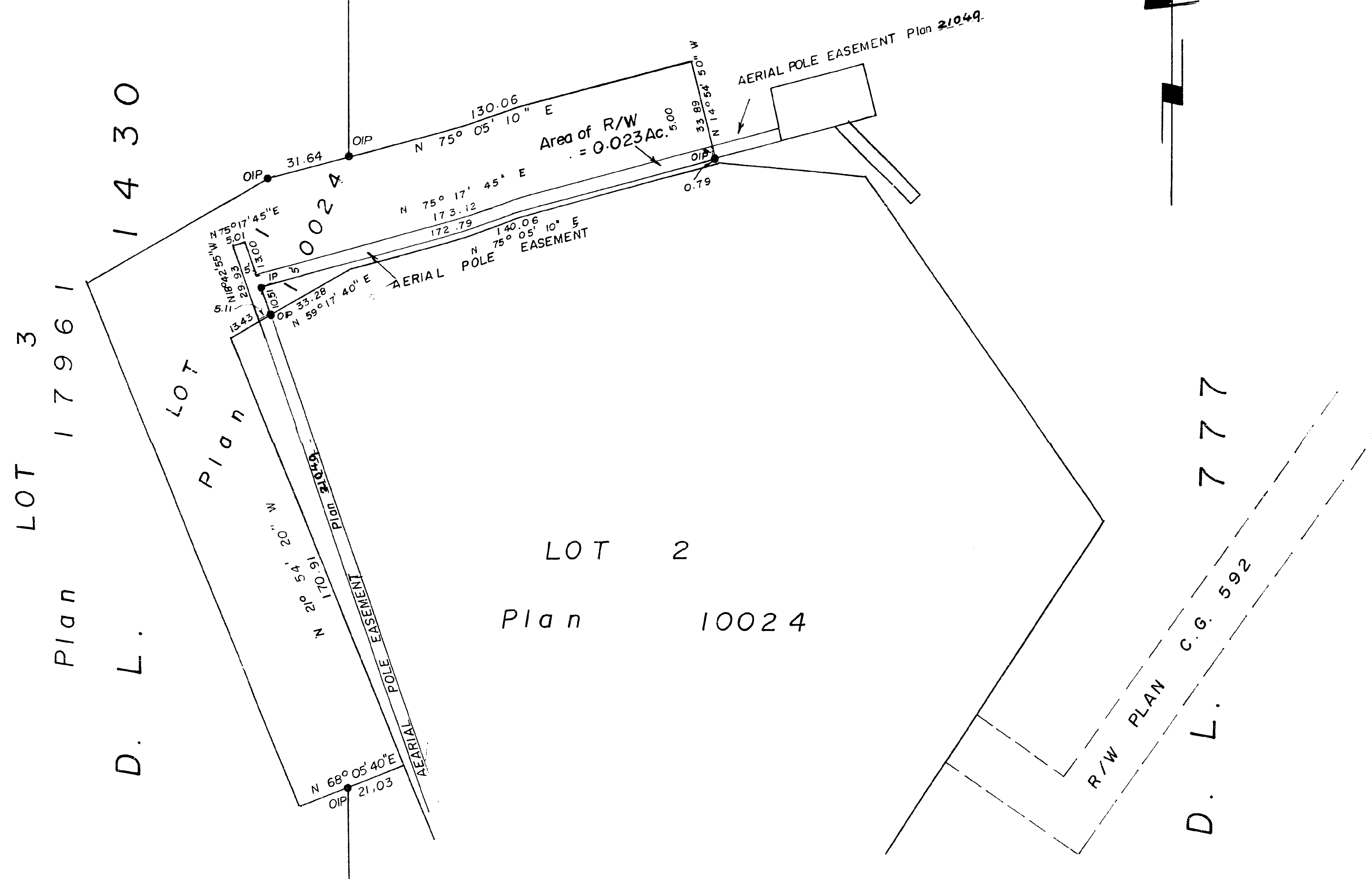
I, V. BARTELL of the CITY OF PRINCE GEORGE  
British Columbia Land Surveyor, make oath and  
say that I was present at and did personally  
superintend the survey represented by this  
plan and that the survey and plan are correct.  
The said survey was completed on  
the 17. day of MAY 1972.

*[Signature]*  
V. BARTELL, B.C.L.S.

Sworn before me at PRINCE GEORGE  
this 30. day of APRIL 1973.

*[Signature]*  
A commissioner for taking affidavits  
for British Columbia.

This plan lies within the FRASER  
FORT GEORGE Regional District.



McWilliam—Whyte—Goble & Associates  
B.C. LAND SURVEYORS  
PRINCE GEORGE | SMITHERS | KAMLOOPS  
REF N: 7119 D