

RECEIVED

SEP 24 1973

PLAN OF SUBDIVISION OF PART OF
LOT B, PLAN 16524
DISTRICT LOT 936
CARIBOO DISTRICT - BRITISH COLUMBIA

CITY ASSESSOR
PRINCE GEORGE

SCALE: 1" = 100'

PLAN N^o 21100

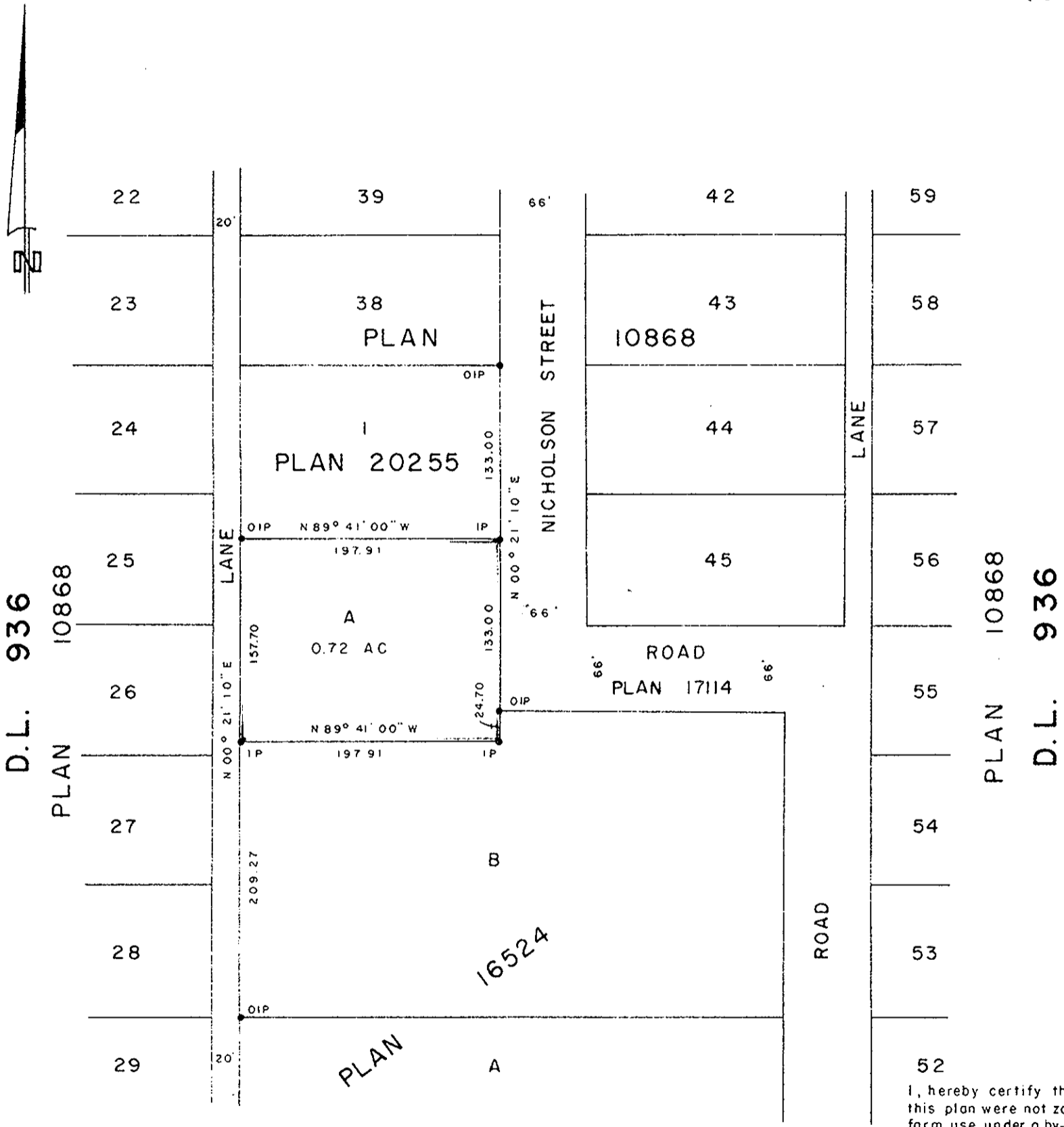
NOTE: Bearings are astronomic, derived from the West
boundary of Nicholson Street, as shown on Plan
20255.

Deposited in the Land Registry
Office at Prince George, B.C. this
27. day of AUGUST, 1973.

LEGEND: •OIP denotes an old iron pin found.
•IP denotes an iron pin set.

E.T. SCHOOLEY
Registrar

Per: *J. J. Simons*
(SURVEYOR L.R.O.)



I, hereby certify that the lands within
this plan were not zoned for agricultural or
farm use under a by-law, subsisting
immediately prior to the 21st of December, 1972,
of a municipality or regional district.

CROSS-ATLANTIC ENTERPRISES LTD.

C. E. Olet
Approving Officer, City of Prince George

I, DONALD A. DUFFY of the City of Prince George,
a British Columbia Land Surveyor, make oath and say
that I was present at and did personally superintend
the survey represented by this plan and that the survey
and plan are correct. The said survey was completed
on the 6th day of July, 1973.

Approved under the Land Registry Act
this 8th day of AUG. 1973

CITY OF PRINCE GEORGE

C. E. Olet
Approving Officer, City of Prince George

Sworn before me this 11
day of July 1973

W. Moffat
MAYOR

This plan lies within the Fraser-Fort George
Regional District.

A Commissioner for taking Affidavits
for British Columbia.

R. ...
CITY CLERK

W. D. USHER & ASSOCIATES
LAND SURVEYORS
PRINCE GEORGE - B.C.
FY 14 5306