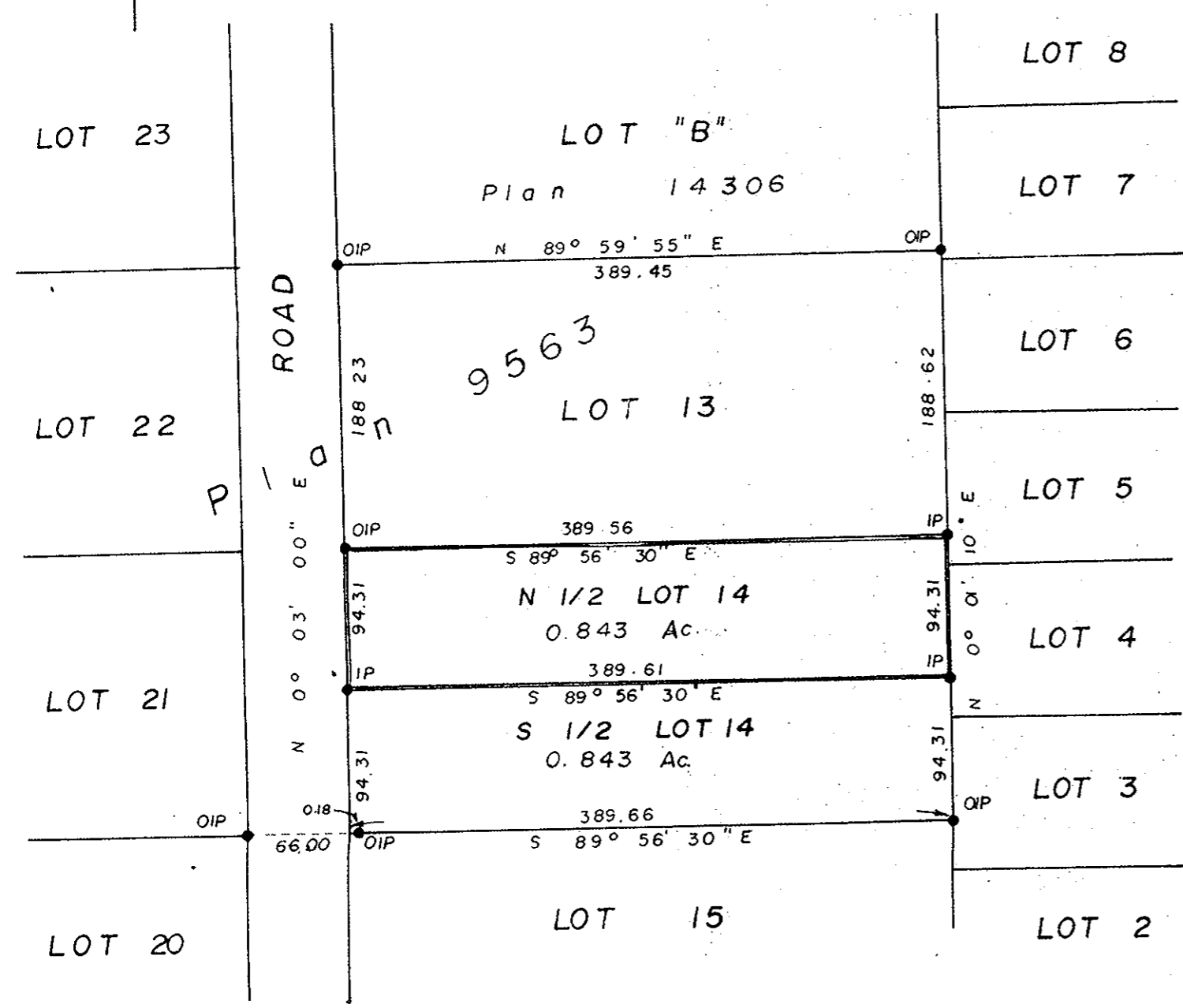
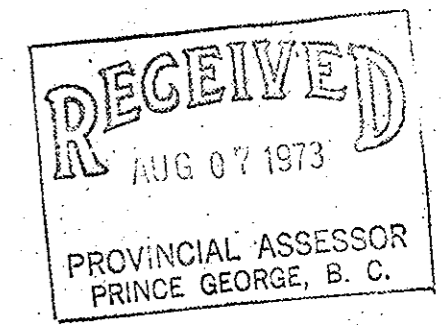


REFERENCE PLAN  
(Pursuant to section 106A of  
the Land Registry Act.)  
OF THE N. 1/2 OF LOT 14  
PLAN 9563, D. L. 2424  
CARIBOO DISTRICT  
Scale: 1" = 100'

PLAN NO.: 21061  
Deposited in the Land Registry Office at  
Prince George on the 23 day of JULY 1973.

E.T. SCHOOLEY  
Registrar



Bearings are astronomic, derived from  
OIPs on N.W. Corner Lot 13 &  
S.E. Corner Lot 21, shown as  
N 0° 03' 00" E on Plan 9563.  
● IP Standard Iron Post  
○ Denoting "Old"

I, V. BARTELL, of the City of Prince George  
British Columbia Land Surveyor, make oath  
and say that I was present at and did personally  
superintend the survey represented by this  
plan and that the survey and plan are  
correct.  
The said survey was completed on  
the 13th day of April 1973.

*Victor Bartell*  
V. BARTELL, B.C.L.S.

Sworn before me at Prince George  
this 16 day of April 1973.

Owner: *Haber B. Herrmann*  
*A. Wilson*  
A commissioner for taking affidavits  
for British Columbia.

Witness: \_\_\_\_\_

THIS PLAN LIES WITHIN THE FRASER-  
FORT GEORGE REGIONAL DISTRICT.

Mc WILLIAM, WHYTE, GOBLE & ASSOCIATES  
B. C. LAND SURVEYORS  
PRINCE GEORGE - KAMLOOPS - SMITHERS  
REF. NO.: 73086